

United States Department of the Interior
 National Park Service

National Register of Historic Places Registration Form

This form is for use in nominating or requesting determinations for individual properties and districts. See instructions in National Register Bulletin, *How to Complete the National Register of Historic Places Registration Form*. If any item does not apply to the property being documented, enter "N/A" for "not applicable." For functions, architectural classification, materials, and areas of significance, enter only categories and subcategories from the instructions.

1. Name of Property

Historic name: Shoshone County Poor Farm
 Other names/site number: Shoshone County Infirmary; Veteran's Memorial Hall
 Name of related multiple property listing: Metal Mining in Idaho (1860-1977)

2. Location

Street & number: 99, 179, and 224 Satherfield Road
 City or town: Silverton State: ID County: Shoshone
 Not For Publication: N/A Vicinity: N/A

3. State/Federal Agency Certification

As the designated authority under the National Historic Preservation Act, as amended,
 I hereby certify that this X nomination request for determination of eligibility meets
 the documentation standards for registering properties in the National Register of Historic
 Places and meets the procedural and professional requirements set forth in 36 CFR Part 60.
 In my opinion, the property X meets does not meet the National Register Criteria.
 I recommend that this property be considered significant at the following level(s) of
 significance:

 national statewide X local
 Applicable National Register Criteria:
X A B X C D

Signature of certifying official/Title: <u>Idaho State Historic Preservation Office</u> State or Federal agency/bureau or Tribal Government	Date
---	------

In my opinion, the property <u> </u> meets <u> </u> does not meet the National Register criteria.	
Signature of commenting official:	Date
Title:	State or Federal agency/bureau or Tribal Government

Shoshone County Poor Farm
Name of Property

Shoshone, Idaho
County and State

4. National Park Service Certification

I hereby certify that this property is:

- entered in the National Register
- determined eligible for the National Register
- determined not eligible for the National Register
- removed from the National Register
- other (explain:) _____

Signature of the Keeper

Date of Action

5. Classification

Ownership of Property

(Check as many boxes as apply.)

- Private:
- Public – Local
- Public – State
- Public – Federal

Category of Property

(Check only **one** box.)

- Building(s)
- District
- Site
- Structure
- Object

Shoshone County Poor Farm
Name of Property

Shoshone, Idaho
County and State

Number of Resources within Property

(Do not include previously listed resources in the count)

Contributing	Noncontributing	
<u>2</u>	<u>4</u>	buildings
<u> </u>	<u> </u>	sites
<u> </u>	<u>7</u>	structures
<u> </u>	<u> </u>	objects
<u>2</u>	<u>11</u>	Total

Number of contributing resources previously listed in the National Register 0

6. Function or Use

Historic Functions

(Enter categories from instructions.)

Domestic/Institutional Housing

Healthcare/Sanitarium

Social/Meeting Hall

School

Current Functions

(Enter categories from instructions.)

Domestic/Hotel

Domestic/Single dwelling

Architectural Classification

(Enter categories from instructions.)

Late 19th and Early 20th Century American Movements

Other: Institutional Craftsman

Materials: (enter categories from instructions.)

Principal exterior materials of the property:

Foundation: Concrete

Walls: Brick, Wood Shingles

Roof: Asphalt, Steel

Other: Cornice molding: wood

Other: Decorative roof brackets: wood

Other: Balustrade: wood

Other: Chimneys: brick

Shoshone County Poor Farm
Name of Property

Shoshone, Idaho
County and State

7. Description

Narrative Description

(Describe the historic and current physical appearance and condition of the property. Describe contributing and noncontributing resources if applicable. Begin with a **summary paragraph** that briefly describes the general characteristics of the property, such as its location, type, style, method of construction, setting, size, and significant features. Indicate whether the property has historic integrity.)

Summary Paragraph

The Shoshone County Poor Farm is located on Satherfield Road in the township of Silverton, Idaho, in a semi-rural setting west of a residential area. At the time of survey (2024-2025), there were three extant historic-period resources and ten non-historic-period resources on three parcels. Two largest buildings, the Infirmary (resource 1) and Isolation Hospital (later Memorial Hall, resource 3), contribute to the historic significance of the property. The third historic-period resource, the Steam Plant (resource 2), is noncontributing due to a loss of integrity. Additional resources on the parcels of the former Poor Farm include several manufactured outbuildings and structures added between 2021 and 2025, a two-story garage built in 2012 near Memorial Hall, a series of split-rail fences built circa 2012, and a cyclone fence of undetermined date.

The red brick Infirmary (resource 1) consists of the original, three-story, 1917 massing; a 1934, two-story addition atop the original, one-story, north wing; and a 1964, two-story addition extending east from the eastern end (distinct from the original). The building is of masonry construction, clad in red brick with a raised concrete foundation. The building is distinguished by a wide, flat-roofed front porch with wood balustrade, a clipped gable roof with three clipped gable wall dormers, and a centered, clipped gable cupola (Photos 6 and 7). The 1964 wing is clad in red brick with a flat roof, extends 68' from the eastern end, and is 40 feet wide (Photo 10).

The Poor Farm's original Steam Plant (resource 2) stands northwest of the Infirmary and southeast of Memorial Hall. This front-gabled, red brick building with attached covered access ramp has been heavily altered since its original construction in 1917 (see Figures 17 and 19 and Photo 33).

The former Isolation Hospital, now called the Veteran's Memorial Hall (hereafter Memorial Hall, resource 3), is a one-story, T-shaped building with a large central dormer and a partial daylight basement (Photo 24). Also completed in 1917, this building features the same clipped, side-gabled roof as the Infirmary, with a large, central, clipped gable dormer and five hip-roofed cupola vents on the primary ridgeline. The building is clad in red brick with wood shingles on the large central dormer. A one-story, red-brick rear addition with a flat roof extends north from the center of the north elevation.

Both the Infirmary and Memorial Hall feature Craftsman design characteristics in an institutional setting. These buildings meet the criteria for listing established in the Multiple Property Documentation (MPD) Metal Mining in Idaho (1860–1977), representing an early twentieth-century, government-established facility (hospital, isolation hospital, poor farm, infirmary, social

Shoshone County Poor Farm
Name of Property

Shoshone, Idaho
County and State

hall, and school) that provided care for the poor, sick, and indigent residents of the county. Despite some alterations, contributing buildings of the Shoshone County Poor Farm retain aspects of integrity and convey their original period of construction, design characteristics, and significant functions over time.

Narrative Description

Location and Setting

The Shoshone County Poor Farm lies near the eastern end of Shoshone County's Silver Valley, which follows the South Fork of the Coeur d'Alene River across the northern Idaho panhandle between Coeur d'Alene and Lookout Pass on the Idaho–Montana border. The surviving Poor Farm buildings are located west of Silverton, a small, semi-rural, unincorporated community surrounded by forested mountains and situated 1 mile west of Wallace and 3 miles east of Osburn along Interstate 90 (see Figure 2).

Although the Poor Farm property encompassed 45 acres upon its founding, much of the land was sold and redeveloped over the course of the twentieth century. The land formerly designated for the Poor Farm now includes a football field and running track southwest of the primary buildings, a helipad, a baseball field, Wallace School District 393 Offices, several storage facilities, two single-family houses, a small-scale medical facility and several lots of open land. The remaining buildings representing the original Poor Farm are situated on three contiguous parcels totaling 4.69 acres, east of the main residential area of Silverton (Figure 3).

The Infirmary (resource 1) is located at the northwestern end of Satherfield Road, facing the grassy expanse of Silverton Park to the south (Photo 1). A lawn defined by cultivated hedges and an arched wood trellis divides the building from a paved parking lot, with a gravel path leading up to its expansive front porch. Two large, mature trees define the southwestern and southeastern corners of the property. A storage unit complex adjoins the property to the west (Photo 2). A galvanized-steel chicken coop (resource 13) defines the northwestern portion of the Infirmary parcel. A house and small-scale medical care facility occupy land to the northwest that was part of the original 45 acres but later sold and redeveloped.

The original Poor Farm Steam Plant (resource 2) lies directly northwest of the infirmary and southeast of Memorial Hall and its garage (Photo 4). Two metal pole barns (resources 11 and 12) and two split-rail fences define the northwestern and eastern edges of this parcel (resource 9).

Memorial Hall (resource 3) sits northwest of the Infirmary. The facade of the building faces south and is set back from Satherfield Road by a large grassy expanse. A 20-foot-wide paved drive leads north from Satherfield Road to the east entry doors; it continues as a graveled drive around the building and back to Satherfield Road (Figure 2). A small stream runs along the northern and western sides of the drive. A two-story garage/storage building (resource 4) is located to the northwest (Figure 2). On the northeastern side of this garage rests a former 10,000-gallon steel oil tank (resource 5) that was originally belowground and used to supply the Poor Farm's steam boiler that heated the building. The tank was moved aboveground due to environmental concerns; the parcel owner eventually removed the ends and now uses the tank for storing wood. An arched, galvanized-steel-frame structure covered in canvas (resource 6) stands

Shoshone County Poor Farm

Shoshone, Idaho

Name of Property

County and State

north of Memorial Hall, and an aluminum-frame vehicle shelter (resource 7) sits northeast of the 2012 garage (Photo 5). Both structures were added in 2025. A cyclone fence (resource 10, Photo 64) runs south from the southeastern corner of the building and then west along Satherfield Road. The parcel's eastern boundary and a portion of the southern boundary are defined by wood, split-rail fences (resource 8, Photo 74), built circa 2012.

Additional buildings and structures on the site, all built after the period of significance and considered non-contributing to the nomination, include a two-story, gable-roofed garage (resource 4) built in 2012; a decommissioned oil tank (resource 5) which has been modified for wood storage and moved from its original location; a canvas-covered arched storage structure (resource 6); an aluminum vehicle shelter (resource 7); several non-original split-rail fences (resources 8 and 9); a cyclone fence (resource 10); two metal pole barn buildings (resources 11 and 12); and a galvanized-steel chicken coop (resource 13).

Resources

Resource 1 Infirmery (1917) Contributing

Exterior

The Shoshone County Poor Farm Infirmery, built in 1917, is a three-story building constructed of red brick with a distinctive, clipped gable roof with three clipped gable wall dormers. A broad, flat-roofed front porch distinguishes the main entryway to the building, which faces a wide front lawn with mature trees and a border hedge (Photo 6).¹

The Infirmery has a footprint of approximately 6,835 square feet with a T-shaped floor plan. The primary east–west wing is 100 feet long and 40 feet wide, and the north–south wing extends 77 feet north from the center of the east–west wing. It widens from a short, 28 feet-wide connecting wing (called the hyphen) to 42 feet, then to 47 feet at the northern end. The 1964 addition, which contains patient rooms, extends 68 feet from the eastern end of the 1917 east–west wing.

Primary Facade (South Elevation)

The primary facade of the 1917 building, facing south and set well back from Satherfield Road, is divided symmetrically into nine bays. Two stories of red brick support the predominant visual feature of the building: the asphalt-composition-shingled, clipped gable roof with three dormers spaced evenly across the facade on the third story. Clipped gable roofs with broad overhanging eaves supported by braced timber brackets top the dormers extending from the main roof (Photo

¹ Jim Kolva, "Historic Preservation Certification Application Part 1 – Evaluation of Significance: Shoshone County Infirmery and Isolation Hospital," National Park Service, U.S. Department of the Interior, received August 5, 2008. Kolva's description provides a foundation for the Infirmery description with editing and additions for clarity and updates on the building's historic integrity and condition in 2025.

Shoshone County Poor Farm

Shoshone, Idaho

Name of Property

County and State

6). Above the center bay is a square, shingled cupola topped by a compound, clipped gable roof (Photo 13). A broad covered porch spans the entry.

The first floor is elevated about 4 feet above grade on a poured-concrete foundation. Red-brick walls, in stretcher bond, rise from a brick soldier course at the top of the concrete basement to the bottom of the overhanging roof eaves and deck. The primary facade is divided into nine bays with a centered entry bay flanked by four window bays. The entry bay consists of a non-historic, anodized aluminum-frame assembly with double glass-panel doors, sidelights, and a single-light glass transom. Flanking each side of the door, in a single opening, is a pair of wood-frame, double-hung, sash windows, separated by a 4 inch, flat, wood mullion. The windows west of the main entry are the original, six-over-six-light sashes, but those east of the entry have been replaced with wood-frame, one-over-one sashes. The windows are set in a flat brick wall and inset about 2 inches from the wall plane. Brick headers extending one brick beyond the jambs form the sills. A flat steel bar forms the lintel. The remaining five window openings are double-hung, wood sashes with eight-over-eight lights. Natural aluminum-frame storm windows are fixed outside the wood sash (Photo 14).

The dominant feature of the first story is the broad covered porch, which projects about 13 feet forward off the facade plane and spans approximately 55 feet to cover the entry and the third through seventh bays (Photo 14). The brick-faced porch platform is divided into three sections, with the brick bulkhead walls flanking the centered concrete steps and buttresses. Four rectangular brick piers rise to a plywood-faced, 12 feet-deep, 8 feet-wide, wood beam to support the flat, horizontal roof deck. Between the piers flanking the entry steps are wood balustrades with turned spindles and a molded rail (painted white). The corner piers, set slightly forward of the porch plane, rest on concrete pads, while the piers framing the steps rise from the porch's concrete floor. The corner piers have 24-inch exterior faces, with 16-inch interior faces to form a notch on the interior corner (coincident with the directions of the beams). Resting atop the piers, the corners of the longitudinal and lateral beams are inset about 4 inches from the exterior faces of the supporting piers. The 10-inch-thick wood roof deck projects about 12 inches beyond the piers. Sheet metal flashing covers the top edge of the deck. Flat brick pilasters project from the wall to support the lateral beams of the deck structure. The pier flares in a corbel to a wood-trimmed cap to engage the beam. There is physical evidence of the railing that was, historically, atop the porch roof to form an open deck (Figures 15 and 16). At the inside corners of the porch deck, there is a shallow hole in the brick wall, at which point a railing would have been anchored. The railing is no longer extant.

The arrangement of the second-floor facade is similar to the first floor, with a slightly different configuration of the bays. The window bays feature eight-over-eight, double-hung, wood-sash windows with aluminum storm coverings. The center bay has wood-frame, eight-light, French doors, which have replaced the original doors. Sidelights flank the door opening, consisting of a lower wood panel and three upper glass lights. Above these doors, a nine-light transom has seven lights over the door opening and one each above the sidelights.

The third floor is defined by the side-gabled roof and clipped gable wall dormers with supporting braced timber brackets (described above). Within each dormer, two wood-frame, six-over-six, double-hung windows sit atop a sill line of header bricks set with trapezoidal concrete corner blocks at either end. Aluminum-frame storm windows cover the original sash. Above the center

Shoshone County Poor Farm

Shoshone, Idaho

Name of Property

County and State

dormer at the ridgeline of the roof rises a square, shingled cupola with clipped gable roof. The cupola base, slightly concave, begins at the top of the dormer and rises to the ridgeline, at which point the eave brackets extend from a horizontal molding to the roof eaves. Each of the cupola's four faces includes two louvered sections that provide attic ventilation (Photo 13).

The 1964 addition, which is the same width as the original building but only two stories in height, extends the east wing 68 feet beyond the original massing (Photo 12). The facade of this addition consists of a flat brick wall with five window bays and a flat roof with overhanging concrete deck. The window bays feature new, one-over-one, aluminum-frame, double-hung windows with uniform lintel heights, with the exception of the third window bay, which includes two smaller, one-over-one, aluminum-frame windows. All the windows feature header bond brick sills.

West Elevation

The west elevation includes the western end of the 1917 building and the north wing with the 1934, two-story addition (Photos 7 and 8). The partial daylight basement framed in concrete is visible at the base of this elevation, topped by a brick soldier course and an expanse of brick laid in running bond rising to the overhanging eaves of the clipped gable roof. The first floor has a wide wood door frame infilled with a single sidelight and contemporary metal door, which replaced the original wood double doors with six-light glazing and eight-light transoms, possibly when the building was upgraded in 1964. This replacement door at ground level is flanked on the southern side by a small, six-over-six, wood-frame, double-hung window with an aluminum-frame storm window. Similar doors are located on the second and third floors, with two, six-over-six, wood-frame, double-hung windows flanking the door on the third floor. A metal fire escape provides access to each level from the exterior and is attached to the building with steel struts. Four angled wood brackets support the overhanging eaves of the roof. With the exception of the new doors, this arrangement of openings reflects the original design depicted in images of the building from 1917 (Figures 15 and 16).

The west elevation of the north wing depicts some of the changes the building has undergone over time. A narrow hyphen attaches the east-west wing to the north wing. The hyphen originally rose only one story atop the concrete basement, housing the kitchen and dining room for the original Infirmary (Photo 8). In 1934, two additional floors were added to create more patient rooms. These second two stories took the form of a dormered, side-gabled building similar to the 1917 massing. The hyphen is 32 feet wide and has a lower roofline. The wood-frame, double-hung windows vary from a centered, eight-over-eight-light window on the first floor to narrower six-over-six and four-over-four sash windows at the second and third levels. A single dormer in this section is smaller (with one window bay) than the two dormers of the main section (with two windows each).

Projecting 5 feet west from the hyphen, the north wing is the same height as the main east-west wing with clipped gables at each end. Four one-over-one windows are in the first-floor dining room. An original recessed loading dock adjoins the southern portion of the kitchen. The second story features six window bays, each with six-over-six-light sashes. Two dormers, identical to those of the front facade, distinguish the third story. At the northern end of the loading dock, the building jogs out about 2 feet to accommodate a stairwell and storage on the western side and storage room on the eastern side. A single, wood-frame, half-glazed door topped with a nine-

Shoshone County Poor Farm

Shoshone, Idaho

Name of Property

County and State

light window defines the northern end of the east elevation, with a window opening infilled with wood board and an air conditioning unit immediately adjacent. The loading dock is accessed by a short flight of concrete stairs (Photo 8).

North Elevation

The north elevation of the north wing is clad in brick with a concrete foundation. A large brick chimney rises at the center of the elevation, flanked by double-hung, wood-sash windows at each of its three stories. The first-floor windows are one-over-one replacements, while the second and third stories include eight-over-eight- or six-over-six-light sashes. A one-story, shed-roofed addition built of concrete masonry units (CMU) extends from the northeastern corner of the north wing. This addition was possibly added in 1969. It has four fixed windows in the north elevation: two square and two narrow, vertical, rectangular casements. The roof is clad in ribbed metal and includes HVAC ducts and pipes emerging from the rooftop (Photo 9).

East Elevation

The east elevation of the north wing is very similar to the west elevation, with the distinction of the shed-roofed, CMU addition at the northeastern corner (Photo 10). The east elevation of the CMU addition has two windows, one of which is secured with metal bars. The addition attaches to the main massing near a loading dock, similar to that on the west elevation. Other differences include a metal door infilling the third-floor dormer window opening nearest the northern end of the east elevation, which provides access to an external metal fire escape. A window opening on the second floor is also infilled with a newer metal door that accesses this fire escape. There is also a wood-panel door with six lights at the northern end of the loading dock. All other details of this elevation (window and cladding materials, roof lines, and general dimensions) reflect that of the west elevation.

The east elevation of the east-west wing is distinguished by the two-story addition built in 1964, which is clad in brick with a flat roof. This elevation has no windows, and is accessed by a centered, double-leaf, metal door with centered glazing on the first floor. A flat-roofed canopy is mounted on steel poles above this entry. On the second floor, a similar double-leaf, center-glazed door accesses a metal fire escape that extends from the rooftop of the building to ground level. The roof of the 1964 addition has a steel-pipe safety railing at its perimeter (Photos 11 and 12).

Interior

The interior of the Infirmary reflects the original institutional character of the building overlaid with the ongoing renovations undertaken by the current owner. Each of the floors contains approximately 6,835 square feet; the first floor contains twenty former hospital rooms, storage rooms, bathrooms, closets, offices, an elevator, a large dining room, a prep kitchen, and a cooking kitchen with a walk-in refrigerator and pantry storage room. On the second floor there are thirty-two former hospital rooms and offices, bathrooms, storage rooms, and closets. Several of the first-floor hospital or office rooms have been rehabilitated into hotel guest rooms and modern staff offices and workrooms. Work continues in the rehabilitation of additional guest rooms on the first and second floors, and various projects were underway on the third floor and in the basement when the building was surveyed in 2024 and 2025. The interior has few original ornamental details except for wood balustrades, handrails, trim, and treads in the stairwells; some original wood doors; and the original wood floors, which have been refinished on the first floor.

Shoshone County Poor Farm

Shoshone, Idaho

Name of Property

County and State

Rehabilitation of some of the floors on the second and third floors has started but is not complete. Most of the windows in the 1917 portion of the building are original, multi-light, wood-sash windows in a double-hung configuration, while most of the windows in the 1964 portion are new, dual-glazed, single-hung, aluminum sashes. Some original bathroom fixtures from 1917 and 1964 are present throughout the building. Most of the light fixtures are modern replacements, except for on the third floor, where several fluorescent ceiling fixtures remain.

The first floor has a centered entry vestibule with a furnished seating area on the eastern side of the hall (Photo 15). This vestibule opens onto a central hall with the dining room (Photos 18 and 19) and kitchen extending in a hallway to the north, and guest rooms in the east and west wings, where the process of renovation becomes more apparent (Photo 16). An Otis elevator occupies the corner of the hallway northwest of the entry vestibule (Photo 20), possibly added in the 1930s. Restrooms are positioned at the ends of the east and west wings of the original Infirmary massing and retain the original sinks, tubs, and wood stall doors, as well as original windows. Former offices have been converted into hotel guest rooms on the first floor. The rehabilitated bathroom in this addition features the tub, floor tile, and toilet from 1964. The north wing includes the 1917 dining room (Photos 18 and 19) with the kitchen beyond. The kitchen was likely remodeled when the second-floor addition was built in 1938. Remaining fixtures, such as the walk-in refrigerator, pantry, and flooring, appear to date to the 1938 period (Photos 21–24). Wood stairways with solid wood-panel balustrades and wood handrails extend from the first to third floors at the eastern and western ends of the building (Photo 25).

The second floor has the same layout as the first, with patient rooms above the kitchen and dining area in the north wing. Alterations, including bathroom fixtures, date to the 1940s through the 1960s, when the building was expanded (second-floor addition in 1938 and east wing in 1964). The east–west hallways are lined with patient rooms as well (Photos 26 and 27), and the north–south hallway terminates in double doors (replaced), which provided access to the deck above the main entry porch (Photo 28). There are restrooms in the hyphen between the east–west and north wings. Fixtures in these restrooms date to the 1960s.

On the third floor, the western stairway enters a living room, which connects to a small kitchen with interior rooms beyond. The eastern stairway accesses an L-shaped hallway opening to the roof deck of the 1964 addition, with a central north–south corridor providing access to the north wing. The northern hallway ends at a perpendicular hallway, providing access to private rooms and an exit door at the eastern end. The slope of the roof has reduced the floor area of the third floor. Since the 2008 survey, the current property owners cleaned out debris and garbage, repaired numerous panes of broken window glass, and pulled up some carpeting to assess the wood floors underneath, but made no other changes to this floor.

A concrete basement lies under the original T-shaped building and the 1964 addition. Concrete stairs, including a concrete handrail, access the basement from the first floor at the northwestern end of the kitchen wing (Photo 30). The basement retains its original Ideal brand furnace (Photo 31), cold storage rooms lined with wood shelves (Photo 32), and evidence of laundry facilities, including steel rails inlaid in the concrete floors (Photo 29). The area under the 1964 wing is used for storage.

Shoshone County Poor Farm

Shoshone, Idaho
County and State

Name of Property

Resource 2
Steam Plant (1917)
Noncontributing

Exterior

The former Steam Plant for the Shoshone County Poor Farm, which supplied steam heat to the Infirmary and housed the facility's laundry, is situated southeast of Memorial Hall and northwest of the Infirmary. The building occupies a footprint roughly 44 by 44 feet with a covered walkway that extends approximately 30 feet northeast off the north elevation (Photo 33). Built on a poured-concrete foundation, the building is of masonry construction and clad in red brick laid in running bond with a brick soldier course where the brick cladding meets the concrete foundation. A corbeled brick cornice flares out gently to meet the front-gabled roof, added in the mid-twentieth century, which is completed with red corrugated-metal panels on the roof and in the gable ends. A wood-frame awning clad in red corrugated-metal roofing extends off the east elevation, covering an access ramp that slopes upward along the building from north to south.

North Elevation (Primary Facade)

The north elevation once featured a large smokestack for the Steam Plant, but that element was removed between 1939 and 1948, leaving a vertical channel of newer brick in the center of the elevation (Photo 38). A new gable roof tops the brick walls of this elevation and features corrugated-metal paneling in the gable end. The north elevation originally included four window openings topped with segmental arch lintels and featuring multi-light, wood-sash windows. All four of these openings have been infilled with concrete. The opening at the northwestern corner has a one-over-one, vinyl-sash window set into the concrete infill; a concrete opening in the channel of the old smokestack has a one-over-one, vinyl-frame window; and the second opening from the northeastern corner, also infilled with concrete, has a fiberglass paneled door. A wood-frame deck with horizontal wood railings is topped by a sloping, wood-frame, corrugated-metal roof that extends out from the north elevation in front of this door, joining the covered walkway and ramp on the east elevation via a wood staircase. The east elevation ramp extends north from the north elevation and turns at a right angle toward the west in front of the north elevation (Photo 38). This portion of the walkway is covered with a gable roof clad in red corrugated metal. The entire covered walkway and ramps are later additions to the building.

East Elevation

The east elevation has five window openings with segmental arch windows and brick lintels and sills similar to the other elevations. All five openings have been infilled with concrete. The opening nearest the northeastern corner has a one-over-one, vinyl-frame window, as do the two center window openings. A sloping wood ramp with horizontal wood railings and a wood-frame awning covered in corrugated metal rises from a lower grade level at the northern end of the building to the hillside grade on the southern end. The top of the ramp is supported by a poured-concrete pier (Photos 34 and 35).

South Elevation

The original facade of the building was in the south elevation and featured two segmental arched openings, each with three rows of corbeled soldier bricks across the lintel with brick keystones centered on each arch. Within each of these openings were wood double doors, each with

Shoshone County Poor Farm

Shoshone, Idaho

Name of Property

County and State

twelve-light fixed windows above a large, recessed, wood panel with applied cross bracing. The doors were hung on large iron hinges, swinging out to provide access to the interior boilers. Between these larger openings was an entry door topped with a four-light fixed transom. The door also had a fixed, twelve-light window above a recessed wood panel with cross bracing and was topped with the same segmental arch lintel with three rows of corbeled soldier bricks with a brick keystone (Figure 17). The entire elevation, save for the corbeled brick cornice, has been covered in smooth concrete. No original openings remain; a single wood entry door with a single fixed window and aluminum screen door is centered in the eastern third of the elevation, and the original larger entryway has been infilled around it. A fixed, plate-glass window defines the center of the elevation, and on the western end, a wood-frame window with a wide, fixed central pane framed by one-over-one wood sash windows at either end has replaced the original larger opening (Photo 36). A grass-covered hill descends gently from this elevation toward a paved concrete pathway between the Steam Plant and an adjacent storage facility (not part of this parcel).

West Elevation

The west elevation is clad in the original brick and has three openings: a segmental arched wide window, infilled with concrete, and two narrower segmental arched window openings infilled with vinyl- or aluminum-frame one-over-one windows. The window toward the southwestern corner appears to have the original brick sill. The central window, once a tall, multi-light, sash window with a brick sill, has been infilled with plywood and a smaller, vinyl-frame window. Near the northwestern corner, a large doorway cuts through the concrete foundation, topped by a steel C-channel beam (Photo 37). The original multi-light wood doors have been replaced with solid wood double doors. A small concrete extension with a corrugated-metal roof defines the northeastern corner adjacent to the concrete path that extends west from the basement doors.

Interior

The interior of the Steam Plant building is functional, with few stylistic details. The building reflects alterations from its distinct periods of use, first as the Steam Plant building for the Poor Farm, then as a County health department office and women's crisis center, and finally as single-family housing (at the time of survey, the building is being used as a residence by the parcel owner). The building's main floor contains three bedrooms, a kitchen, a bathroom, an office, and a dining/living room, while the basement is divided into five spaces used for storage. Except for the kitchen, which has acoustic ceiling tiles, the main floor has smooth plaster ceilings. All the ceilings are trimmed with narrow cove crown molding. The interior walls are finished in smooth plaster, and the door and window openings are trimmed with simple wood casings. The main level has flush panel doors. Flooring is a mix of sheet vinyl and low-pile carpet. Each room has baseboard heaters, and light fixtures are a combination of ceiling-mounted fluorescent and incandescent types.

At the primary facade (north elevation), the main entry door opens into a U-shaped kitchen to the east and a short hallway to the south. The kitchen appears to date to ca. 1960. The kitchen has patterned sheet vinyl flooring (ca. 1970), red-orange Formica countertops, and painted wood cabinets with silver-colored saucer pulls. Lower cabinets line the eastern wall, with the sink centered under the window (Photo 42). Upper cabinets are present on the northern wall above the

Shoshone County Poor Farm

Shoshone, Idaho

Name of Property

County and State

stove and refrigerator, flanking the window on the eastern wall, and on a portion of the southern wall.

Down the hallway to the south, there is a bathroom off the hall to the east and a bedroom to the west; the hallway opens to a dining/living room space at the southern end of the building. In the bathroom is a porcelainized, cast-iron bathtub that appears to date to ca. 1960, with a shower surround of 4.25-inch, square, marbleized pink and black plastic (polystyrene) tiles, and a non-historic sink, toilet, and wall-mounted medicine cabinet. West across the hall from the bathroom is the primary bedroom, which contains a closet and a window in the north-facing wall. Just south of the bedroom door in the hallway is a doorway that opens into a utility closet.

At the end of the hallway to the east is an office, which has a walk-up window opening between the office and the dining/living room (Photo 40). A small entry vestibule is tucked into the southeastern corner of the building and contains a doorway in its northern wall that enters into the office, a doorway in its western wall that accesses the living room, and a doorway in its southern wall that contains the rear entry door to the building. The living room space is delineated into two spaces by an 18-inch-thick wall that extends from the room's southern wall about 4 feet into the room, defining a dining space on the eastern side and a living room space on the west (Photo 41). On the northern wall of the dining space is a built-in buffet constructed of stained wood, and in the northern wall of the living space is an opening to a hall that accesses the two additional bedrooms. Each bedroom has a single window and a closet.

At the basement level, most of the interior dividing walls are constructed of CMU. The basement is accessed only from outside the building through a large pair of wood doors in the west elevation. The doors slide open to give access to a room, which may have been the engine room of the Steam Plant, that runs about three-quarters of the length of the west elevation, with thick CMU walls on the eastern and southern sides. A nook in the northwestern corner holds the remnants of an equipment elevator, including a chain and gear drive system, which is currently used for storage (Photo 48). The ceiling in this portion of the basement is of wood-frame construction, indicative of the changes made to convert the building from a Steam Plant to office use.

A doorway is located at the northern end of the eastern CMU wall that accesses the eastern side of the basement. A partial-height, sand-filled, CMU wall faces the entryway, creating a barricaded entrance to the rest of the basement (Photo 46). The parcel owner believes that the partial wall is a blast wall, built as a nuclear fallout shelter in the basement.² Near the blast wall in the northern wall of the basement is an iron hatch imprinted with "Union Ironworks Spokane" (Photo 47), and high above the hatch is a bricked-in circular opening in the wall (Photo 45). There are three rooms that are accessed from the doorway, including a large room that may have been the boiler room for the Steam Plant that is used for storage. The northern, eastern, and southern walls and ceiling are of heavy, board-formed-concrete construction, with deep concrete beams atop thick concrete walls (Photo 44). At the southwestern corner of the room is an enclosed and covered CMU doorway that juts out into the room.

Through the doorway at the southeastern end of the building is the former coal room. All the walls of the coal room are of thick board-formed concrete construction. The concrete floor slopes

² Personal communication, LeRoy G. Wheeler, August 19, 2025.

Shoshone County Poor Farm

Shoshone, Idaho

Name of Property

County and State

down from the southeastern wall to the doorway. A window, the former coal hopper, is located high in the southeastern wall (Photo 43). The coal room is presently used for storage.

Directly west of the coal room, in the southwestern corner of the basement, is a small room outfitted with shelving and used for storage.

Resource 3

Isolation Hospital (Memorial Hall) (1917) Contributing

Exterior

Memorial Hall (the former Isolation Hospital), built in 1917, is a one-story, red-brick building, T-shaped in plan, with a partially raised concrete basement and a clipped, side-gabled roof with a large central dormer. The building measures 118 feet east–west and 45 feet north–south, with a 36 feet by 28 feet, one-story addition at the center of the north elevation. The building’s facade faces south and is set back from Satherfield Road by a large, grassy expanse.

Primary Facade (South Elevation)

The primary facade of Memorial Hall is on the south elevation. The poured-concrete daylight basement rises 6 feet above the ground surface. Two sets of two, six-over-six-light, wood-frame windows flank a flight of nine concrete entry stairs framed by concrete bulkheads. A brick soldier course marks the transition to the red-brick cladding of the main body of the building, which is laid in running bond. The facade is divided into eleven bays, ten of which contain a triplet of ten-light, wood-frame windows with two-light, wood-frame, storm windows attached to each exterior (Photo 49). The central bay, at the top of the concrete stairs, features the primary entry defined by a set of wood, two-panel doors with a six-light window in each door. A four-light, wood-frame transom spans the door frame between two, four-light sidelights. The bottom third of each sidelight is infilled with a painted wood panel. The sidelights are also enclosed by two-light, wood-frame, storm windows (Photo 50).

A painted wood cornice molding tops the brick cladding below the overhanging eaves of the roof. Centered above bays five through seven (the central entry door and flanking windows), a large, wood-shingled wall dormer breaks the eave line and is capped with a clipped gable roof supported by six braced-timber brackets. The dormer includes four centered, wood-frame, double-hung, six-over-six-light windows with two square, six-light, wood-frame windows, one on each side of the central four windows. The dormer and hip-on-side-gabled roof are clad in red ribbed panels, which have replaced the original cedar shake roof. Exposed rafter tails define the heavy overhanging eaves of the building. Along the ridgeline sit five wood-frame, hip-roofed, square, ventilation cupolas with wood-shingle cladding below louvered vents (Photo 47).

West Elevation

The west elevation of Memorial Hall includes a one-story addition, built in the 1930s by the Veterans of Foreign Wars (VFW) to house a kitchen, two small rooms, and restroom facilities. The west elevation of the original wing features 6 feet concrete stem walls, a small concrete porch with a metal railing fronting the single-entry door, and a small, wood-frame, asphalt-composition shingle-clad shed with a gable roof clad in ribbed-metal roofing (Photo 51). The

Shoshone County Poor Farm

Shoshone, Idaho

Name of Property

County and State

rear wing of the building extends 28 feet north and features concrete stem walls at the basement level with three window openings infilled with wood and metal roofing panels. A brick soldier course provides a base to the brick cladding laid in running bond on the main floor of the west elevation. The addition is topped with a wood cornice and flat roof. On this elevation are a wood-frame, double-hung, six-over-six-light window and a second larger window opening, which has been partially infilled with a smaller, vinyl-frame window with applied muntins. The remainder of this opening is infilled with brick. A wood-frame, two-panel, wood door with a fixed, six-light window provides an entry point at the top of the concrete stairs near the junction between the addition and the original massing (Photo 52).

North Elevation

The north elevation of the 1917 massing originally mirrored the facade (south elevation). The 1930s addition extends 28 feet north and 36 feet across the center of the 1917 north elevation, below the large central dormer. The addition is clad in brick, with three wood-frame, six-over-six-light, double-hung windows centered on the north elevation. Wood cornice molding separates the brick cladding from the slight overhang of the flat-roofed eaves. From the north, two brick chimneys are visible: one extending up from the northeastern edge of the large central dormer on the original massing, and a second, shorter chimney rising from the southwestern corner of the flat-roofed addition (Photo 53).

East Elevation

The east elevation of Memorial Hall includes the eastern side of the original massing and that of the north addition. Concrete stem walls measuring 4 feet high support a soldier course of red brick topped with a single story of brick laid in running bond. Three triplets of ten-light, wood-frame windows with two-light, wood-frame, storm windows define the primary expanse of the east elevation. There is a single wood-frame door with one small window near the top of the door and a wood-frame, single-light transom. The wood cornice molding spans the east elevation below the wood-shingled gable eave, which includes a vertical, rectangular, louvered vent at the center. The clipped gable roof is clad in ribbed metal and supported by braced-timber brackets supporting the exposed rafter tails of the overhanging roof eaves (Photo 54).

A small entry porch and enclosed extension was likely added sometime after 1954 to accommodate students with disabilities. It extends approximately 15 feet north and is framed by a brick pier supporting a shed-roofed extension over a small open porch with a makeshift ramp. Behind the porch, the addition is clad in red brick with a ten-light, wood-frame transom over a double-leaf, steel, entry door. A wood cornice molding that matches the original building extends under the eave of the low-sloped shed roof clad in ribbed metal. The east elevation of the 1930s-era addition extends farther north, with 4 feet concrete stem walls, two window wells, and three double-hung, six-over-six, wood-frame windows with brick sills. The addition is also clad in red brick and topped with a flat roof with a wood cornice molding below the slightly overhanging roof eaves (Photo 55).

Interior

The interior of Memorial Hall reflects alterations from its distinct periods of use, first as the Isolation Hospital for the Poor Farm; later, as a dance hall; and then as a mid- to late-twentieth-century school for children and adults with intellectual disabilities (the Opportunity School). The

Shoshone County Poor Farm

Shoshone, Idaho

Name of Property

County and State

building was most recently occupied as a single-family home. The interior has very few ornamental details except for cornices under the windows in the great hall's northern and southern ends where the ceiling rises to follow the clipped gable shape of the underside of the roof in the wall dormers. A similar cornice delineates the angled portion of the ceiling at the eastern and western ends of the great hall and encircles the wall-ceiling junction in the adjoining former classroom spaces. The building retains original wood floors, some original wood doors, and original light fixtures. Some portions of brick masonry are exposed in the great hall and adjoining former classrooms between and below the sets of windows. The living room/kitchen wing and the basement have wood baseboards, narrow crown molding, wood window sills, and radiators. Almost all the windows in the building are original, multi-pane, wood-sash windows in a double-hung or hopper configuration. Some original bathroom fixtures are present throughout the building.

The property's current owner has painstakingly restored the building's windows, shingle siding, and concrete foundation, and reroofed the building and its dormers. Additional restoration and rehabilitation projects continue at the time of this writing.

The main floor is accessed through the central doors, which open onto the great hall or ballroom. The cavernous space contains all original windows and wood floors. To the west, stretching the full depth of the hall, is a nonoriginal folding wall (painted light green) that divides the great hall from two former classroom spaces to the west (Photo 56). The wall has two doors that access two separate rooms with dropped ceilings and fluorescent light fixtures, likely added in the later twentieth century to accommodate the Opportunity School (Photo 57).

The eastern end of the great hall has another dividing wall with a door at the far northern end. Through this door is another room that was used as a classroom and is now being used as a living space (Photo 58). This room has a dropped ceiling with fluorescent light fixtures similar to the classroom on the western side. A door at the northern end of the eastern wall of the eastern classroom exits to the outside.

At the northwestern corner of the great hall is a set of double doors that lead north into the flat-roofed living room/kitchen wing added in the 1930s. The floors in this part of the building are covered in green sheet linoleum. To the left, in the living room space, is a door that exits west to the outside and a fireplace with painted bricks and a non-historic mantle. To the right are double doors that lead down the ramp to the eastern entry and covered porch area. North of this set of double doors is another set of double doors that lead into the kitchen, which features original (1930s) cabinets, countertops, and a window-mounted exhaust fan (Photo 59). The floor is a variegated-brown linoleum.

North of the kitchen is a small bedroom with linoleum floors and an original 1930s-era ceiling-mounted light fixture. A bathroom off the northwestern corner of the bedroom contains two wood stalls, two toilets (one in each stall), and a pedestal sink. The light fixture and push button switches are original to the room's 1930s construction. The floor is the same linoleum as the living room and bedroom. West of the first bedroom is a second bedroom with the same linoleum floors and original 1930s light fixture (Photos 60 and 61).

Shoshone County Poor Farm

Shoshone, Idaho

Name of Property

County and State

Exiting the living room/kitchen wing through the eastern set of doors, there is a small landing and a ramp (covering concrete steps) that leads down to the enclosed porch area. This area also contains a set of concrete steps that lead down into the basement (Photo 62). East through another set of double doors is a small vestibule, through which is an exterior set of double doors to exit the building.

At the bottom of the stairway into the basement is a short hall. A door on the right of the stairway leads to an unfinished utility room with a large old furnace and other equipment. A doorway on the left of the stairway (to the south) enters a large open room. In the southwestern corner of the room is a small bedroom with two doors, one each in the north- and east-facing walls. A heavy metal door in the western wall of the large room enters into a recreation area that contains a bar with bar stools and a back bar in the southeastern end of the room. The bar is covered in linoleum. Wood benches have been built around each of the posts in the bar area for additional seating (Photos 64 and 65). A heavy metal door in the western wall of the back bar enters a former munitions or weapons storage room that has concrete floors, walls, and ceiling. A wood cabinet in this room opens to reveal a wood barrel rack mounted on its back wall (Photo 63).

In the large, open, basement room, there are two doorways in the northern wall. The doorway to the west has a pair of wood swinging stall doors that open into a bathroom. The bathroom has a sink at the northern end and a series of wood stalls along the eastern wall that house toilets and urinals. The second doorway is located just east of the bathroom doorway. This doorway enters an office that was used by the Idaho State Guard during between 1942 and 1946; the room still contains shelving and woodwork surfaces from that time period.

Resource 4
Garage (2012)
Noncontributing

The current owner of Memorial Hall built a detached garage northeast of the building in 2012. The garage is a two-story, 26 feet by 20 feet, wood-frame building, rectangular in plan, with a one-story, 12 feet by 16 feet wing extending off the northeast elevation (Photo 66). The building is oriented with a ridgeline running southeast–northwest. The garage appears to sit on a concrete pad foundation and is clad in stained, horizontal board siding with a painted wood belt course between the two stories and below the eave of the gambrel roof. The eave ends are clad in painted shingle siding, with a red, ribbed-panel, metal roof atop the main body of the building and the one-story extension. The roof eaves are supported by decorative wood angle brackets. The southeast elevation features a standard white paneled fiberglass overhead garage door on the first floor, with a fixed, 18-light, vinyl-frame, picture window centered below the gable end. The southeast elevation of the one-story extension is articulated by two, nine-over-nine-light, sash windows (Photo 67). The northeast elevation has a grade-level entrance on the first floor distinguished by a single, two-light, wood-frame door with fixed, vertical, wood-frame windows on either side. On the second story, two additional fixed, vertical, wood-frame windows define each corner of the elevation. The northwest elevation has a single wood entry door accessing a wood-frame deck with a wood railing (Photo 68). The converted oil tank (resource 5) sits below and just in front of this deck. The southwest elevation has two fixed, vinyl-frame windows on the

Shoshone County Poor Farm

Shoshone, Idaho

Name of Property

County and State

second story and no openings on the first story; a wood stair with wood railing and balusters provides access from the second-floor deck down to grade level on this elevation (Photo 69).

Although the garage has some physical characteristics that reference the adjacent historic Memorial Hall, the building is noncontributing, as it was built outside the period of significance and has no historical relationship to the Poor Farm.

Resource 5
Oil Tank (c. 1917)
Noncontributing

North of the garage sits a former 10,000-gallon steel oil tank measuring approximately 27 feet long and 7 feet in diameter. The tank was an early source of fuel to supply a steam boiler that heated the building. The tank was originally belowground but was moved aboveground due to environmental concerns; the parcel owner eventually cut openings in each end, and now uses it for storing wood (Photos 70 and 71). Although the oil tank dates to the period of significance, because it was decommissioned, moved, and modified for use as a wood-storage structure, the structure has lost integrity of location, design, setting, materials, workmanship, feeling, and association. The oil tank is a noncontributing resource.

Resource 6, Storage Structure, Noncontributing: A round-arched, canvas, storage structure located north of Memorial Hall (Photo 72); it dates to 2025.

Resource 7, Storage Structure, Noncontributing: An aluminum-frame, two-vehicle shelter northeast of the new Memorial Hall garage (Photos 73 and 74); it dates to 2025.

Resource 8, Fence, Noncontributing: A split-rail fence along the eastern side and a portion of the southern side of the Memorial Hall parcel, bisected by a paved driveway (Photo 75). This fence was built by the property owner between 2012 and 2013.

Resource 9, Fence, Noncontributing: A split-rail fence along the northwestern and northeastern sides of the Steam Plant parcel, bisected by paved driveways on the western and northern sides of the parcel (Photo 76). This fence was built by the property owner between 2012 and 2013.

Resource 10, Fence, Noncontributing: A short cyclone fence surrounding a yard space in front of Memorial Hall, which extends from the building south and then across the front of the parcel (east–west); unknown date (Photo 76).

Resource 11, Pole Barn Structure, Noncontributing: One of two metal pole barn structures located southeast of the Steam Plant and northwest of the Infirmary and used for storage (Photo 77). The structure dates to late 2024 or early 2025.

Resource 12, Pole Barn Structure, Noncontributing: The second of two metal pole barn structures located south of Resource 11 and due west of the Infirmary and used for storage (Photo 78). The structure was built in late 2024 or early 2025.

Shoshone County Poor Farm

Shoshone, Idaho

Name of Property

County and State

Resource 13, Coop, Noncontributing: A small, galvanized-steel, front-gabled structure built north of the Infirmary in 2023 to house chickens (Photo 79). A single wood entry door with six fixed lights above a lower inset panel is centered in the east elevation. An adjacent, low, galvanized-steel structure covered in canvas provides shade for the chicken run outside the coop.

Change Over Time and Integrity

The Shoshone County Poor Farm functioned as a residential, medical, and agricultural property beginning in 1917. Despite the sale of the agricultural parcels, changes in use, and alteration to the Infirmary as needs and programming changed, many of the defining physical characteristics of the Infirmary and Memorial Hall remain intact. Elements common to both the infirmary and Memorial hall include the red brick cladding atop a partial daylight concrete basements, side-gable roof forms with clipped ends, clipped gable dormers (though the number and size of the dormers are different), and braced wood angle brackets supporting the heavy overhanging eaves with exposed rafter tails. The roof eaves are broken by the wall dormers on both buildings, though the large single dormer of Memorial Hall differs from the smaller three dormers of the infirmary. The buildings also share wood, multi-light windows in common, although the configurations of lights and sash versus fixed casement windows differ somewhat. Both buildings have glazed double entry doors with sidelights and transom. The common design elements tie the buildings together as extant buildings on the Shoshone Poor Farm, and also link them with their common designer, Archibald Rigg.

The setting of the original Poor Farm buildings has changed with the sale of adjacent parcels and their development, although three contiguous parcels still maintain buildings of the Poor Farm. Namely the Infirmary, Steam Plant, and Memorial Hall are visible from Satherfield Road. These buildings have views of the forested hillsides and the town of Silverton, which are indicative of the Poor Farm's original setting. Resource that were not part of the Poor Farm but now present within the Poor Farm's original 45-acre parcel include a contemporary storage unit facility with an office and warehouse/shop (pole barn) building at the northern end (Parcel RP48N04E214900); a home health care office (Parcel RP48N04E214750); the pasture-like Silverton Park fronting the Infirmary (Parcel RPO29050000030); two baseball fields and adjacent parking lot (Parcel RPO29050000020); a football field and surrounding track with bleachers, announcers booth, snack bar/restrooms, groundskeepers shed, and a practice football field (Parcel RPO29050000010); a vacant parcel (Parcel RPO29050000090); a County-owned yard with pole barn building (Parcel RPO29050000050); a metal pole barn (Parcel RP48N04E214607); a vacant parcel with a partial wood-fenced and a baseball field backstop at the easternmost end (Parcel RPO29050000070); and the Wallace 393 District Office building, surrounded by a short cyclone fence (Parcel RP48N04E214650), which is located at the far northeastern end of the original Poor Farm acreage. However, these resources are small in-scale compared to the extant historic buildings from the Poor Farm.

Major changes to the Infirmary during the period of significance include a two-story addition to the north wing in 1934, a two-story addition to the east wing in 1964, and the construction of a shed-roofed, CMU addition sometime circa 1969. The original cedar shingle roof was replaced with an asphaltic composition shingle material that roughly mimics the appearance of the original, and the balustrade on the second level of the entry porch was removed, although the date of this alteration is unknown. Minor alterations or infill of some windows on the north, east,

Shoshone County Poor Farm

Shoshone, Idaho

Name of Property

County and State

and west elevations are mostly restricted to the lower levels and not easily viewed from Satherfield Road. Photos from 1917 and 2024 demonstrate that the building retains much of its original appearance in form and materials (see Figure 15 and Photo 6).

The Steam Plant has experienced the most change since its construction in 1917. Built to house boilers for power and heat generation, according to newspaper accounts the building also initially included laundry facilities. By 1927, the building incorporated an auto repair garage in the eastern bay and, by 1939, the original double door entry on the eastern side of the south elevation had been enlarged and a new roll-up door inserted (Figure 19, far right). Sanborn maps indicate the presence of an auto repair garage in the eastern bay of the building in 1927; by 1948, the smokestack had been removed, and the building was used as a general repair shop.³

According to the current owner, the Steam Plant building was converted for use as a county health department office ca. 1950 and later served as a women's crisis center. The roof may have been converted to a gable form at that time. In the latter half of the twentieth century, all windows and doors in the building were reshaped, boarded up, and covered with concrete, or replaced with smaller windows made of vinyl or fiberglass. The current basement entry doors are simple wood double doors and obscure the original wood doors (still extant behind the modern doors). A wood-frame exterior walkway and deck were likely added when the building was converted for use as a health clinic. The south elevation was completely coated in concrete stucco, and all original openings were covered and/or altered in shape and dimension, possibly when the building was converted to a three-bedroom residence.

A comparison of historic-period and contemporary photographs of Memorial Hall shows that original materials and design features from the building's 1917 construction are extant, including the original foundations, cladding, windows, and roof forms (Figure 18 and Photo 49). Major alterations during the period of significance include the addition of a one-story massing on the north elevation in the 1930s, east entry alterations in the 1960s, the replacement of the original cedar shake roofing with ribbed metal, and the infill of several basement windows with wood planks and metal roofing panels.

Memorial Hall and the Steam Plant were purchased by a private individual in 2008, and the Infirmary was purchased by a private individual in 2020. Memorial Hall and the Steam plant have been converted into private residences. The Infirmary was converted into a boutique hotel, with interior renovations ongoing as of 2024.

Known alterations to the Shoshone County Poor Farm property after the period of significance include:

³ Sanborn Fire Insurance Maps from 1927 indicate the presence of a smokestack, and a photograph from 1939 indicates it was still present at that time. A Sanborn Map from 1927 adjusted to 1948 indicates that the smokestack had been removed by this time. Sanborn Map Company, "Wallace, Shoshone County, Idaho, October 1927," New York: Sanborn Map Company, 1928, https://digitalsanbornmaps-proquest-com.ezproxy.spl.org/browse_maps/14/2015/9107/9532/125437?accountid=1135; Sanborn Map Company, "Wallace, Shoshone County, Idaho, October 1927," New York: Sanborn Map Company, 1928, corrected July 1948, https://digitalsanbornmaps-proquest-com.ezproxy.spl.org/browse_maps/14/2015/9107/9532/125437?accountid=1135.

Shoshone County Poor Farm

Shoshone, Idaho

Name of Property

County and State

Infirmary (Resource 1)

- Replacement of the main entry doors and sidelights with modern, steel-frame, single-light double doors with steel-frame sidelights and transom.
- Replacement of the second-level double doors that once provided access to the deck atop the main entry porch with wood-frame, ten-light double doors. (Sidelights and transom appear original.)
- Windows in the 1964 addition were replaced with like materials, including double-hung, aluminum-frame sash windows.
- Replacement of the cedar shake roof with an asphaltic composition roof that roughly mimics the appearance of the original roof.
- New paint in some of the first-floor hospital rooms and the dining room.
- New carpet in the 1964 wing on the main floor.
- Upgrades to appliances in the kitchen.
- Minimal alterations to the small bathrooms in the 1964 wing (some new tile floors and fixtures).

Steam Plant (Resource 2)

- Alteration of window and door openings after 1950; no original windows or doors remain except the basement entry doors on the west elevation, which are covered with newer wood doors.
- Introduction of an exterior ramp on the east elevation.
- Addition of a wood-frame, gable roof clad in corrugated metal with corrugated metal in the gable ends.
- Interior converted to a three-bedroom residence in the late twentieth century, including the installation of a kitchen and bathroom.
- New CMU wall partitions in the basement, although the original heavy concrete floor supports are still visible.
- Nonoriginal roofing replaced in 2015–2016 by present owner.

Memorial Hall (Resource 3)

- Replacement of original cedar shake roof with rib metal roofing ca. 2015–2016.
- Replacement of original window on the west elevation of the north addition with vinyl-frame window with applied muntins; bricks infill the remainder of the original window opening.

The original oil storage tank (Resource 5) was relocated to the northwestern side of the garage after 2012. At that time, openings were cut at each end to provide access so the tank could be used for wood storage.

Additional resources built after the period of significance include the detached garage (Resource 4) built in 2012; round-arched canvas storage structure (Resource 6) installed in 2025; aluminum-frame, two-car vehicular cover (Resource 7) installed in 2025; split-rail fences (Resources 8 and 9) built in 2012–2013; cyclone fence (Resource 10) at an unknown date; metal

Shoshone County Poor Farm

Shoshone, Idaho

Name of Property

County and State

pole barn building (Resource 11), which dates to late 2024 or early 2025; a second metal pole barn building (Resource 12), which dates to late 2024 or early 2025; and a galvanized-steel chicken coop and run (Resource 13) built 2023.

Integrity

The Shoshone County Poor Farm retains historic and architectural integrity despite alterations over time. The Infirmary (Resource 1), Steam Plant (Resource 2), and Memorial Hall (Resource 3) retain integrity of location.

The original 45 acres of the Shoshone County Poor Farm have been altered by the sale of land to the south and west and the construction of several newer storage and residential buildings on what was historically open land west of the Infirmary, resulting in a loss of integrity of setting for all three extant historic buildings.

The Infirmary and Memorial Hall retain sufficient integrity of materials, design, and workmanship to convey their historic significance. Many original design aspects remain intact, including the buildings' general form, massing, and distinctive clipped gable roofs. The Craftsman characteristics, applied in an institutional setting at the Infirmary and Memorial Hall, place the Shoshone County Poor Farm among the larger extant examples of this style in Idaho. The Infirmary and Memorial Hall stand on original foundations, with the brick walls, wood cladding, and most windows intact. Minor alterations or infill of some windows on the north, east, and west elevations of the Infirmary are mostly restricted to the lower levels. Photos from 1917 and 2024 depict the buildings' retention of much of their original appearance in form and materials.

The Infirmary and Memorial Hall retain some integrity of feeling, although the purely rural character of the original Poor Farm has been compromised by the introduction of additional residential and commercial buildings between the Infirmary and Memorial Hall. The Infirmary and Memorial Hall also retain integrity of association, as they retain sufficient physical features to convey their historical uses, although they no longer serve those purposes.⁴ The Infirmary and Memorial Hall retain sufficient integrity to convey their significance as the last remaining contributing buildings of the Shoshone County Poor Farm.

Although built in 1917 along with other Poor Farm buildings, the Steam Plant (Resource 2), does not retain sufficient integrity to convey its significance. As noted, the building retains integrity of location but has lost integrity of setting. The building has also lost integrity of design, materials, workmanship, feeling, and association, due to extensive exterior and interior changes that have no relationship to the building's historical use as a steam plant, laundry, automobile repair garage, and/or general repair shop for the Shoshone County Poor Farm. The building does not retain recognizable elements that demonstrate its historical purpose, such as the original smokestack and window and door configurations. While it retains its historic-period proximity to the Infirmary and Memorial Hall, the heavy alterations to its appearance and use, combined with

⁴ National Park Service, *National Register Bulletin 15: How to Apply the National Register Criteria for Evaluation* (Washington, DC: U.S. Department of the Interior, 1995), 45.

Shoshone County Poor Farm

Shoshone, Idaho

Name of Property

County and State

the introduction of adjacent contemporary storage facilities and other unrelated structures, inhibit its ability to convey its historical significance.

As noted, the oil tank (Resource 4) was initially constructed in the historic period but was relocated and repurposed for wood storage. It has lost integrity of location, setting, design, workmanship, feeling, and association, though it retains integrity of materials. As such, it is noncontributing to the Shoshone County Poor Farm.

The remaining resources (Resources 5–13) were built outside the period of significance (between 2012 and 2025) and do not contribute to the historical significance of the Shoshone County Poor Farm.

DRAFT

Shoshone County Poor Farm
Name of Property

Shoshone, Idaho
County and State

8. Statement of Significance

Applicable National Register Criteria

- A. Property is associated with events that have made a significant contribution to the broad patterns of our history.
- B. Property is associated with the lives of persons significant in our past.
- C. Property embodies the distinctive characteristics of a type, period, or method of construction or represents the work of a master, or possesses high artistic values, or represents a significant and distinguishable entity whose components lack individual distinction.
- D. Property has yielded, or is likely to yield, information important in prehistory or history.

Criteria Considerations

- A. Owned by a religious institution or used for religious purposes
- B. Removed from its original location
- C. A birthplace or grave
- D. A cemetery
- E. A reconstructed building, object, or structure
- F. A commemorative property
- G. Less than 50 years old or achieving significance within the past 50 years

Areas of Significance

(Enter categories from instructions.)

 Social History
 Provisions for the Poor
 Government Hospitals
 Community Social Halls

Period of Significance

 1917-1974

Shoshone County Poor Farm
Name of Property

Shoshone, Idaho
County and State

Significant Dates

1917: Construction of Infirmary, Steam Plant, and Isolation Hospital.
1931: VFW groups convert Isolation Hospital to Veteran's Memorial Hall and begin hosting community events.
1934–1935: Addition of two stories atop Infirmary north wing.
ca. 1935: North wing added to Memorial Hall.
ca. 1945: Smokestack removed from Steam Plant.
ca. 1950–1960: Steam Plant converted for use as county health clinic.
1956: Opportunity School for children with intellectual disabilities opens at Memorial Hall.
1964: Two-story addition built on east wing of Infirmary to house female and underage patients.
1974: Infirmary closes; building is transferred to U.S. Forest Service for use as Wallace Ranger Station.

Significant Person

(Complete only if Criterion B is marked above.)

N/A

Cultural Affiliation

N/A

Architect/Builder

Archibald G. Rigg, architect
A. J. Turner, general contractor

Statement of Significance Summary Paragraph

The Shoshone County Poor Farm is eligible for listing in the NRHP under Criteria A and C under the NRHP MPD for Metal Mining in Idaho for its association with events related to the area's mining and social history, at a local level. The Poor Farm is eligible under the MPD as an example of the property type Mining Settlements, Housing, and Community Facilities, and the subtypes Housing and Community Facilities.⁵

The story of metal mining in Idaho encompasses both the technological innovations and geological conditions that made the mines productive, and the human communities that contributed to and benefited from the mines' productivity. As with all human-derived industry, metal mining in northern Idaho impacted the lives of those living in the communities in the Coeur d'Alene mining district, and brought injury, unemployment, and illness, along with economic success. Under Criterion A, the Shoshone County Poor Farm is significant for its critical, if now mostly forgotten, role in the lives of miners and their dependents in the Silver

⁵ Kathryn Burk-Hise and Samantha Thiel, "NRHP Multiple Property Documentation [MPD] form for Metal Mining in Idaho" (Historical Research Associates, Inc., Spokane, Washington; prepared for the National Park Service, Washington, DC, 2024).

Shoshone County Poor Farm

Shoshone, Idaho

Name of Property

County and State

Valley in providing for the care, housing, and social and educational activities for poor, indigent, and aging residents of the county between 1917 and 1974.

Designed by Spokane architect Archibald Grant Rigg, the Shoshone County Poor Farm embodies a distinctive interpretation of Craftsman design in an institutional context, which was used for a variety of educational and institutional buildings throughout the state. Under Criterion C in the area of Architecture, the Shoshone County Poor Farm is significant as an example of the Craftsman style applied in an institutional setting in Idaho.

Period of Significance

The Shoshone County Poor Farm is significant within two of the three temporal periods of the historic contexts defined in the MPD: Placer and Lode Mining, 1880–1930s, and Lode Mining and the Rise of Strategic Metal Mining, 1930s–1977. The period of significance of the Shoshone County Poor Farm (1917–1974) begins when the Infirmary and Isolation Hospital (now Memorial Hall) were built in 1917, and the period of significance ends after the Infirmary was transferred to the federal government in 1974.

Narrative Statement of Significance (Provide at least one paragraph for each area of significance.)

Criterion A

The Shoshone County Poor Farm is eligible for listing in the NRHP, as it meets the minimum eligibility requirements of the MPD for Metal Mining in Idaho under Criterion A. The Poor Farm is of the property type Mining Settlements, Housing, and Community Facilities, and the subtypes Housing and Community Facilities.

In 1916, the riches coming out of the metal mines in the Coeur d'Alene mining district made Shoshone County the wealthiest county in Idaho.⁶ This wealth contrasted significantly with the tenuous life of miners, prospectors, and county residents vulnerable to the economic boom and bust cycle of metal mining in the state. In the era before robust federal social safety provisions, these conditions made Silver Valley miners and residents among the most vulnerable to injury, illness, and abrupt changes in income, leading many to poverty and aging without economic or social support. The Shoshone County Poor Farm was built in 1917 with the intent to improve on a prior system of granting contracts to care for the poor to the lowest bidder with little oversight over the results. The Isolation Hospital, unused when first constructed, became important in the social life of the community as a dance hall and home for veterans and community groups. Its mid- to late twentieth century use as a school for those with intellectual disabilities continued the legacy of the Poor Farm, albeit in a more educational context. The extant buildings, including the Infirmary, Isolation Hospital, and Steam Plant, represent Shoshone County's efforts to support residents with medical care, housing, education, and social engagement for more than sixty years.

⁶ "County Plans Best Care for Dependents." *Shoshone News-Press* (Kellogg, ID), November 5, 1916, <https://www.newspapers.com/image/1112228973/>.

Shoshone County Poor Farm

Shoshone, Idaho

Name of Property

County and State

In providing critical care for those made vulnerable by mining and the mining economy, and in supporting the social life of the Silver Valley community, the Shoshone County Poor Farm is significant under Criterion A as an example of the property type Mining Settlements, Housing, and Community Facilities, and the subtypes Housing and Community Facilities. The Poor Farm is a mining-related resource that was constructed and operated, and thus achieved its significance, between 1860 and 1977. It has a direct and significant association with metal mining, is located in the state of Idaho, and retains sufficient integrity to convey that significance.

Criterion C: Craftsman-style architecture in an institutional setting in Idaho

The extant contributing buildings of the Shoshone County Poor Farm, specifically the Infirmary (Resource 1) and Memorial Hall (Resource 3), are eligible for listing in the NRHP under Criterion C under the MPD Metal Mining in Idaho, as they represent notable examples of Craftsman-style architecture applied in an institutional setting in Idaho. These buildings meet the minimum eligibility requirements of the MPD and retain sufficient integrity to convey their significance. Due to significant alterations to the exterior, interior, and uses during and after the period of significance, the Steam Plant (Resource 2), no longer retains sufficient integrity to convey its significance and is noncontributing to the Shoshone County Poor Farm.

Craftsman design in the Pacific Northwest in the early twentieth century was typically for residential buildings, particularly single-family houses, as the philosophy of the style—simple, cost-saving design, a connection with nature, human scale, and natural materials—harmonized with the climate, terrain, and building materials commonly present in the forests of Idaho, Oregon, and Washington.⁷ In contrast, institutional buildings from this era such as hospitals, schools, and military housing often favored Classical or Colonial Revival forms that featured symmetry, brick or stone building materials, and the sense of permanence that came from architectural references to classical forms. At the Shoshone County Poor Farm, a marriage of classical massing with Craftsman architectural style yielded institutional buildings clad in local materials and finished with structural and design choices that simultaneously implied permanence and strength while using Craftsman design details to express the residential character of the Poor Farm. The design also responded to the snowy, mountainous terrain of the location in northern Idaho.

The two contributing Shoshone County Poor Farm buildings, designed by Spokane architect Archibald Grant Rigg (1878–1959), are each formed as a central, side-gabled block or T-shaped building built of brick with wood-frame roofs with overhanging eaves and exposed rafter tails. The Infirmary reflects a more classical massing, with a broad, central, front entry porch and three dormers placed symmetrically on the side-gabled roof below a centered cupola. This symmetrical, institutional massing is articulated with distinctive Craftsman detailing such as long overhanging eaves supported by wood knee braces and defined by exposed wood rafter tails. The distinctive clipped gable roofs on the side gables, dormers, and cupola promoted the shedding of heavy snow more quickly, reducing load on the roofs. This was an important feature during the snowy winters in northern Idaho. Memorial Hall, while incorporating the symmetry of its side-

⁷ Caroline T. Swope, Classic Houses of Seattle: High Style to Vernacular, 1870-1950. Portland, Oregon: Timber Press, Inc., 2005, 101-102.

Shoshone County Poor Farm

Shoshone, Idaho

Name of Property

County and State

gabled massing, central entry and dormer, and the stability of its brick structure, displays Craftsman design in the wide, wood-shingled, central dormer above the main entry and clipped gable roof and exposed rafter tails under overhanging eaves supported by decorative wood knee braces.

The Shoshone County Poor Farm buildings stand out in the limited group of Craftsman style institutional buildings in Idaho. Other examples include:

- The Hammett School, a Prairie/Craftsman-style building designed by Nisbet and Paradise and built in 1911 in rural Hammett, Idaho (Figure 20). This Prairie-style school is notable for its low-pitched hipped roof with overhanging eaves and decorative brackets, details uncommon in rural Idaho schools of the period. (NRHP Listing #100010906).
- The Bethany Deaconess Hospital, a vernacular bungalow-style institutional building constructed in 1926 in American Falls, Idaho, and listed in the NRHP in 1995 (NRHP Listing #95000507; Figure 21).
- The Children's Home Funding and Aid Society Building (740 E Warm Springs Avenue), referred to as Western Colonial Revival in the NRHP listing, presents as a Prairie/Craftsman-style building. Designed by Tourtelotte and Hummel, it was built in 1910 and listed in the NRHP in 1980 as part of the Warm Springs Historic District (NRHP Listing #80001287; Figure 22).

These buildings form an eclectic group within their unique architectural context. While all demonstrate historical significance related to their institutional purposes, the Hammett School and Children's Home Funding and Aid Society Building are also significant for their architecture. The Shoshone County Poor Farm buildings, with distinctive and more overt Craftsman materials and detailing, are significant examples of the eclectic application of Craftsman design in an institutional context.

Extended Historic Context: The Rise of Metal Mining in Northern Idaho

A detailed account of the precontact history of northern Idaho and development of the Coeur d'Alene mining district is included in the NRHP MPD form for Metal Mining in Idaho, under which the Shoshone County Poor Farm is eligible.⁸ The following summary of the history of the Coeur d'Alene area and the growth of the metal mining industry is adapted from the NRHP MPD form for Metal Mining in Idaho and the *Bunker Hill Mining and Metallurgical Complex Superfund Site Historic Properties Management Plan*.⁹

From time immemorial, Indigenous Tribes have occupied the lands in what would become the state of Idaho for homes and for seasonal hunting and gathering. Tribes of the Plateau cultural groups, including the Kootenai, Kalispel, Coeur d'Alene, Palouse, and Nez Perce Tribes live in northern and central Idaho. Interactions with groups and Tribes from the Great Plains culture

⁸ Burk-Hise and Thiel, "NRHP MPD form for Metal Mining in Idaho."

⁹ Heather Lee Miller, et al., *Bunker Hill Mining and Metallurgical Complex Superfund Site Historic Properties Management Plan* (Historical Research Associates, Inc., Seattle, WA; submitted to Environmental Protection Agency and Coeur d'Alene Trust, December 2014).

Shoshone County Poor Farm

Shoshone, Idaho

Name of Property

County and State

area, including the Blackfoot, Cheyenne, Arapaho, and Lakota Sioux, influenced traditional lifeways.¹⁰

Life for the Indigenous peoples was forever altered in 1805 when non-Indigenous people first reached Idaho with the Lewis and Clark Expedition, followed quickly by fur traders and trappers, missionaries, surveyors, prospectors, and colonizers.¹¹ Between 1858 and 1863, the federal government sponsored surveying and mapping expeditions that culminated in the construction of the 624-mile-long Mullan Road across northern Idaho, opening the region to non-Indigenous exploration and colonization. This road became the basis for early wagon and rail connections between mines and non-Indigenous population centers near the Coeur d'Alene River and, by the 1890s, served as a "Main Street" along the valley.¹²

The Coeur d'Alene mining district, also called Silver Valley, was established around 1880. Andrew J. Prichard discovered placer gold in notable quantities in the area in 1882, which prompted the Northern Pacific Railroad to publicize the news and encourage travelers to flock to the Coeur d'Alene area.¹³ While thousands came to the area in the winter of 1883, by spring, many found that claims had been staked on the most viable ground with access to placer gold. Many miners moved down the South Fork of the Coeur d'Alene River, encountering hard rock hillsides containing ore deposits of lead, zinc, and silver, which would become the most significant silver and lead mining area in the United States at the time. Many mines were built in quick succession, the largest of which were the Bunker Hill and Sullivan Mines. Hard rock mining led to the establishment of mining towns such as Wardner, Osburn, Gem, Burke, and Mullan to support the high number of men required to tunnel and blast to build the mines and extract and process the valuable metals. The complexity and expense of the operations called for corporations of stockholders who could carry the expense of starting up the mines until dividends could be paid from the resulting metals.¹⁴ The town of Wallace, Idaho, established at the confluence of Nine Mile Creek, Canyon Creek, Placer Creek, and the South Fork of the Coeur d'Alene River, while having no major mines in the immediate area, became a center for trading and transportation in the valley.¹⁵ The Northern Pacific and Union Pacific Railroads built rail infrastructure in the Silver Valley in the 1880s, following the route of the Mullan Road with branch lines expanding access to the district mines and population centers. The Northern Pacific built a Coeur d'Alene branch with passenger and freight service in the valley in 1890.¹⁶

The rapid growth of the mining industry in the Silver Valley brought miners and those supporting the industry, including millworkers, laundresses, cooks, saloon keepers, and women working in brothels, among many others. The 1890 census showed that 3,993 of the 4,000 residents of Shoshone County lived in towns along the Silver Valley. By 1894, Wallace was one of several towns in the Coeur d'Alene mining district with a population of 1,200 people, many of whom inhabited larger homes and established businesses along its main street. Both the Union Pacific and Northern Pacific Railroads provided access to the town, and branch lines extended

¹⁰ Deward E. Walker, Jr., *American Indians of Idaho* (Moscow: University of Idaho Press, 1971).

¹¹ Burk-Hise and Thiel, "NRHP MPD form for Metal Mining in Idaho."

¹² Robert Wayne Smith, *The Coeur d'Alene Mining War of 1892* (Corvallis: Oregon State University Press, 1961), 8.

¹³ Smith, *Coeur d'Alene Mining War*, 2.

¹⁴ Smith, *Coeur d'Alene Mining War*, 3.

¹⁵ Smith, *Coeur d'Alene Mining War*, 4.

¹⁶ Miller, et al., *Bunker Hill Mining and Metallurgical Complex*, 28.

Shoshone County Poor Farm

Shoshone, Idaho

Name of Property

County and State

into nearby valleys to access the mines.¹⁷ Wallace quickly developed as a trading center and became the county seat in 1898.

Mining in the nineteenth century was an industry of both opportunity and risk. Those brought to Idaho by the lure of the mines were often destitute when they arrived, having spent all their savings to equip themselves for the journey. Those who found work or staked successful claims to mines that yielded valuable metal ores were able to survive, and sometimes thrive, in the frontier towns that sprang up to house and entertain the miners. Far more were subject to the whims of fate, employers, illness, and weather and found themselves without resources. Further, any threat to the mining economy had the potential to send innumerable men and women into poverty.

As the population of the Silver Valley grew, so did the need for social supports for those injured or rendered unable to work in the mines, as well as their dependent families. While towns were not specifically built by mining companies, it was the prosperity of those companies that drove development, similar to that of a company town. Stores, boarding houses, and saloons were often owned by the mining corporations, offering miners credit and increasing their individual debts to the companies. Mining companies also occasionally sponsored the construction of community buildings, such as the Morning Club in Mullan (1921), which was built to provide local recreation for miners and their families during Prohibition.¹⁸ However, corporations failed to provide medical or social services, and eventually unions were created to offer miners and their families the health care and political support needed to survive the volatile economic environment in the Silver Valley.¹⁹

The cycles of economic booms, busts, and bank closures often abruptly shut down mines and put many out of work. Devastating fires like those in 1890 and 1910 destroyed much of Wallace, along with other mining towns. The Panic of 1893 saw the value of the metals coming out of the Silver Valley cut by 20 to 25 percent, affecting the health and welfare of valley residents. Many of the mines closed rather than face the difficult cost-cutting measures required to continue operations in the face of their devalued resources.²⁰ In addition, labor unrest created by disputes over miners' wages and benefits left many Shoshone County poor and indigent residents with little provision for their care.

Care for the Poor in Territorial Idaho

The concept of public care for the indigent poor and those with mental or physical illnesses in the United States was an inheritance from the colonists' English antecedents. With a widely held view that life in the newly created United States brought wealth and success to those willing to work for it, "a basic faith in the prosperity of the new world frequently led to a conclusion that economic failure was due to moral failure."²¹ Poverty, like mental illness, was attributed to vice,

¹⁷ Edward Gardner Jones, "The Oregonian's Handbook of the Pacific Northwest" (Portland: The Oregonian Publishing Co., 1894).

¹⁸ Miller, et al., *Bunker Hill Mining and Metallurgical Complex*, 31.

¹⁹ Smith, *Coeur d'Alene Mining War*, 14–15.

²⁰ Smith, *Coeur d'Alene Mining War*, 119.

²¹ David J. Rothman, *The Discovery of the Asylum: Social Order and Disorder in the New Republic* (Boston, MA: Little, Brown and Company, 1971), 161–62.

Shoshone County Poor Farm

Shoshone, Idaho

Name of Property

County and State

liquor, idleness, and vagrancy, rather than unavoidable circumstance, precisely because of the common perception that in the United States, opportunity was all around. The “worthy” poor included widows, orphans, the sick, and the aged, all of whom were considered exempt from condemnation. However, their care came to be seen as secondary to the fear that the willfully indigent, or “unworthy poor,” would be indulged if help were offered.²² Poverty was perceived to invite lawlessness, and the poor became akin to the criminal: “Rejecting the slothful took precedence over relieving the needy.”²³

Poorhouses and workhouses were intended to provide a basic standard of living at subsistence level but were designed to be unpleasant enough to deter those perceived to be poor due to laziness or vice. The work done at the poorhouse was meant to instill an industrious ethic and promote “virtuous living” in able-bodied beneficiaries of public assistance.²⁴ The reality in most communities was that the able-bodied who were sent to the poorhouse were usually there for a short time during periods of unemployment, illness, or other short-term crises, or were being held for vagrancy or public drunkenness as a means of keeping them out of the public eye. Furthermore, poorhouses or workhouses and poor farms routinely held a combination of those facing poverty or mental illness who were unable to support or care for themselves, those arrested for poverty-related crimes such as vagrancy, and orphaned children, often in crowded conditions that mixed these populations to their detriment.²⁵

In the western territories of the United States in the nineteenth century, similar provisions for the poor were included in early legislation.²⁶ In Idaho in 1863, the first territorial legislature passed a law assigning the care of the poor to county commissioners. Four counties, including Shoshone County, were tasked with creating poor farms for the support and employment of those who could not care for themselves within the county. In January 1871, Shoshone County Commissioners were authorized to collect a \$2.00 head tax, half of which was allocated “to go to the care and maintenance of the indigent sick, idiotic, and insane persons in said county.”²⁷

Other Idaho counties were tasked with similar efforts, including Ada County, which set an unfortunate standard for poor farms throughout the state. In 1883, Ada County purchased land northwest of Boise for a poor farm of 80 to 160 acres to house and care for the county’s indigent. The county’s poor were housed there, repaying the cost of their care by clearing ditches and farming. However, few were able-bodied enough to shoulder the work, superintendents and physicians were frequently charged with corruption and abuse, and the County learned that funds for improving conditions were embezzled rather than spent. A grand jury investigation in 1912 found that living conditions at the farm were squalid and unsanitary, with “animals on the farm

²² Rothman, *Discovery of the Asylum*, 164–65.

²³ Rothman, *Discovery of the Asylum*, 164–65.

²⁴ David Wagner, *The Poorhouse: America’s Forgotten Institution*. (Lanham, MD: Rowman & Littlefield Publishers, Inc., 2005), 49, 146.

²⁵ Wagner, *Poorhouse*, 146.

²⁶ Hansan, “Poor Relief in Early America.”

²⁷ *Poor Law Legislation*, Idaho State Historical Society, Reference Series #151, 4. Terminology used by government authorities and institutional and medical professionals to refer to people with developmental, intellectual, and cognitive disabilities (e.g., feeble-minded, idiot, insane, mental defective) has changed over time. While routinely used historically, some terms are now understood to be demeaning and offensive. In this report, HRA uses the term “people/persons with mental illness or intellectual disabilities” to discuss these individuals and their care.

Shoshone County Poor Farm

Shoshone, Idaho

Name of Property

County and State

being much better provided for . . . than are the pauper charges.”²⁸ By 1914, the Poor Farm had been condemned, and Ada County Commissioners agreed to the need for a modern hospital and nursing home.²⁹ Reformers throughout the United States increasingly recognized that, by the early twentieth century, poorhouses had commonly become hospitals and nursing homes for the aged and people with mental illness or disabilities, requiring more specialized facilities for their care.³⁰

While the welfare of the poor and indigent sick in the western mining towns of Idaho was approached with a similar philosophy to those efforts in more settled and well-resourced communities, the dangerous conditions and remote location of metal mines in the Coeur d’Alene mining district made the provision of medical care and institutional housing both essential and very difficult. After their founding in 1890, miners’ unions established funds to support hospital care, sick benefits, and burial expenses for those injured or killed in the mines. Unfortunately, these resources did not extend to other valley residents employed or attracted to the area by supporting industries and businesses, nor could they provide care to all miners who fell on hard times.³¹ Some private facilities, such as the Holland Memorial Hospital in Wallace (later known as the Wallace Hospital), were built to serve paying patients.³² However, there was no formal provision for those unable to pay other than a legislative injunction that the County provide some means of public assistance, as required by the 1863 territorial legislation.

In 1888, Shoshone County Commissioners attempted to address their obligation to the poor and indigent sick in the county with plans to build a County Hospital at Osburn, but the facility was never built. In its place, a county doctor set up a medical area in Osburn consisting of seven tents, and operated this facility until it was moved to Wardner in 1891.³³ Meanwhile, miners’ unions, in conjunction with mine companies and local residents, raised funds for the construction and operation of a miner’s union hospital, which was built in Wallace and opened as the Providence Hospital in 1892.³⁴ In 1897, the Spokane County, Washington, Poor Farm reported that most of its inmates were being sent from the mining hospitals in Idaho, Montana, and British Columbia, and urged that something should be done to care for them where they lived and worked to relieve pressure on the Spokane facility.³⁵ By 1903, Coeur d’Alene mining district poor and sick were housed at Providence Hospital with costs being paid by Shoshone County.

Shoshone County Poor Farm and Isolation Hospital

Shoshone County Commissioners sought bids for care of the poor to more directly, and cost effectively, address the growing numbers of needy residents. Contracts were let to individuals to care for the poor in exchange for funds from the County, a piecemeal system that had little

²⁸ “County Home is Denounced by Grand Jury,” *Idaho Statesman* (Boise, ID), October 17, 1912, 15.

²⁹ Todd Shallat and Namany Asmussen, “Farming the Poor,” *The Blue Review* (Boise, ID), May 13, 2016, <https://www.boisestate.edu/bluereview/ada-county-poor-farm/>; Katz, *In the Shadow of the Poorhouse*.

³⁰ Katz, *In the Shadow of the Poorhouse*, 96.

³¹ Smith, *Coeur d’Alene Mining War*, 13–14, 19.

³² Richard G. Magnuson, *Coeur d’Alene Diary: The First Ten Years of Hardrock Mining in North Idaho* (Portland, OR: Metropolitan Press, 1968), 44, 47

³³ Magnuson, *Coeur d’Alene Diary*, 141.

³⁴ Smith, *Coeur d’Alene Mining War*, 21.

³⁵ “Spokane County Poor Farm: Superintendent Pittam says Foreign Paupers Are Sent to Him,” *Spokesman Review* (Spokane, WA), January 4, 1897, 5, <https://www.newspapers.com/image/566375065/>.

Shoshone County Poor Farm

Shoshone, Idaho

Name of Property

County and State

oversight.³⁶ By 1915, responsibility for the poor in Shoshone County had changed hands many times. The County Commissioners found that the contract system was expensive and unsatisfactory. The indigent poor continued to be housed on farms under contract with the county, while the indigent sick were housed at various hospitals. To address the challenges of supporting the poor and indigent more efficiently, the County Commissioners proposed to use funds from the sale of the old Shoshone County courthouse for a poor farm fund “to procure a suitable site with a tract of ground in connection suitable for gardening purposes and to erect a commodious building for housing indigents similar to the system in vogue in eastern states, where the county charges who are able to work can make the institution practically self-supporting.”³⁷ A hospital ward would be included in the plan, attended by the County physician.

Other counties in Washington and Idaho were pursuing the same course, viewed as a more modern approach to care for the poor. In 1910, Spokane County abolished the name “Poor Farm” in favor of “County Infirmary” for the old facility at Spangle, Washington, in order to change the psychology of funding and residing in the institution. They believed the name would “serve the purposes of the old poor farm to better advantage . . . [as] the name ‘poor farm’ has a forbidding sound to many persons who have met with misfortune but have the pride of better days.”³⁸ Earlier reports of abuse and scandal had plagued the Spokane County Poor Farm, and an effort to rename the institution may have also been an attempt to re-frame expectations of the public and the managers for the treatment of the poor, most of whom were elderly, infirm, or children.³⁹

Unfortunately, the name change did not accomplish the much-needed reforms. In 1912, vermin, filth, and neglect were reported at the Spokane County Infirmary by women visiting the facility. They were dismayed that these conditions were not made public by County officials or Infirmary superintendents.⁴⁰ By 1913, plans for a completely new infirmary and complex had been drawn for the old Poor Farm site in Spangle, which would include a new steam heating and power plant and a cottage for the superintendent. Designed by Spokane architect Archibald Grant Rigg, the complex was praised as a “model farm” with “modern conveniences [such as] an excellent sewage system . . . modern kitchen, powerhouse and laundry,” and amenities like a reading room, dining hall, and separate living quarters for men and women.⁴¹ The new Infirmary was completed in 1914.

Looking to Spokane County’s example, in 1916, Shoshone County Commissioners selected a 45-acre parcel of land, buildings, farming equipment, and stock owned by Charles H. Strope for the

³⁶ “Idaho—Continued,” *Spokesman Review* (Spokane, WA), April 27, 1903, cited in Cindy Nunn, “History of the Poor Farm and Infirmary,” May 31, 2021,

<https://historicsshoshonecountyinfirmary.wordpress.com/2021/05/31/history-of-the-poor-farm-infirmary/>.

³⁷ “Neighborhood News of Washington, Oregon, Idaho, Montana, British Columbia, and Alaska: Wallace,” *Spokesman Review* (Spokane, WA), July 30, 1915, 7, <https://www.newspapers.com/image/568066323/>.

³⁸ “County No Longer Has Poor Farm,” *Spokesman Review* (Spokane, WA), April 9, 1910, 20, <https://www.newspapers.com/image/566178378/>.

³⁹ “The Poor Farm Scandal,” *Spokesman Review* (Spokane, WA), November 12, 1895, 4, <https://www.newspapers.com/image/566377515/>.

⁴⁰ “Woman Points Out Horrible Affairs Existing At The County Poor Farm,” *Spokesman Review* (Spokane, WA), March 12, 1912, 16, <https://www.newspapers.com/image/566200802/>.

⁴¹ “Spokane County’s New Poor Farm Building,” *Spokesman Review* (Spokane, WA), October 19, 1913, 6, <https://www.newspapers.com/image/566521571/>.

Shoshone County Poor Farm

Shoshone, Idaho

Name of Property

County and State

location of the new Poor Farm, at a cost of \$10,000.⁴² They hired the same architect, Archibald Rigg, to design a similar facility for the new Infirmary outside Wallace, including the Infirmary itself, a powerhouse, and a 50,000-gallon reservoir.⁴³ A. J. Turner was chosen as the general contractor, and Roberts-Inskip Plumbing would provide plumbing, heating, water, and sewer construction for the project. Lee Farrell of Spokane was the construction supervisor.

Archibald Grant Rigg (1878–1959) was a prominent Spokane architect known for large public projects such as asylums, hospitals, and collegiate buildings, as well as commercial and residential projects. Born in Ontario, Canada, Rigg trained in Toronto and New York and spent his early career in Illinois and Indiana, designing homes, social clubs, and large government projects, including several buildings at the Indiana State Insane Asylum.⁴⁴ Rigg relocated permanently to Spokane in 1910 and established a firm with fellow architect Arthur W. Crowley, designing multiple large apartment buildings, a hotel, and homes for prominent citizens. His partnership with Crowley ended in 1914, after which he continued his residential and commercial practice under his own name.⁴⁵ That year, Rigg designed the Spokane County Infirmary at Spangle, followed by the Edgecliff Tuberculosis Sanitarium in 1915. Rigg's other projects during this period included several homes, commercial blocks, and a hospital.⁴⁶ In 1919, Rigg partnered with Roland Van Tyne to design the 50-building Greene Park Amusement Park in Tacoma for the U.S. Army. In conjunction with this project, the firm designed the Red Shield Inn, a 150-room, three-story hotel built by the Salvation Army to house the families of soldiers recovering from war wounds at Camp Lewis.⁴⁷ The inn opened in 1919 and was later converted to the Fort Lewis Military Museum. The building is listed in the NRHP in 1979 (Listing #79002552).

Reports of the construction contracts indicated that an Isolation Hospital was included in addition to the main Infirmary.⁴⁸ The new Shoshone County Poor Farm Infirmary and associated Steam Plant were completed in 1917. Census records indicate a variety of residents lived at the Poor Farm in the 1920s, including at least seven inmates still employed in the mining industry while living at the Infirmary. Occupations noted in the 1920 census for the Infirmary (Resource 1) included miners, laborers, mill workers, seamstresses, and many unemployed.⁴⁹

⁴² "To Purchase Ranch for Poor Farm" *Shoshone News-Press* (Kellogg, ID), April 14, 1916,

<https://www.newspapers.com/image/1112432584/>.

⁴³ "Local Men Build Shoshone Wards," *Spokane (WA) Chronicle*, September 15, 1916, 14,

<https://www.newspapers.com/image/563594304/>.

⁴⁴ Note that this is the name of the institution as given by the State of Indiana. See footnote 31 for an explanation of HRA's language usage in this report.

⁴⁵ Michael Houser, "Archibald G. Rigg," accessed September 10, 2024, <https://dahp.wa.gov/historic-preservation/research-and-technical-preservation-guidance/architect-biographies/bio-for-archibald-g-rigg>.

⁴⁶ "Archibald Grant Rigg," *Pacific Coast Architecture Database* (Seattle: University of Washington, 2024), <https://pcad.lib.washington.edu/person/6945/>.

⁴⁷ Duane Colt Denfield, "Fort Lewis: Red Shield Inn (Fort Lewis Museum)," HistoryLink Essay 9647, May 8, 2011, <https://www.historylink.org/File/9647>.

⁴⁸ "County Hospital Contract Let," *Spokesman Review* (Spokane, WA), September 10, 1916, 10, <https://www.newspapers.com/image/566587572/>.

⁴⁹ U.S. Bureau of the Census, "Fourteenth Census of the United States: 1920 – Population. Shoshone County, Idaho, Wallace No. 1 Precinct, Shoshone County Infirmary," <https://historicsshoshonecountyinfirmary.wordpress.com/infirmary-census-records/#jp-carousel-1045>.

Shoshone County Poor Farm

Shoshone, Idaho

Name of Property

County and State

The separate Isolation Hospital was completed later that same year, in 1917. This building was used briefly during the influenza epidemic of 1918–1919 and offered to the federal government for use as a tuberculosis hospital in 1921. Initial plans called for \$20,000 worth of upgrades and the construction of an ambulance garage adjacent to the building, but subsequent reports indicate that the Isolation Hospital remained largely unused into the 1930s. In 1931, the building was transferred to the care of the VFW Shoshone Post No. 1675 and the American Legion and their auxiliaries, for use as a social hall. Funds raised through Soldiers and Sailors memorial levies, collected by Shoshone County, paid for the building's upkeep.⁵⁰ The veterans' groups planned to convert the building to a community hall with a dance floor and lodge meeting rooms.⁵¹ Renamed Memorial Hall, the building was used for dances, Veterans Day observances, fundraising dinners, rummage sales, stag parties, as an Opportunity School for children with intellectual disabilities, and for local church meetings through the remainder of the twentieth century.

In 1933, the Shoshone County government announced plans to add a second story to the rear ell of the Infirmary over the kitchen and dining area to provide four additional wards for hospital patients. The plan would employ 435 local men using funds from the County Works Administration. Federal funds were exhausted before the project was completed, and the County funded the remainder in 1934.⁵² While New Deal-era reforms aimed to end the almshouse/poorhouse approach to poverty, the largest support program, Social Security, excluded many people who poorhouses traditionally cared for, especially individuals who were elderly or disabled. Social Security payments were structured like insurance and based on ten years of contributions, making those who had not worked in many years ineligible.⁵³ Those with intellectual disabilities were not covered by Social Security until 1956, and many people on the margins were left out of the mid-century prosperity that followed World War II, continuing their dependence on the Shoshone County Poor Farm.

As was common in poorhouses and poor farms throughout the nineteenth and twentieth centuries, the Shoshone County Poor Farm Infirmary was also used as a temporary holding facility for those accused of lesser crimes such as drunk driving, arson, and theft.⁵⁴ Multiple accounts in the *Shoshone News-Press* from the 1950s describe a population of mostly underage young men and women cycling through the County Infirmary, and it seems a sentence to time in the Infirmary was a lighter consequence than time in the County jail. For example, in 1957, a woman accused of assault with a deadly weapon had her sentence "commuted" to time to be served in the County Infirmary because the judge had recommended clemency.⁵⁵ A section of the Infirmary was set aside for these detentions, and after an inspection in 1958, the Idaho State Health Department recommended that "adequate housing for delinquent youths and female

⁵⁰ "Acceptance is Goal of Opportunity School," *Shoshone News-Press* (Kellogg, ID), October 23, 1970, 2, <https://www.newspapers.com/image/1070125007/>.

⁵¹ "Wallace Veterans Eye \$38,000 Plant as Home," *Spokane (WA) Chronicle*, July 19, 1930, 3, <https://www.newspapers.com/image/562855160/>.

⁵² "County Building First on List," *Spokane (WA) Chronicle*, November 30, 1933, 18, <https://www.newspapers.com/image/562046534/>; "Pearson Given Infirmary Job," *Spokane (WA) Chronicle*, July 31, 1934, 19, <https://www.newspapers.com/image/561991293/>.

⁵³ Wagner, *Poorhouse*, 133.

⁵⁴ Wagner, *Poorhouse*, 136–37.

⁵⁵ "Mrs. Dargel Sentenced Today," *Shoshone News-Press* (Kellogg, ID), March 15, 1957, 1, <https://www.newspapers.com/image/1069360520/>.

Shoshone County Poor Farm

Shoshone, Idaho

Name of Property

County and State

prisoners outside of the present structure” should be provided.⁵⁶ In 1964, a two-story, flat-roofed addition was built onto the eastern end of the 1917 massing, likely as a result of this recommendation. In the 1970s, a small, shed-roofed, CMU structure was added to the rear ell, used as a temporary holding facility.

In 1974, Shoshone County Fire Marshals determined the Infirmary no longer met fire safety codes for housing bed-ridden patients. Residents were transferred to the new Good Samaritan Nursing Home, and the Infirmary was turned over to the U.S. Forest Service (USFS) for use as the Wallace Ranger Station and Coeur d’Alene River Ranger District.⁵⁷ The USFS occupied the building until 2006, when the Coeur d’Alene River Ranger District offices were moved to Smelterville.⁵⁸

Memorial Hall, the former Isolation Hospital, continued to house community events such as parties, dances, community organization meetings, and Veterans Day commemorations from 1931 through the late 1990s, as described in multiple newspaper notices and accounts. The building was proposed (but never developed) as a tuberculosis hospital in 1949. The Idaho State Guard used Memorial Hall for regular gatherings and used a room in the basement for an armory between 1942 and ca. 1946.⁵⁹ Its most consistent use beyond weekly dances was housing the Opportunity School (1956–1982). The Opportunity School educated children and adults with intellectual or cognitive disabilities ages three-and-a-half to twenty-seven years old and was funded by local school districts and charities.⁶⁰ In 1980, the Silver Valley Transitional Employment Services for the Handicapped (TESH) program was created, sharing space in Memorial Hall with the Opportunity School. Students from the Opportunity School were transitioned into public school districts in the Silver Valley in 1982, and TESH moved out of Memorial Hall to a new location in Wallace in 1985.⁶¹ Newspaper accounts report that charity rummage sales and community organization and church meetings were held in Memorial Hall through 1996. A private owner purchased the building from Shoshone County in 2008.

Summary

Under the MPD Metal Mining in Idaho, the Shoshone County Poor Farm is significant under NRHP Criteria A, in the area of Mining Settlements, Housing, and Community Facilities, subtypes Housing and Community Facilities, and C, architecture. The Poor Farm provided critical care for those made vulnerable by mining and the mining economy, supported the social

⁵⁶ “Commissioners Praised for Infirmary Job,” *Shoshone News-Press* (Kellogg, ID), December 5, 1958, 1, <https://www.newspapers.com/image/1070313191/>.

⁵⁷ “County Now a Landlord,” *Shoshone News-Press* (Kellogg, ID), September 27, 1974, 1, <https://www.newspapers.com/image/1070137574/>.

⁵⁸ “US Forest Service Relocates After 30 Years,” *Shoshone News-Press* (Kellogg, ID), March 31, 2006, 102, <https://www.newspapers.com/image/1069345708/>.

⁵⁹ “Local Guard Unit Last in County,” *Shoshone News-Press* (Kellogg, ID), January 22, 1946, 1, <https://www.newspapers.com/image/1111959542/>.

⁶⁰ “SCARC School Begins Season,” *Shoshone News-Press* (Kellogg, ID), September 5, 1962, 2, <https://www.newspapers.com/image/1070249193/>.

⁶¹ Rebecca Rauve, “TESH Celebrates 10th Birthday,” *Shoshone News-Press* (Kellogg, ID), August 17, 1990, 1, <https://www.newspapers.com/image/1068576311/>.

Shoshone County Poor Farm

Shoshone, Idaho

Name of Property

County and State

life of the Silver Valley community, and is a notable example of Craftsman design in an institutional setting in Idaho.

The Shoshone County Poor Farm is a mining-related resource that was constructed, operated, and achieved its significance between 1860 and 1977. It has a direct and significant association with metal mining, is located in the state of Idaho, and retains sufficient integrity to convey that significance.

DRAFT

Shoshone County Poor Farm
Name of Property

Shoshone, Idaho
County and State

9. Major Bibliographical References

Sources

- Axline, Jon. "National Register of Historic Places Nomination form for the Point of Rocks Historic Transportation Corridor." 2009. On file at the Montana Department of Transportation, Helena.
- Burk-Hise, Kathryn, and Samantha Thiel. National Register of Historic Places Multiple Property Documentation form for Metal Mining in Idaho." Historical Research Associates, Inc. Spokane, Washington. Prepared for the National Park Service, Washington, DC, 2024.
- Denfield, Duane Colt. "Fort Lewis: Red Shield Inn (Fort Lewis Museum)." HistoryLink Essay 9647, May 8, 2011. <https://www.historylink.org/File/9647>.
- Hansan, John E. "Poor Relief in Early America," Virginia Commonwealth University Libraries Social Welfare History Project, 2012. <https://socialwelfare.library.vcu.edu/programs/poor-relief-early-amer/>.
- Houser, Michael, "Archibald G. Rigg." Accessed September 10, 2024. <https://dahp.wa.gov/historic-preservation/research-and-technical-preservation-guidance/architect-biographies/bio-for-archibald-g-rigg>.
- Idaho State Historical Society. *Poor Law Legislation*, Reference Series #151.
- Jones, Edward Gardner. *The Oregonian's Handbook of the Pacific Northwest*. Portland: The Oregonian Publishing Co., 1894.
- Katz, Michael B. *In the Shadow of the Poorhouse: A Social History of Welfare in America*. New York: Basic Books, 1996.
- Magnuson, Richard G. *Coeur d'Alene Diary: The First Ten Years of Hardrock Mining in North Idaho*. Portland, OR: Metropolitan Press, 1968.
- Mullan, Captain John C. *Report on the Construction of a Military Road from Fort Walla-Walla to Fort Benton*. Washington, DC: Government Printing Office, 1863.
- National Park Service. *National Register Bulletin 15: How to Apply the National Register Criteria for Evaluation*. Washington, DC: U.S. Department of the Interior, 1995.
- Noble, Jr., Bruce J., and Robert Spude. *National Register Bulletin 42: Guidelines for Identifying, Evaluating, and Registering Historic Mining Properties*. Washington, DC: National Park Service, 1992.

Shoshone County Poor Farm
Name of Property

Shoshone, Idaho
County and State

Pacific Coast Architecture Database. "Archibald Grant Rigg." Seattle: University of Washington, 2024. <https://pcad.lib.washington.edu/person/6945/>.

Rothman, David J. *The Discovery of the Asylum: Social Order and Disorder in the New Republic*. Boston, MA: Little, Brown and Company, 1971.

Schwantes, Carlos A. *In Mountain Shadows: A History of Idaho*. Lincoln: University of Nebraska Press, 1991.

Shallat, Todd, and Namany Asmussen. "Farming the Poor." *The Blue Review* (Boise, ID), May 13, 2016. <https://www.boisestate.edu/bluereview/ada-county-poor-farm/>.

Sims, Cort. "National Register of Historic Places Registration form for Mullan Road." 1990. On file at Idaho State Historical Society, Boise.

Smith, Robert Wayne. *The Coeur d'Alene Mining War of 1892*. Corvallis: Oregon State University Press, 1961.

U.S. Bureau of the Census. "Fourteenth Census of the United States: 1920 – Population. Shoshone County, Idaho, Wallace No. 1 Precinct, Shoshone County Infirmary." <https://historicshoshonecountyinfirmary.wordpress.com/infirmary-census-records/#jp-carousel-1045>.

_____. "Fifteenth Census of the United States: 1930 – Population. Shoshone County, Idaho, Wallace No. 1 Precinct, Shoshone County Infirmary." <https://historicshoshonecountyinfirmary.wordpress.com/infirmary-census-records/#jp-carousel-1048>.

_____. "Sixteenth Census of the United States: 1940 – Population. Shoshone County, Idaho, Wallace No. 1 Precinct, Shoshone County Infirmary." <https://historicshoshonecountyinfirmary.wordpress.com/infirmary-census-records/#jp-carousel-1051>.

Wagner, David. *The Poorhouse: America's Forgotten Institution*. Lanham, MD: Rowman & Littlefield Publishers, Inc., 2005.

Walker, Jr., Deward E. *American Indians of Idaho*. Moscow: University of Idaho Press, 1971.

Shoshone County Poor Farm
Name of Property

Shoshone, Idaho
County and State

Previous documentation on file (NPS):

- preliminary determination of individual listing (36 CFR 67) has been requested
- previously listed in the National Register
- X previously determined eligible by the National Register
- designated a National Historic Landmark
- recorded by Historic American Buildings Survey # _____
- recorded by Historic American Engineering Record # _____
- recorded by Historic American Landscape Survey # _____

Primary location of additional data:

- State Historic Preservation Office
- Other State agency
- Federal agency
- Local government
- University
- Other
- Name of repository: _____

Historic Resources Survey Number (if assigned): _____

10. Geographical Data

Acreage of Property 4.69 acres

Use either the UTM system or latitude/longitude coordinates

Latitude/Longitude Coordinates

Datum if other than WGS84: _____

(enter coordinates to 6 decimal places)

- | | |
|--------------------------|-------------------------|
| 1. Latitude: 47.493474N | Longitude: -115.957967W |
| 2. Latitude: 47.494205N | Longitude: -115.957969W |
| 3. Latitude: 47.494426N | Longitude: -115.958387W |
| 4. Latitude: 47.494568N | Longitude: -115.958388W |
| 5. Latitude: 47.494567N | Longitude: -115.958837W |
| 6. Latitude: 47.494471N | Longitude: -115.959164W |
| 7. Latitude: 47.494492N | Longitude: -115.959756W |
| 8. Latitude: 47.495048N | Longitude: -115.959758W |
| 9. Latitude: 47.495569N | Longitude: -115.960250W |
| 10. Latitude: 47.496042N | Longitude: -115.959238W |

Shoshone County Poor Farm

Shoshone, Idaho

Name of Property

County and State

- | | |
|---------------------------|-------------------------|
| 11. Latitude: 47.495309N | Longitude: -115.959056W |
| 12. Latitude: 47.494796N | Longitude: -115.959053W |
| 13. Latitude: 47.494747N | Longitude: -115.958496W |
| 14. Latitude: 47.494905N, | Longitude: -115.958323W |
| 15. Latitude: 47.494803N | Longitude: -115.957973W |
| 16. Latitude: 47.494064N | Longitude: -115.956976W |
| 17. Latitude: 47.493475N | Longitude: -115.957019W |

Or

UTM References

Datum (indicated on USGS map):

NAD 1927 or NAD 1983

- | | | |
|----------|-----------|-----------|
| 1. Zone: | Easting: | Northing: |
| 2. Zone: | Easting: | Northing: |
| 3. Zone: | Easting: | Northing: |
| 4. Zone: | Easting : | Northing: |

Verbal Boundary Description (Describe the boundaries of the property.)

The property boundaries include the three parcels upon which the Infirmary, Isolation Hospital, and Steam Plant buildings are located. These are: Shoshone County Parcel RPO29050000040 (2 acres), known as 99 Satherfield Road, Silverton, Idaho, 83867; Parcel RPO 29050000060 (0.65 acres), known as 179 Satherfield Road, Silverton, Idaho, 83867; and Parcel RPO29050000080 (2.04 acres), known as 224 Satherfield Road, Silverton, Idaho, 83867. Parcel RPO29050000040 is bounded by Satherfield Road on the eastern and northern sides, and adjacent parcels on the western and southern sides. RPO 29050000060 is bounded by Satherfield Road on the northern side and adjacent parcels on the western, southern, and eastern sides. Parcel RPO29050000080 is bounded by Satherfield Road on the southern side, and adjacent parcels on its western, northern, and eastern sides.

Boundary Justification (Explain why the boundaries were selected.)

The acreage of the Shoshone County Poor Farm has varied over the years from approximately 45 acres to when the property was divided into multiple, separate parcels. The County sold the two parcels containing the Infirmary and Isolation Hospital in the 2000s. The nominated boundaries comprise three parcels that contain the extant Poor Farm buildings, including the Infirmary, Isolation Hospital (Memorial Hall), and Steam Plant.

Shoshone County Poor Farm
Name of Property

Shoshone, Idaho
County and State

11. Form Prepared By

name/title: Kathleen Durham and Natalie K. Perrin, with research assistance from Brooke Best
organization: Historical Research Associates, Inc.
street & number: 9750 Third Ave. NE, Suite 102
city or town: Seattle state: WA zip code: 98115
e-mail kdurham@hrassoc.com
telephone: 206-343-0226
date: November 15, 2024

Additional Documentation

Submit the following items with the completed form:

- **Maps:** A **USGS map** or equivalent (7.5 or 15 minute series) indicating the property's location.
- **Sketch map** for historic districts and properties having large acreage or numerous resources. Key all photographs to this map.
- **Additional items:** (Check with the SHPO, TPO, or FPO for any additional items.)

The following items are included with the completed form:

- Figure 1: Shoshone County Poor Farm regional location map (state).
- Figure 2: Topographical map showing location of the Shoshone County Poor Farm within the township of Silverton.
- Figure 3: Shoshone County Poor Farm aerial map of historic resources.
- Figure 4: Exterior Photo Key A (Resource 1) Infirmary.
- Figure 5: Exterior Photo Key B (Resource 2) Steam Plant.
- Figure 6: Exterior Photo Key C (Resource 3) Memorial Hall.
- Figure 7: Exterior Photo Key D (Resources 4–13).
- Figure 8: Shoshone County Poor Farm Infirmary first floor sketch and interior photo key.
- Figure 9: Shoshone County Poor Farm Infirmary second floor sketch and interior photo key.
- Figure 10: Shoshone County Poor Farm Infirmary basement sketch and interior photo Key.
- Figure 11: Shoshone County Poor Farm Steam Plant first floor sketch and interior photo key.

Shoshone County Poor Farm
Name of Property

Shoshone, Idaho
County and State

- Figure 12: Shoshone County Poor Farm Steam Plant basement sketch and interior photo key.
- Figure 13: Shoshone County Poor Farm Memorial Hall first floor sketch and interior photo key.
- Figure 14: Shoshone County Poor Farm Memorial Hall basement sketch and interior photo key.
- Figure 15: Shoshone County Poor Farm Infirmary, ca. 1917, south elevation.
- Figure 16: Shoshone County Poor Farm Infirmary, ca. 1918, south and west elevations.
- Figure 17: Shoshone County Poor Farm Steam Plant ca. 1918, south elevation.
- Figure 18: Shoshone County Poor Farm Isolation Hospital, ca. 1918, south and east elevations.
- Figure 19: Shoshone County Poor Farm Memorial Hall and Steam Plant, ca. 1939, south elevations.
- Figure 20: Hammett School, ca. 1911.
- Figure 21: Bethany Deaconess Hospital, American Falls, built 1926. Power County Historical Society. Date unknown.
- Figure 22: Children's Home Funding and Aid Society Building, 740 E. Warm Springs Avenue, Boise, Idaho.

DRAFT

Shoshone County Poor Farm
 Name of Property

Shoshone, Idaho
 County and State

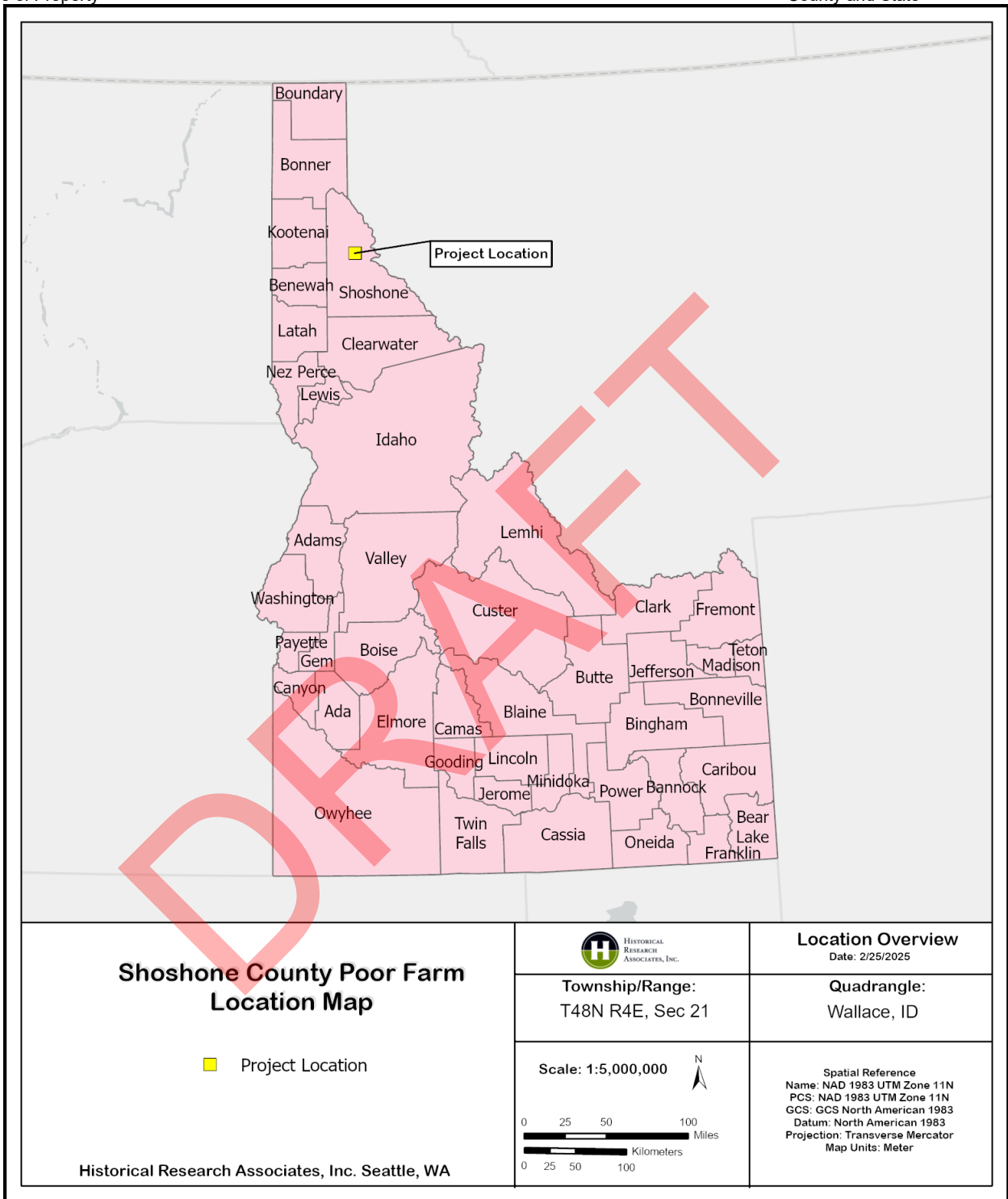


Figure 1. Shoshone County Poor Farm regional location map (state).

Shoshone County Poor Farm
 Name of Property

Shoshone, Idaho
 County and State

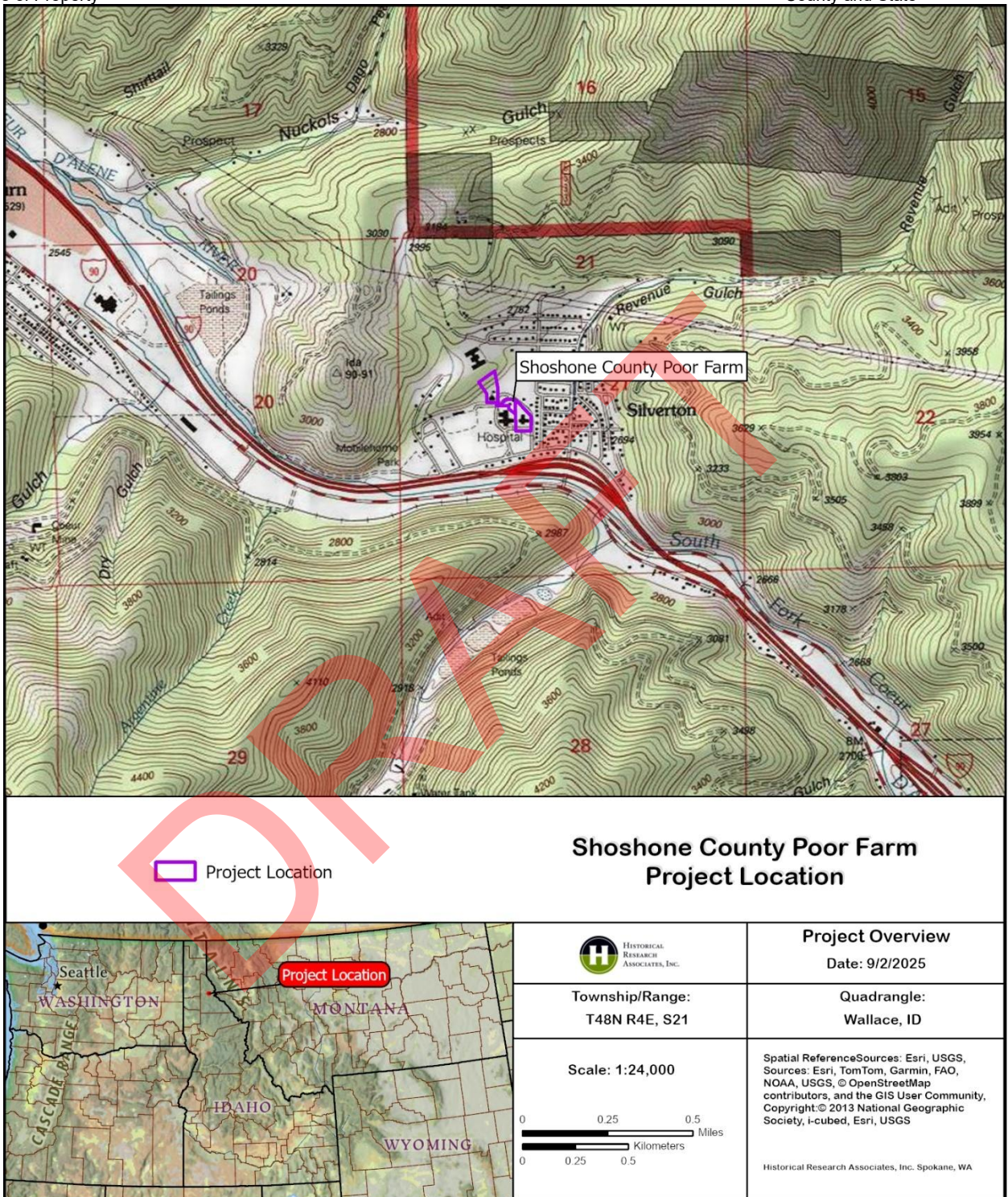


Figure 2. Topographical map showing location of the Shoshone County Poor Farm within the township of Silverton.

Shoshone County Poor Farm
 Name of Property

Shoshone, Idaho
 County and State

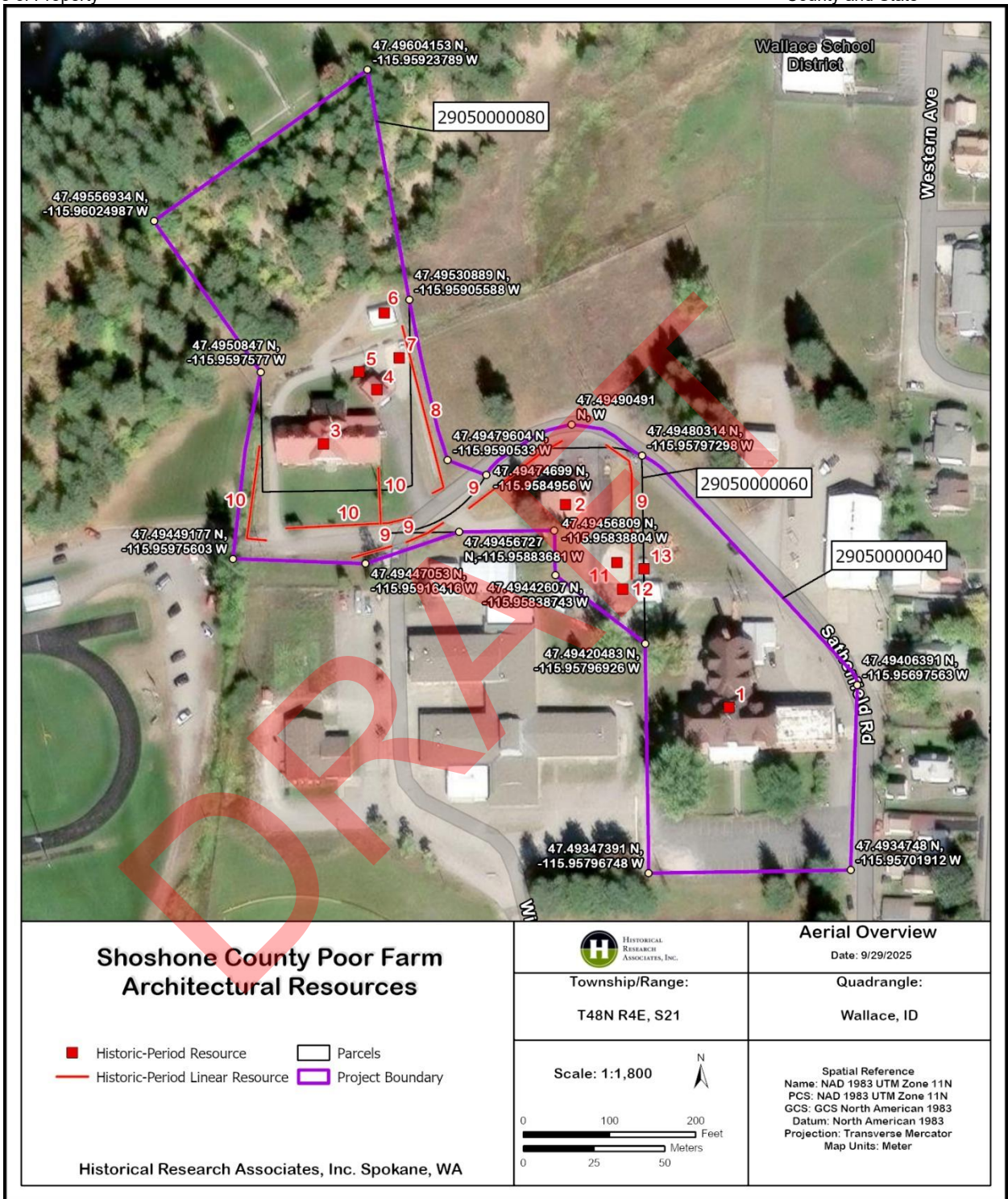


Figure 3. Shoshone County Poor Farm aerial map of historic resources.

Shoshone County Poor Farm
Name of Property

Shoshone, Idaho
County and State

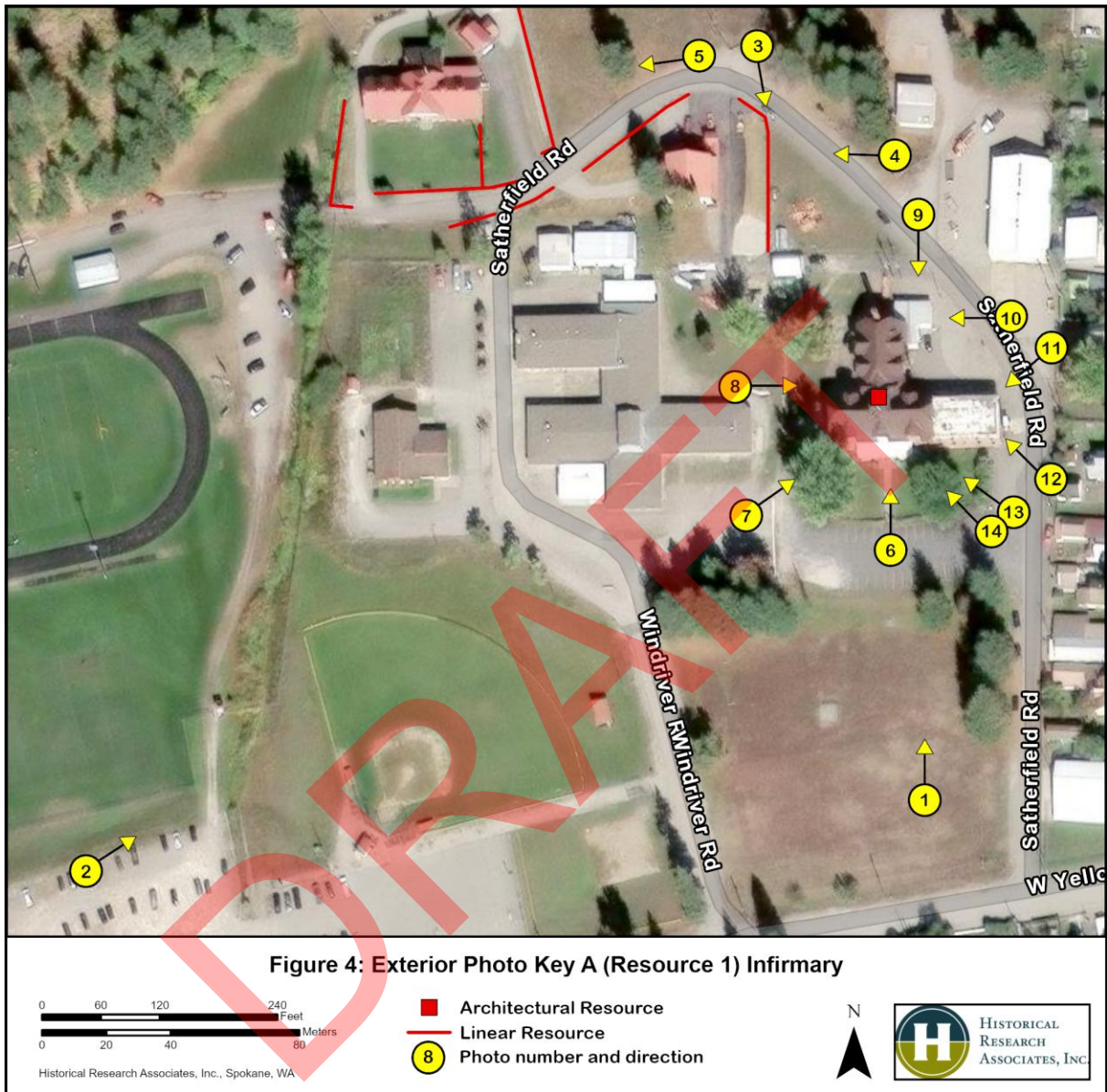


Figure 4. Exterior Photo Key A (Resource 1) Infirmary.

Shoshone County Poor Farm
Name of Property

Shoshone, Idaho
County and State

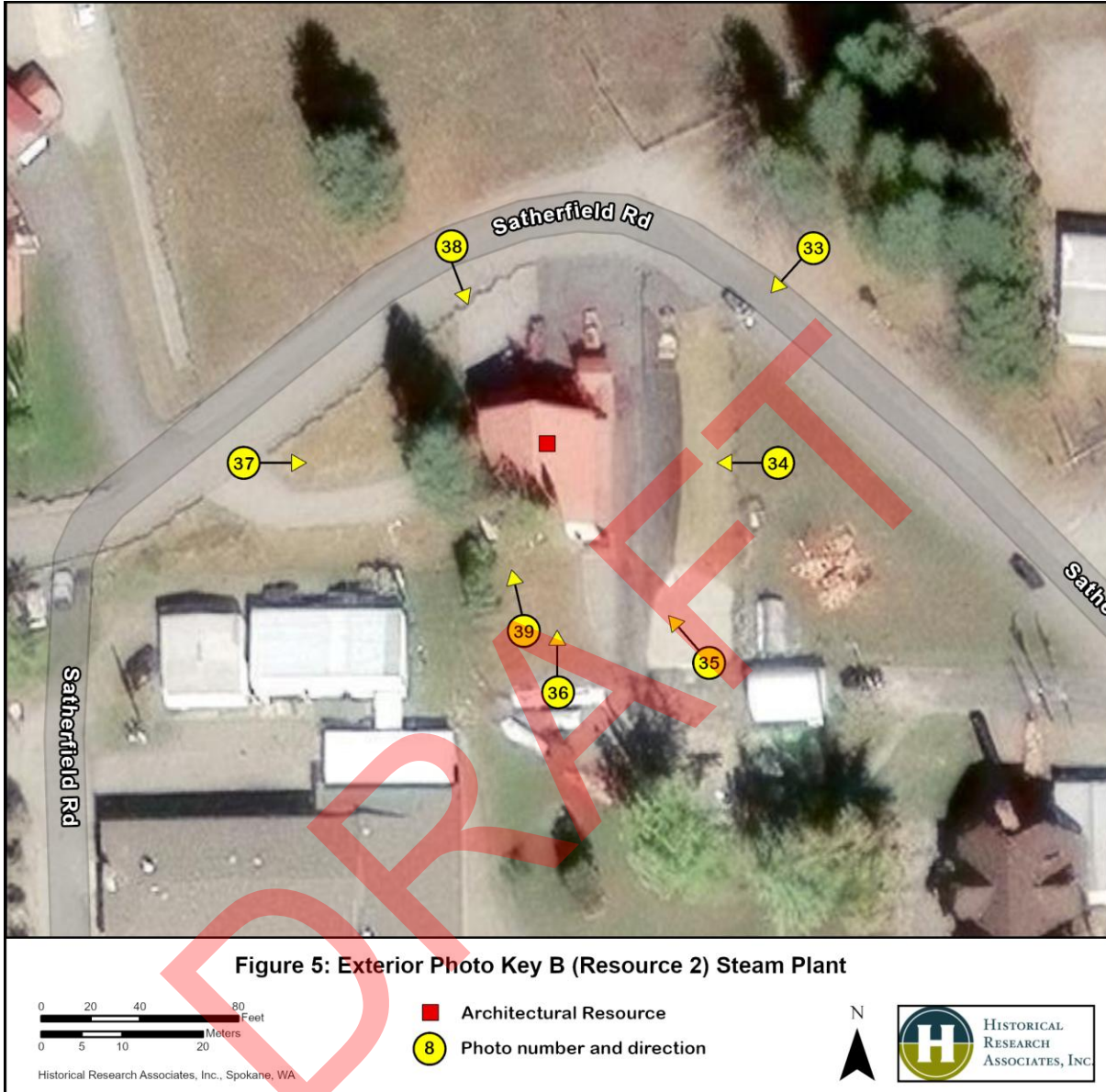


Figure 5. Exterior Photo Key B (Resource 2) Steam Plant.

Shoshone County Poor Farm
Name of Property

Shoshone, Idaho
County and State

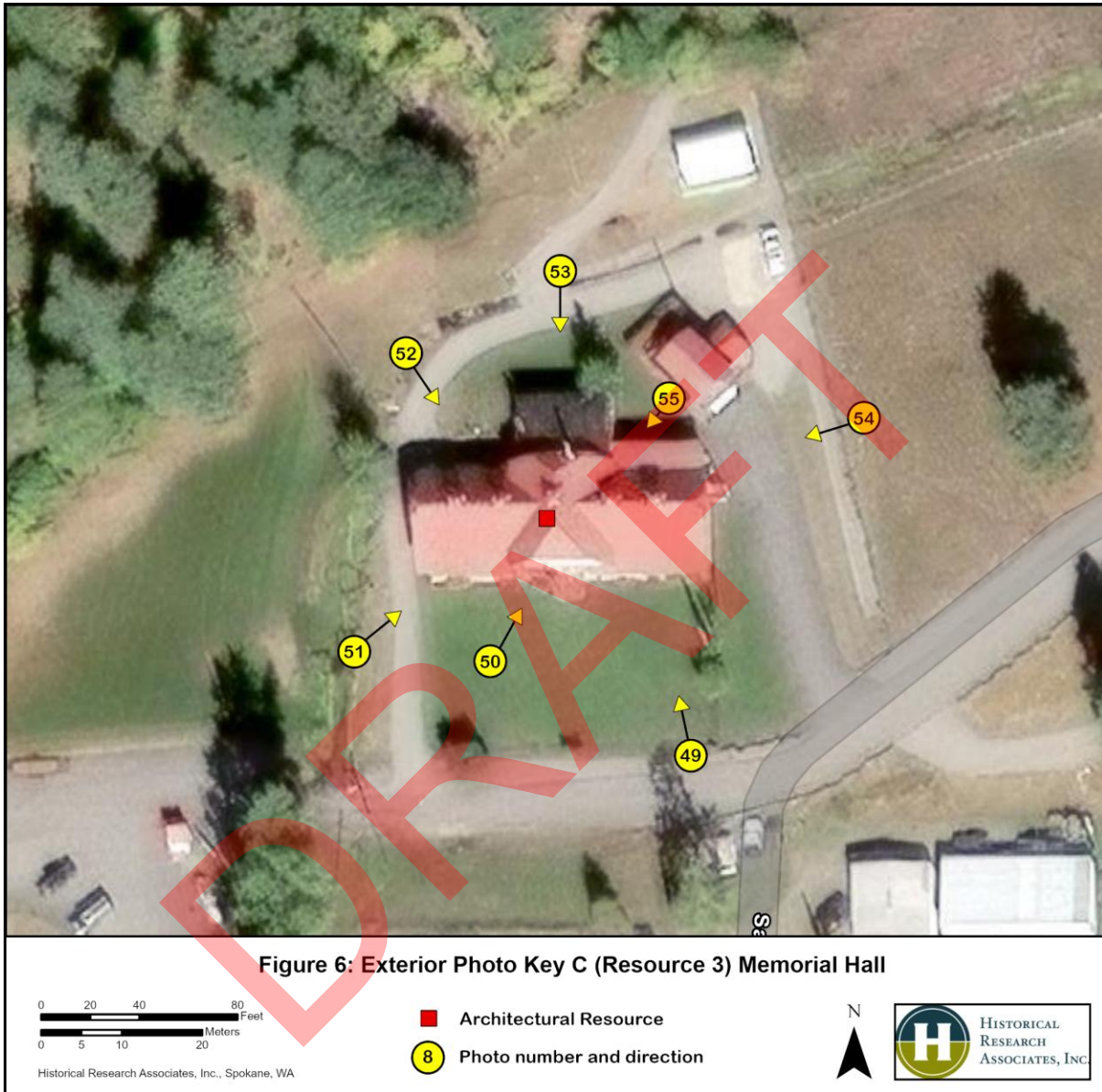


Figure 6. Exterior Photo Key C (Resource 3) Memorial Hall.

Shoshone County Poor Farm
Name of Property

Shoshone, Idaho
County and State

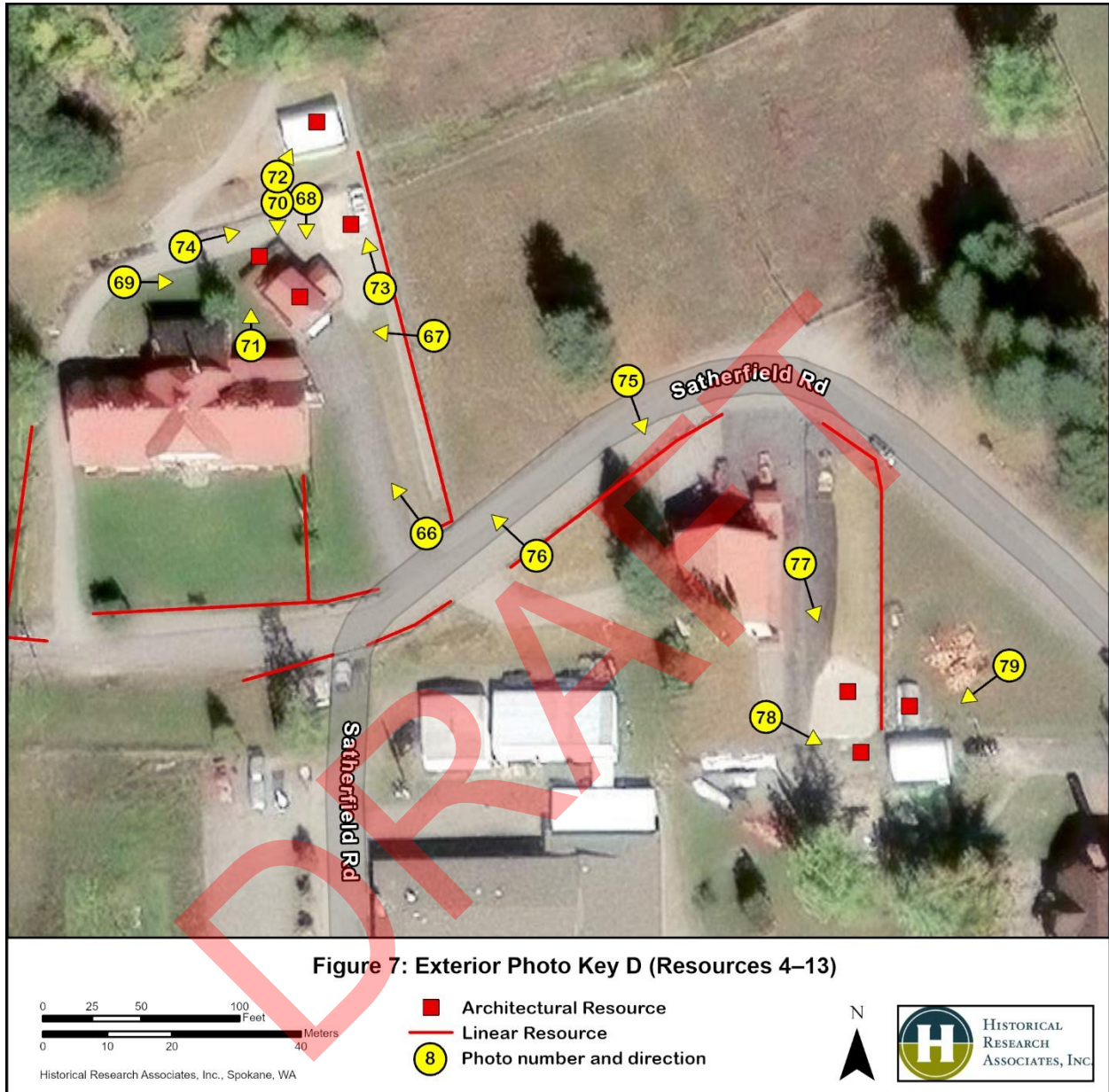


Figure 7. Exterior Photo Key D (Resources 4–13).

Shoshone County Poor Farm
Name of Property

Shoshone, Idaho
County and State

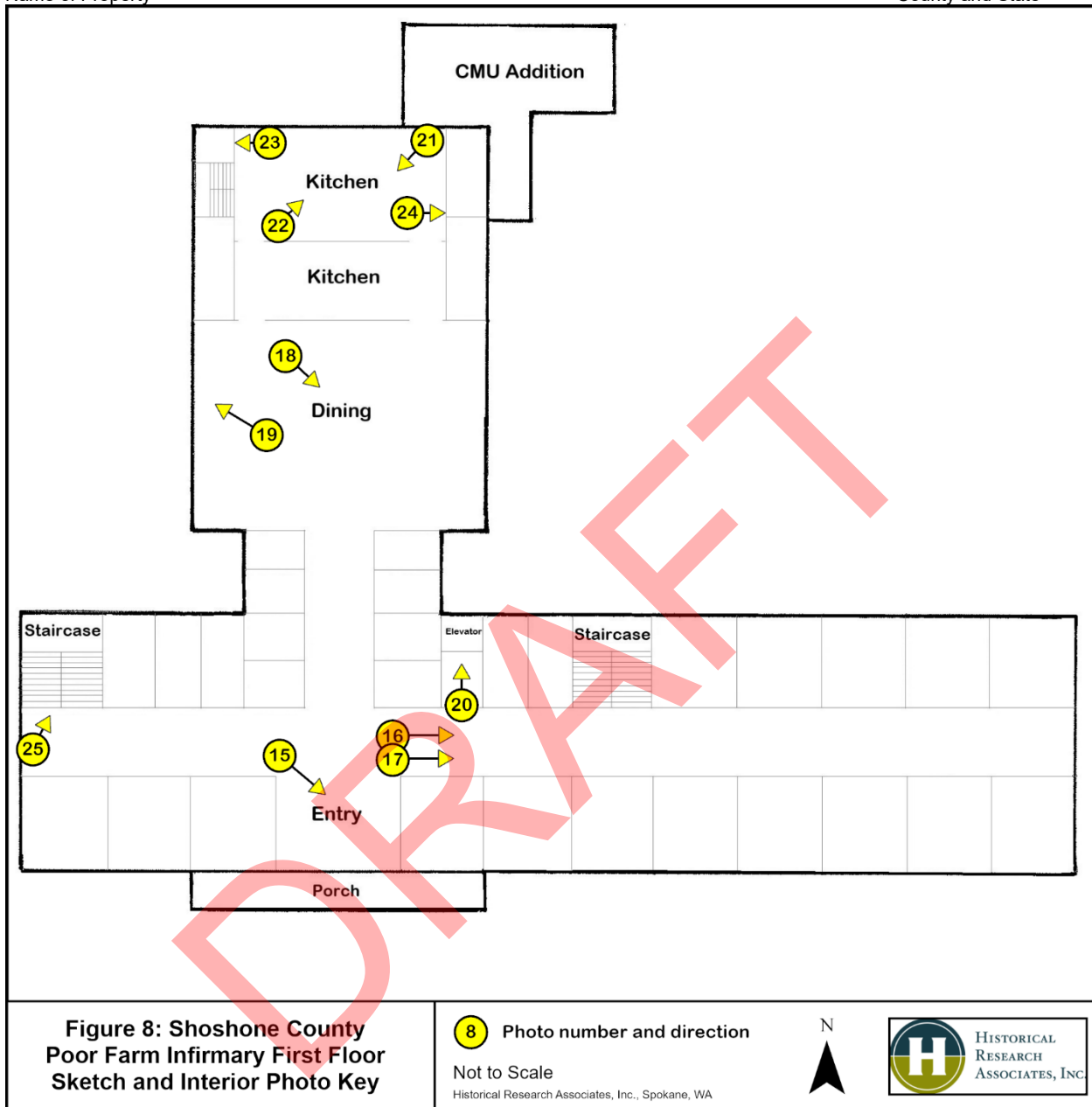


Figure 8. Shoshone County Poor Farm Infirmary first floor sketch and interior photo key.

Shoshone County Poor Farm
Name of Property

Shoshone, Idaho
County and State

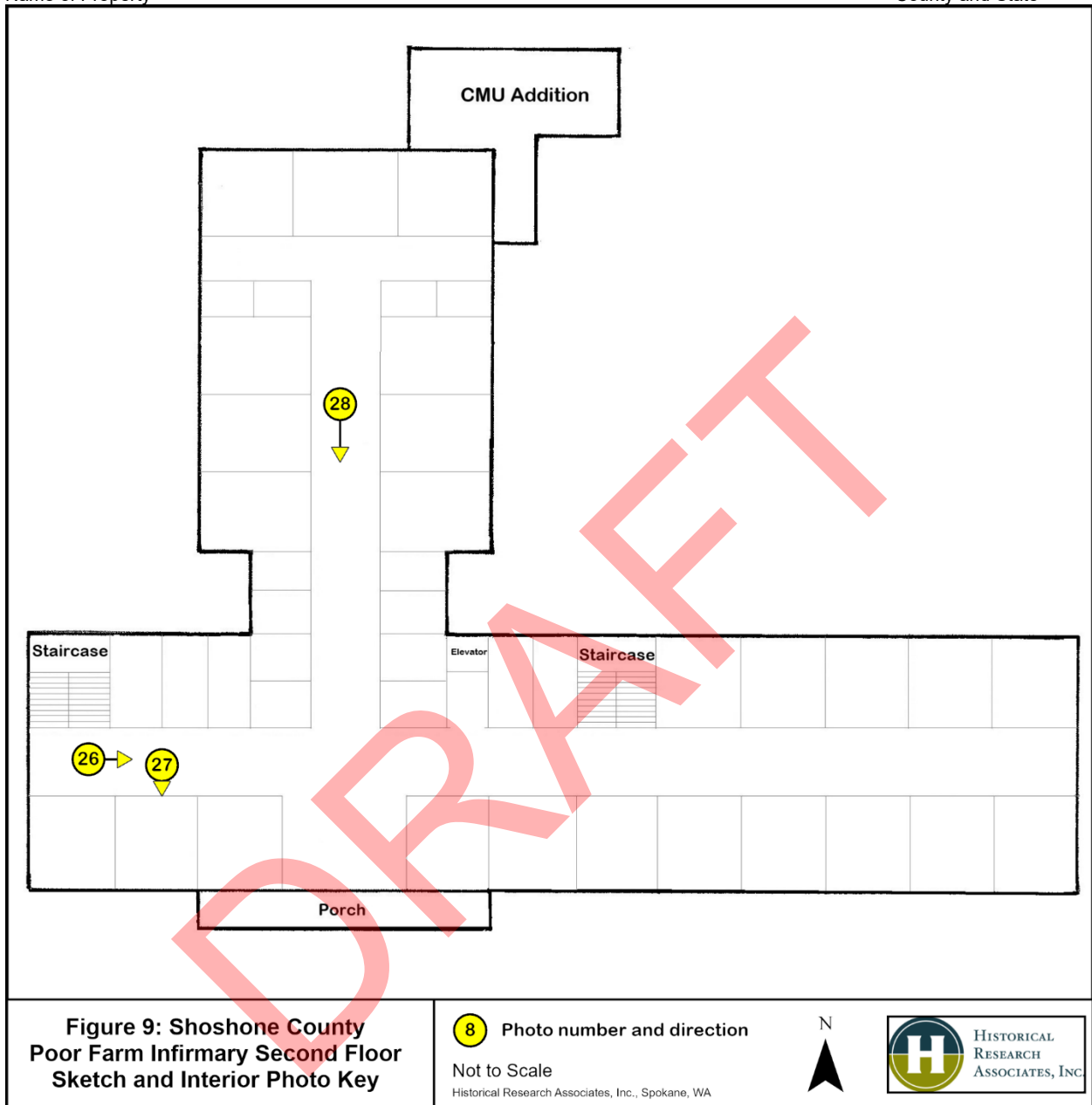


Figure 9. Shoshone County Poor Farm Infirmary second floor sketch and interior photo key.

Shoshone County Poor Farm
Name of Property

Shoshone, Idaho
County and State

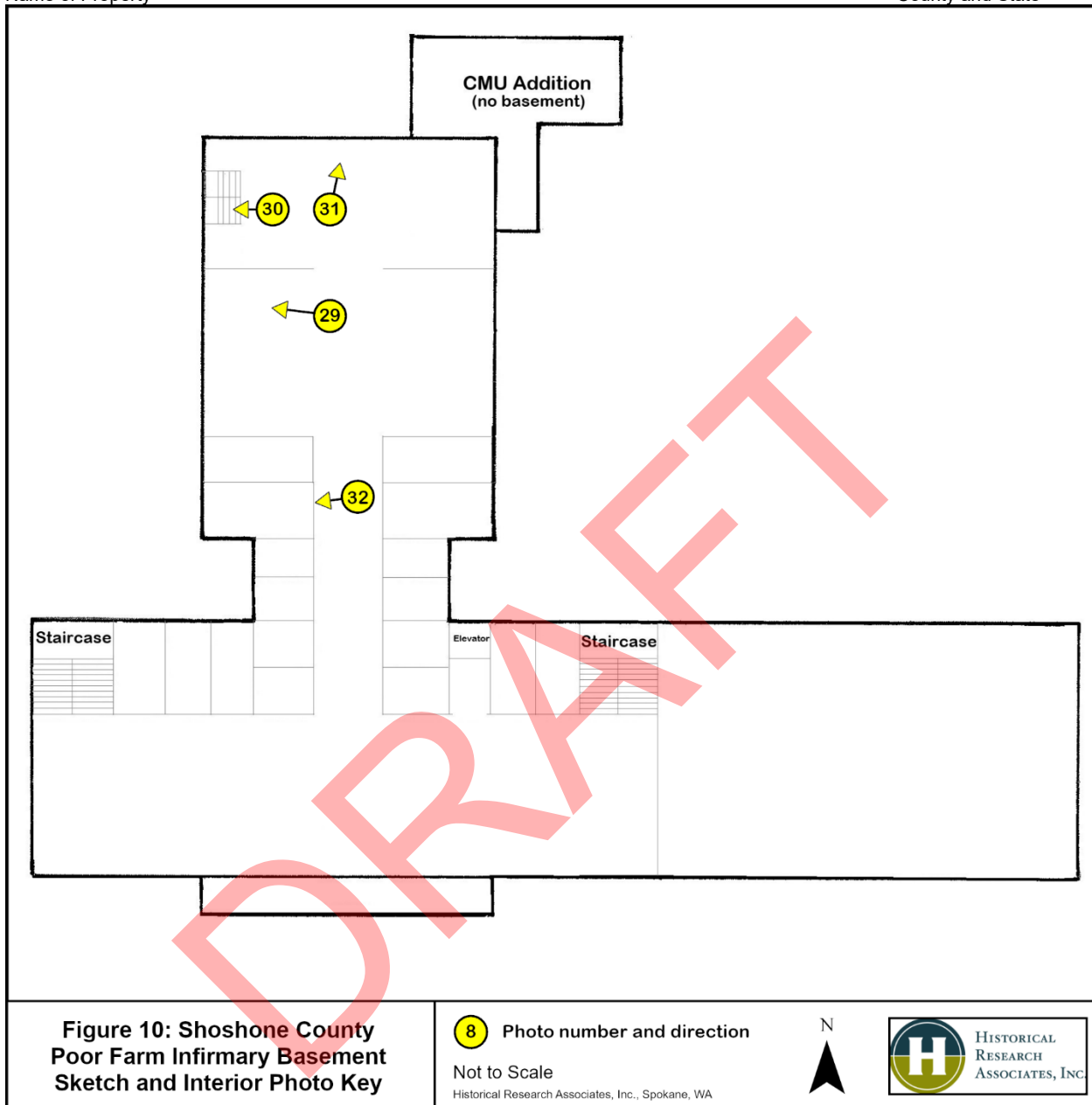


Figure 10. Shoshone County Poor Farm Infirmary basement sketch and interior photo key

Shoshone County Poor Farm
Name of Property

Shoshone, Idaho
County and State

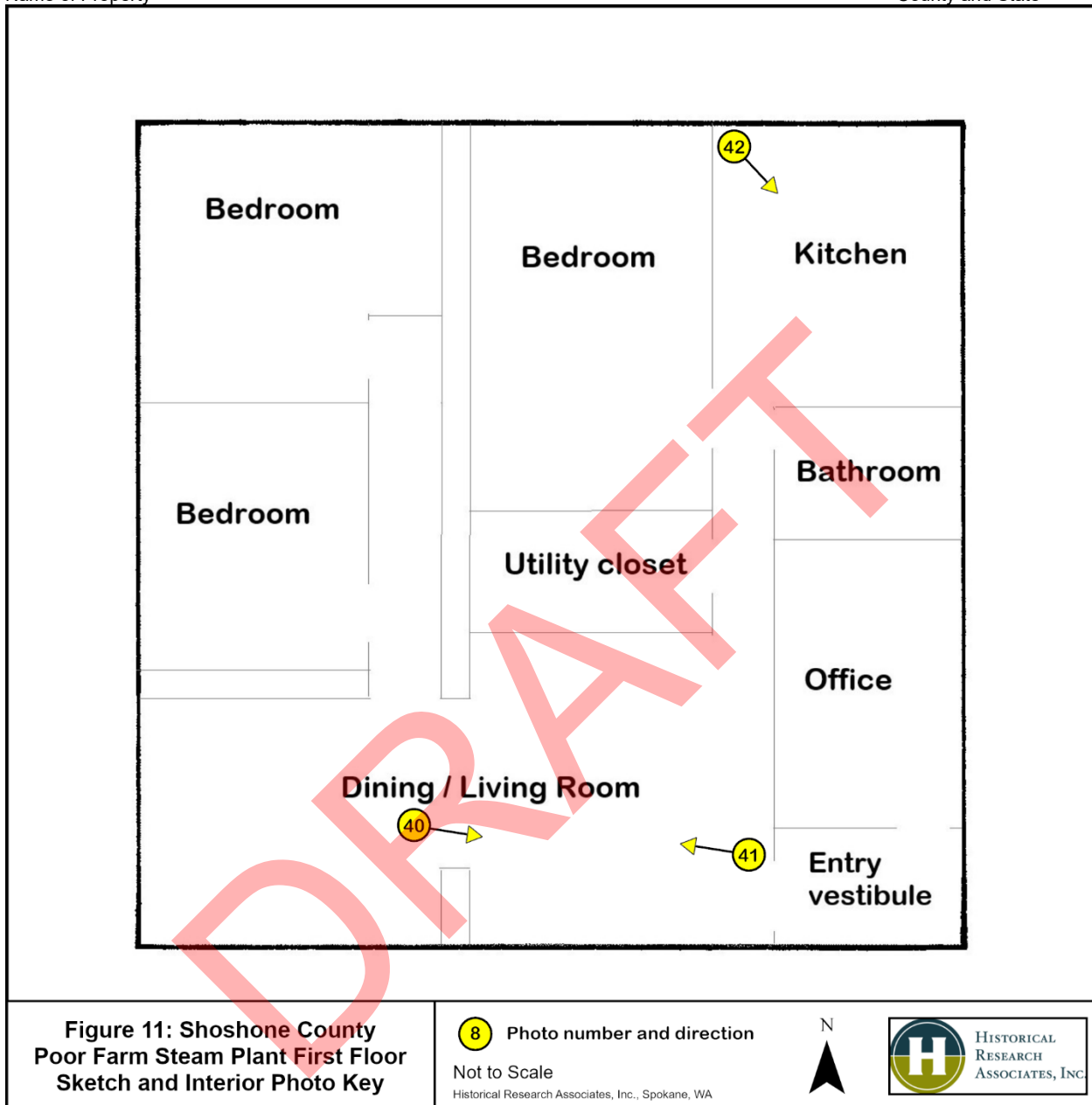


Figure 11. Shoshone County Poor Farm Steam Plant first floor sketch and interior photo key.

Shoshone County Poor Farm
Name of Property

Shoshone, Idaho
County and State

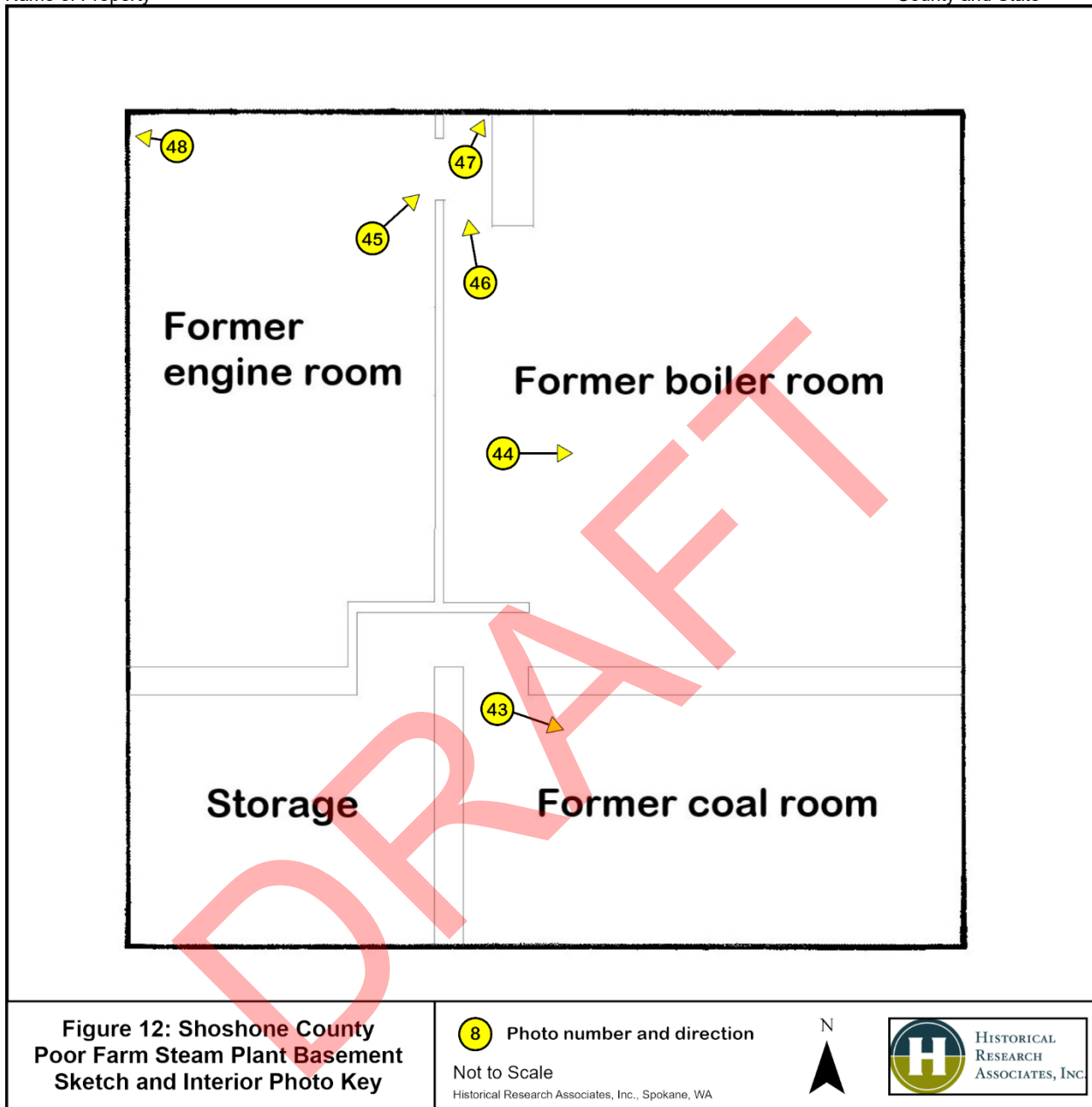


Figure 12. Shoshone County Poor Farm Steam Plant basement sketch and interior photo key.

Shoshone County Poor Farm
Name of Property

Shoshone, Idaho
County and State

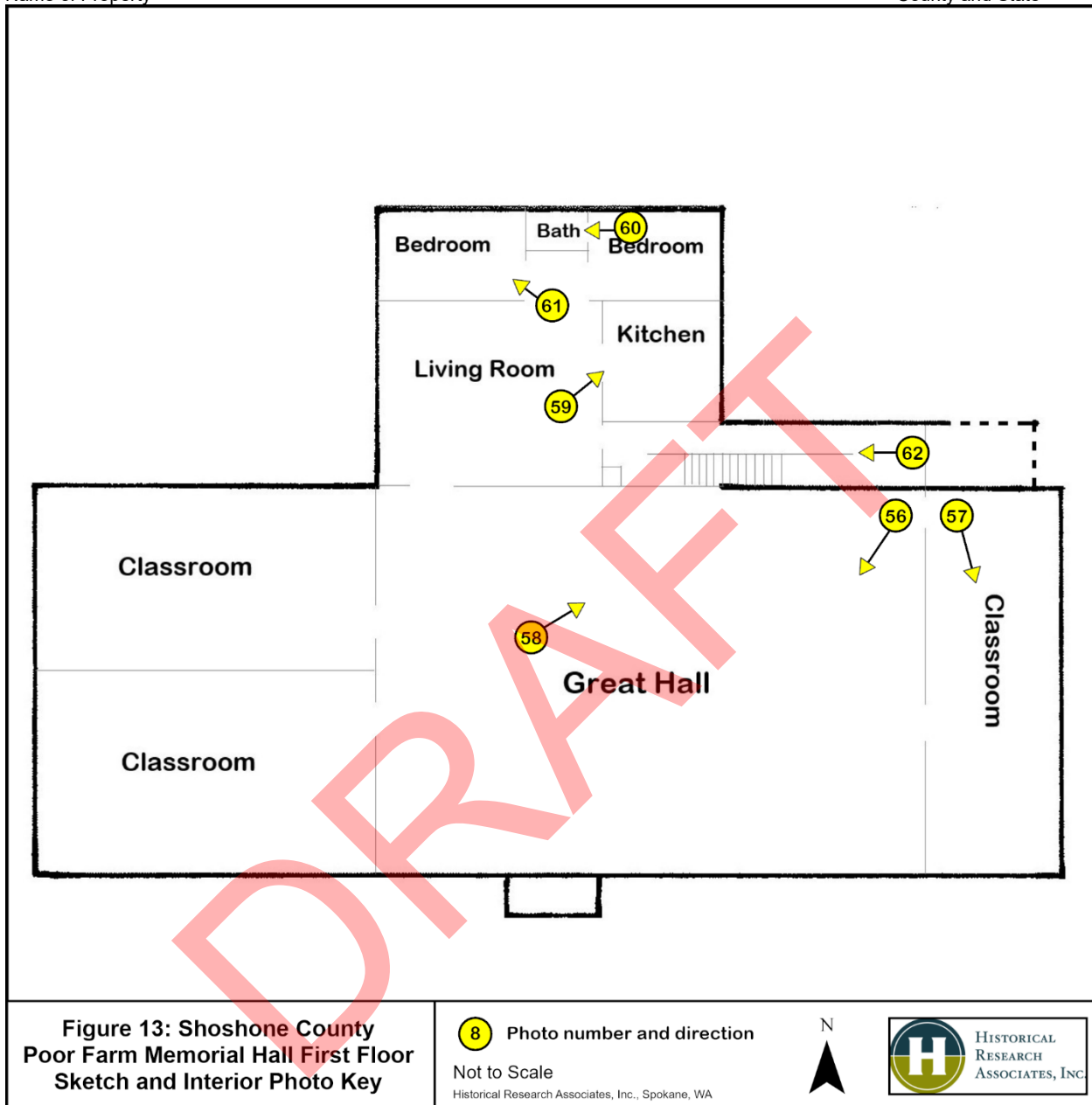


Figure 13. Shoshone County Poor Farm Memorial Hall first floor sketch and interior photo key.

Shoshone County Poor Farm
Name of Property

Shoshone, Idaho
County and State

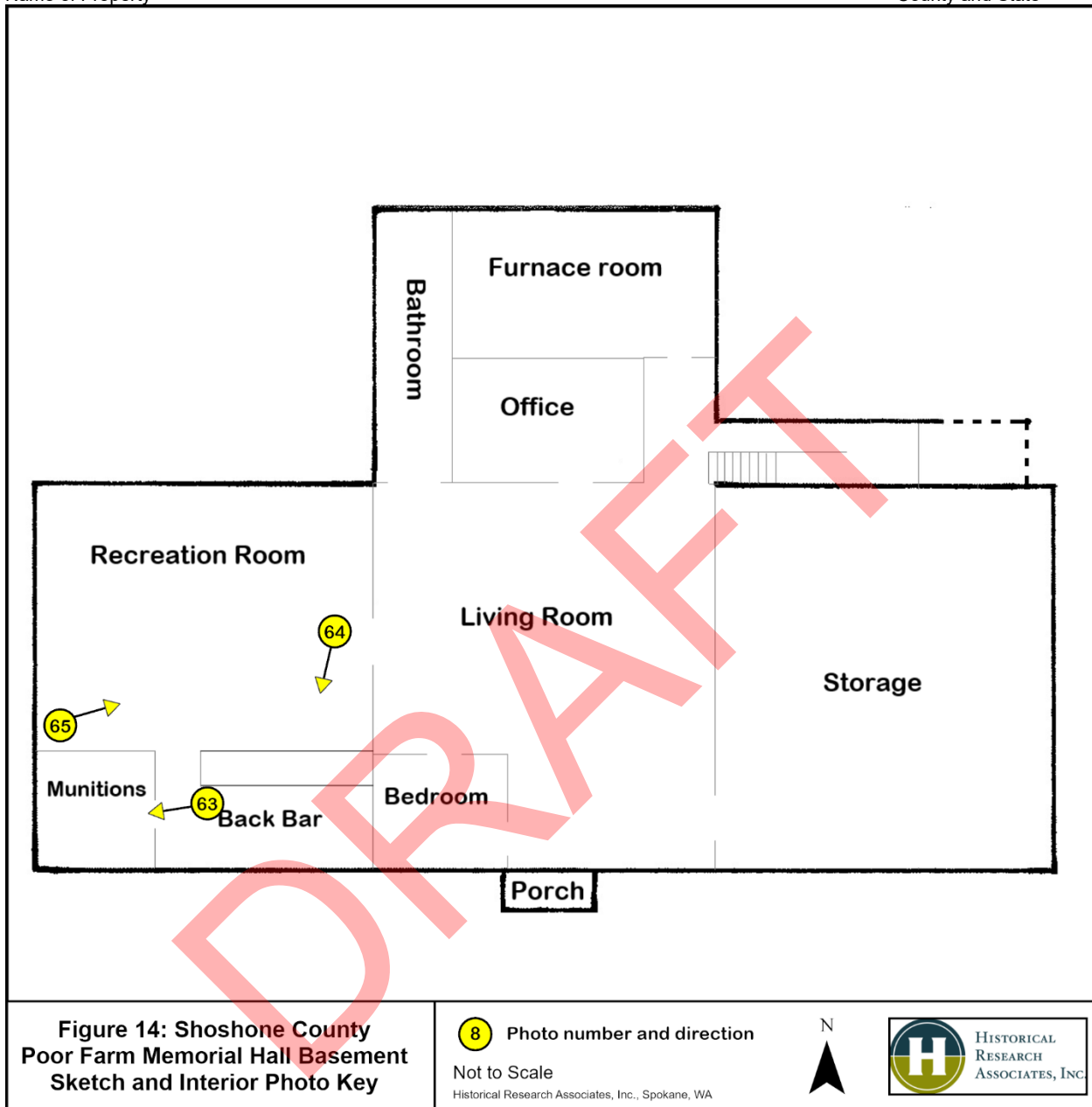


Figure 14. Shoshone County Poor Farm Memorial Hall basement sketch and interior photo key.

Shoshone County Poor Farm
Name of Property

Shoshone, Idaho
County and State



Figure 15. Shoshone County Poor Farm Infirmary, ca. 1917, south elevation, view north. Barnard-Stockbridge photograph collection, 1894–1964, PG 8-2, University of Idaho Library Special Collections and Archives.



Figure 16. Shoshone County Poor Farm Infirmary, ca. 1918, south and west elevations, view northeast. Barnard-Stockbridge photograph collection, 1894–1964, PG 8-2, University of Idaho Library Special Collections and Archives.

Shoshone County Poor Farm
Name of Property

Shoshone, Idaho
County and State

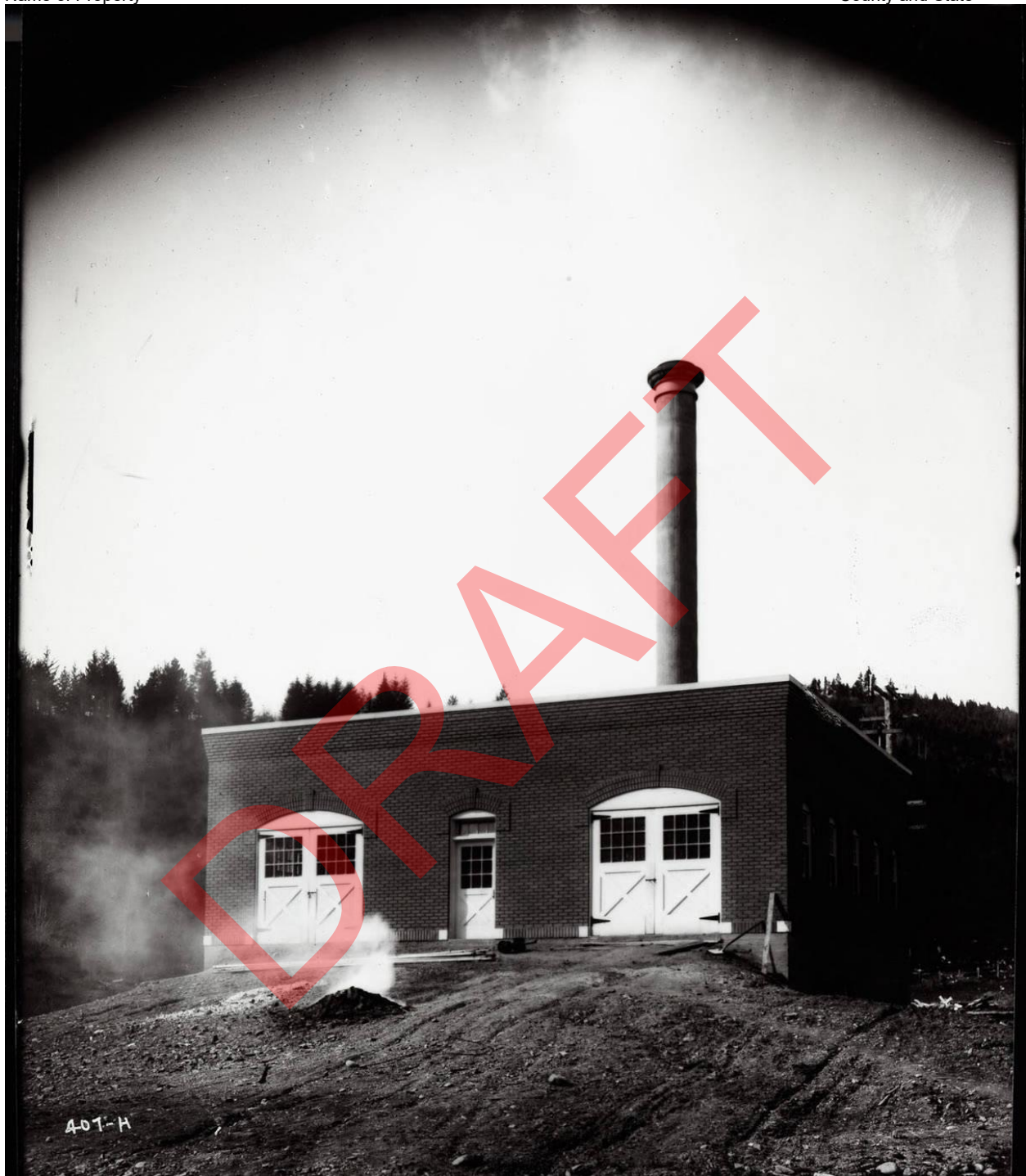


Figure 17. Shoshone County Poor Farm Steam Plant, ca. 1918, south and east elevations. Barnard-Stockbridge photograph collection, 1894–1964, PG 8-2, University of Idaho Library Special Collections and Archives.

Shoshone County Poor Farm
Name of Property

Shoshone, Idaho
County and State



Figure 18. Shoshone County Poor Farm Isolation Hospital, ca. 1918. Barnard-Stockbridge photograph collection, 1894–1964, PG 8-2, University of Idaho Library Special Collections and Archives.

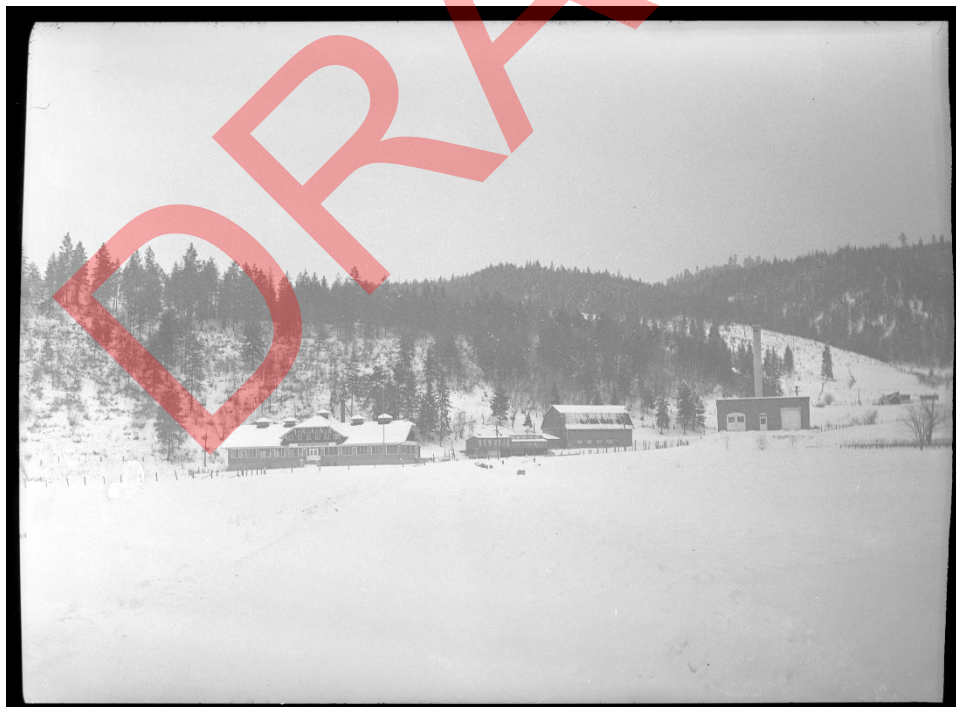


Figure 19. Shoshone County Poor Farm Memorial Hall (*left*) and Steam Plant (with smokestack, *right*), south elevations, ca. 1939. “Silverton, Idaho in the snow [05],” George W. Tabor Photographs, University of Idaho Library Digital Collections.

Shoshone County Poor Farm
Name of Property

Shoshone, Idaho
County and State



Figure 20. Hammett School, ca. 1911. *Idaho Daily Statesman* (Boise, ID), October 10, 1911, 3.



Figure 21. Bethany Deaconess Hospital, American Falls, built 1926. Power County Historical Society.
Date unknown.

Shoshone County Poor Farm
Name of Property

Shoshone, Idaho
County and State



Figure 22. Children's Home Funding and Aid Society Building. David Kramer, 2013,
<https://www.thecraftsmanbungalow.com/boise-bungalows/>.

DRAFT

Shoshone County Poor Farm
Name of Property

Shoshone, Idaho
County and State

Photographs (See Continuation Sheet)

Submit clear and descriptive photographs. The size of each image must be 1600x1200 pixels (minimum), 3000x2000 preferred, at 300 ppi (pixels per inch) or larger. Key all photographs to the sketch map. Each photograph must be numbered and that number must correspond to the photograph number on the photo log. For simplicity, the name of the photographer, photo date, etc. may be listed once on the photograph log and doesn't need to be labeled on every photograph.

Photo Log

Name of Property: Shoshone County Poor Farm (Memorial Hall)

City or Vicinity: Silverton

County: Shoshone

State: Idaho

Photographer: Kathryn Burk-Hise, unless otherwise noted in caption.

Date Photographed: September 11, 2024; August 19, 2025.

Photo 1. Shoshone County Poor Farm Infirmary (resource 1) setting, view north, with Silverton Park in foreground. 2025.

Photo 2. Shoshone County Poor Farm setting, view northeast. Infirmary (resource 1) *far right*; Memorial Hall (resource 3) *left of center*. 2025.

Photo 3. Infirmary (resource 1) setting, view southeast. 2025.

Photo 4. Steam Plant (resource 2) setting, view northwest from Infirmary; Memorial Hall in the background. 2025

Photo 5. Memorial Hall (resource 3) setting, view west from Steam Plant. 2025.

Photo 6. Shoshone County Poor Farm Infirmary (resource 1), south elevation (facade), view north. 2024.

Photo 7. Infirmary (resource 1), south and west elevations, view northeast. 2024.

Photo 8. Infirmary (resource 1), west elevation, view east. 2024.

Photo 9. Infirmary (resource 1), north elevation, view south. 2024.

Photo 10. Infirmary (resource 1), east elevation of north wing with CMU addition, view west. 2025.

Photo 11. Infirmary (resource 1), north and east elevations of 1964 wing; partial 1917 wing east elevation, view southwest. 2024.

Photo 12. Infirmary (resource 1), 1964 addition, south and east elevations, view northwest. 2024.

Photo 13. Infirmary (resource 1), central gable and roof cupola detail, south elevation, view northwest. 2024.

Shoshone County Poor Farm
Name of Property

Shoshone, Idaho
County and State

- Photo 14.** Infirmary (resource 1), main entry porch, south elevation, view northwest. 2024.
- Photo 15.** Infirmary (resource 1, now hotel) entry, view southeast. Elizabeth Allison, 2023.
- Photo 16.** Infirmary (resource 1, now hotel) first-floor hallway, view east. Elizabeth Allison, 2023.
- Photo 17.** Infirmary (resource 1) entry, view east. Cindy Nunn, ca. 2021.
- Photo 18.** Infirmary (resource 1, now hotel) dining room, view southeast. Elizabeth Allison, 2023.
- Photo 19.** Infirmary (resource 1) dining room, view northwest. Note original (1917) brick masonry walls, radiator, and windows, view northwest. 2024.
- Photo 20.** Otis elevator in original (1917) Infirmary (resource 1) massing, first floor, view north. 2024.
- Photo 21.** Infirmary (resource 1) kitchen, view southwest. Cindy Nunn, 2021.
- Photo 22.** Infirmary (resource 1) kitchen, view northeast. Cindy Nunn, 2021.
- Photo 23.** Infirmary (resource 1) kitchen, walk-in refrigerator, view northwest. 2024.
- Photo 24.** Infirmary (resource 1), kitchen pantry, view east. 2024.
- Photo 25.** Infirmary (resource 1), western end stairwell, view north. 2024.
- Photo 26.** Infirmary (resource 1), second-floor hallway, view east toward 1964 addition. 2024.
- Photo 27.** Infirmary (resource 1), second-floor patient room, view south. 2024.
- Photo 28.** Infirmary (resource 1), first-floor north-south hallway, view south. 2024.
- Photo 29.** Infirmary (resource 1) laundry room, view west. 2024.
- Photo 30.** Infirmary (resource 1) stairs from first floor to basement, view west 2024.
- Photo 31.** Infirmary (resource 1) basement with Ideal furnace, view north. 2024.
- Photo 32.** Infirmary (resource 1) basement cold storage room, view west. 2024.
- Photo 33.** Steam Plant (resource 2), north and east elevations, view southwest. 2025.
- Photo 34.** Steam Plant (resource 2), east elevation, view west. 2025.
- Photo 35.** Steam Plant (resource 2), east and south elevations, view northwest. 2025.
- Photo 36.** Steam Plant (resource 2), south elevation, view north. 2025.
- Photo 37.** Steam Plant (resource 2), west elevation, view east. 2025.
- Photo 38.** Steam Plant (resource 2), west and north elevations, view southeast. 2025.
- Photo 39.** Steam Plant (resource 2), south elevation, detail of brick cornice. 2025.
- Photo 40.** Steam Plant (resource 2) dining area with pass-through to office, view southeast. 2025.
- Photo 41.** Steam Plant (resource 2) dining and living area, view northwest. 2025.
- Photo 42.** Steam Plant (resource 2) kitchen, view southeast. 2025.
- Photo 43.** Steam Plant (resource 2) former coal room in the basement, view southeast. 2025.
- Photo 44.** Steam Plant (resource 2) basement, concrete beam detail, view east. 2025.

Shoshone County Poor Farm

Shoshone, Idaho

Name of Property

County and State

- Photo 45.** Steam Plant (resource 2) basement, infilled smokestack opening, view northeast. 2025.
- Photo 46.** Steam Plant (resource 2) basement, new CMU interior wall, view north. 2025.
- Photo 47.** Steam Plant (resource 2) basement, steel hatch, view northeast. 2025.
- Photo 48.** Steam Plant (resource 2) basement, equipment elevator remnants, view west. 2025
- Photo 49.** Shoshone County Poor Farm Isolation Hospital (Memorial Hall, resource 3), view northwest. 2024.
- Photo 50.** Memorial Hall (resource 3) main entry detail, view northeast. 2024.
- Photo 51.** Memorial Hall (resource 3), west wing, south and west elevation, view northeast. 2024.
- Photo 52.** Memorial Hall (resource 3), north elevation (*right*) and north wing west elevation (*left*), view southeast. 2025.
- Photo 53.** Memorial Hall (resource 3), north elevation, view south. 2024
- Photo 54.** Memorial Hall (resource 3), east elevation, view west. 2024.
- Photo 55.** Memorial Hall (resource 3), east elevation (*right*) and partial north elevation (*left*), view southwest. 2024.
- Photo 56.** Memorial Hall (resource 3) interior, main floor, view southwest. 2024.
- Photo 57.** Memorial Hall (resource 3) interior, west wing, view southeast. 2024.
- Photo 58.** Memorial Hall (resource 3), northeastern corner of central hall, showing original exterior windows (enclosed, *left*) and a portion of the infill wall and former classroom space beyond, view northeast. 2024.
- Photo 59.** Memorial Hall (resource 3) kitchen in north addition, view northeast. 2024.
- Photo 60.** Memorial Hall (resource 3) restroom with fixtures, view west. 2024.
- Photo 61.** Memorial Hall (resource 3) north wing bedroom, view northwest. 2024.
- Photo 62.** Memorial Hall (resource 3) interior, east entry vestibule, view west. 2024.
- Photo 63.** Memorial Hall (resource 3) former munitions room, view southwest. 2024.
- Photo 64.** Memorial Hall (resource 3) Veterans of Foreign Wars (VFW) bar. Door to munitions room is behind the U.S. flag (*center right*), view southwest. 2024.
- Photo 65.** Memorial Hall (resource 3) VFW bar, view northeast. 2024.
- Photo 66.** Memorial Hall with garage (resource 4, *right*) and cyclone fence (resource 10, *far left*), southeast elevation, view northwest. 2025.
- Photo 67.** Memorial Hall garage (resource 4), southeast elevation, view west. 2025.
- Photo 68.** Memorial Hall garage (resource 4), northeast (*left*) and northwest (*right*) elevations. 2025.
- Photo 69.** Memorial Hall garage (resource 4), northwest (*left*) and southwest (*right*) elevations, view east. 2025.
- Photo 70.** Memorial Hall oil tank (resource 5), northeast elevation, view south. 2025.
- Photo 71.** Memorial Hall oil tank (resource 5), southwest and southeast elevations, view north. 2025.

Shoshone County Poor Farm
Name of Property

Shoshone, Idaho
County and State

Photo 72. Arched canvas storage structure (resource 6) north of Memorial Hall, south and west elevations, view northeast. 2025.

Photo 73. Steel vehicle shelter (resource 7) northeast of Memorial Hall, south elevation, view north. 2025.

Photo 74. Steel vehicle shelter (resource 7), west elevation, view east. 2025.

Photo 75. Split-rail fence (resource 8) north of Steam Plant, view south. 2025.

Photo 76. Split-rail fence (resource 9) east of Memorial Hall, view northwest. 2025.

Photo 77. Pole barn building #1 (resource 11), north and west elevations. Pole barn building #2 (resource 12) behind (*right*) and chicken coop (resource 13) off to *left*. Unrelated storage facility *far right*, view southeast. 2025.

Photo 78. Pole barn building #2 (resource 12, *center*) west of Infirmary (*left*), view southeast. 2025.

Photo 79. Galvanized-metal chicken coop (resource 13, *center*) with adjacent canvas and steel shade structure. Pole barn buildings #1 and #2 (resources 11 and 12) behind, view southwest. 2025.

Paperwork Reduction Act Statement: This information is being collected for nominations to the National Register of Historic Places to nominate properties for listing or determine eligibility for listing, to list properties, and to amend existing listings. Response to this request is required to obtain a benefit in accordance with the National Historic Preservation Act, as amended (16 U.S.C. 460 et seq.). We may not conduct or sponsor and you are not required to respond to a collection of information unless it displays a currently valid OMB control number.

Estimated Burden Statement: Public reporting burden for each response using this form is estimated to be between the Tier 1 and Tier 4 levels with the estimate of the time for each tier as follows:

- Tier 1 – 60-100 hours
- Tier 2 – 120 hours
- Tier 3 – 230 hours
- Tier 4 – 280 hours

The above estimates include time for reviewing instructions, gathering and maintaining data, and preparing and transmitting nominations. Send comments regarding these estimates or any other aspect of the requirement(s) to the Service Information Collection Clearance Officer, National Park Service, 1201 Oakridge Drive Fort Collins, CO 80525.

United States Department of the Interior
National Park Service

National Register of Historic Places
Continuation Sheet

Shoshone County Poor Farm

Name of Property
Shoshone, Idaho

County and State
Metal Mining in Idaho (1860-1977)

Name of multiple listing (if applicable)

Section number Photographs Page 67



Photo 1. Shoshone County Poor Farm Infirmary setting, view north, with Silverton Park in foreground. 2025.



Photo 2. Shoshone County Poor Farm setting, view northeast. Infirmary (resource 1) *far right*; Memorial Hall (resource 3) *left of center*. 2025.

United States Department of the Interior
National Park Service

National Register of Historic Places
Continuation Sheet

Shoshone County Poor Farm

Name of Property

Shoshone, Idaho

County and State

Metal Mining in Idaho (1860-1977)

Name of multiple listing (if applicable)

Section number Photographs Page 68



Photo 3. Infirmary (resource 1) setting, view southeast. 2025.



Photo 4. Steam Plant (resource 2) setting, view northwest from Infirmary; Memorial Hall in the

United States Department of the Interior
National Park Service

National Register of Historic Places
Continuation Sheet

Shoshone County Poor Farm

Name of Property

Shoshone, Idaho

County and State

Metal Mining in Idaho (1860-1977)

Name of multiple listing (if applicable)

Section number Photographs Page 69

background. 2025.



Photo 5. Memorial Hall (resource 3) setting, view west from Steam Plant. 2025.

United States Department of the Interior
National Park Service

National Register of Historic Places
Continuation Sheet

Shoshone County Poor Farm

Name of Property
Shoshone, Idaho

County and State
Metal Mining in Idaho (1860-1977)

Name of multiple listing (if applicable)

Section number Photographs Page 70



Photo 6. Shoshone County Poor Farm Infirmary (resource 1), south elevation (facade), view north. 2024.

United States Department of the Interior
National Park Service

National Register of Historic Places
Continuation Sheet

Shoshone County Poor Farm

Name of Property
Shoshone, Idaho

County and State
Metal Mining in Idaho (1860-1977)

Name of multiple listing (if applicable)

Section number Photographs Page 71



Photo 7. Infirmary (resource 1), south and west elevations, view northeast. 2024.



Photo 8. Infirmary (resource 1), west elevation, view east. 2024.

United States Department of the Interior
National Park Service

National Register of Historic Places
Continuation Sheet

Shoshone County Poor Farm

Name of Property
Shoshone, Idaho

County and State
Metal Mining in Idaho (1860-1977)

Name of multiple listing (if applicable)

Section number Photographs Page 72



Photo 9. Infirmary (resource 1), north elevation, view south. 2024.

United States Department of the Interior
National Park Service

National Register of Historic Places
Continuation Sheet

Shoshone County Poor Farm
Name of Property
Shoshone, Idaho
County and State
Metal Mining in Idaho (1860-1977)
Name of multiple listing (if applicable)

Section number Photographs Page 73



Photo 10. Infirmary (resource 1), east elevation of north wing with CMU addition, view west. 2025.



Photo 11. Infirmary (resource 1), north and east elevations of 1964 wing; partial 1917 wing east elevation, view southwest. 2024.

United States Department of the Interior
National Park Service

National Register of Historic Places
Continuation Sheet

Shoshone County Poor Farm

Name of Property

Shoshone, Idaho

County and State

Metal Mining in Idaho (1860-1977)

Name of multiple listing (if applicable)

Section number Photographs Page 74



Photo 12. Infirmary (resource 1) 1964 addition, south and east elevations, view northwest. 2024.

DRAFT

United States Department of the Interior
National Park Service

National Register of Historic Places
Continuation Sheet

Shoshone County Poor Farm

Name of Property
Shoshone, Idaho

County and State
Metal Mining in Idaho (1860-1977)

Name of multiple listing (if applicable)

Section number Photographs Page 75



Photo 13. Infirmary (resource 1), central gable and roof cupola detail, south elevation, view northwest. 2024.



Photo 14. Infirmary (resource 1) main entry porch, south elevation, view northwest. 2024.

**United States Department of the Interior
National Park Service**

**National Register of Historic Places
Continuation Sheet**

Shoshone County Poor Farm

Name of Property

Shoshone, Idaho

County and State

Metal Mining in Idaho (1860-1977)

Name of multiple listing (if applicable)

Section number Photographs Page 76



Photo 15. Infirmary (resource 1, now hotel) entry, view southeast. Elizabeth Allison, 2023.



Photo 16. Infirmary (resource 1, now hotel) first-floor hallway, view east. Elizabeth Allison 2023.

United States Department of the Interior
National Park Service

National Register of Historic Places
Continuation Sheet

Shoshone County Poor Farm
Name of Property
Shoshone, Idaho
County and State
Metal Mining in Idaho (1860-1977)
Name of multiple listing (if applicable)

Section number Photographs Page 77

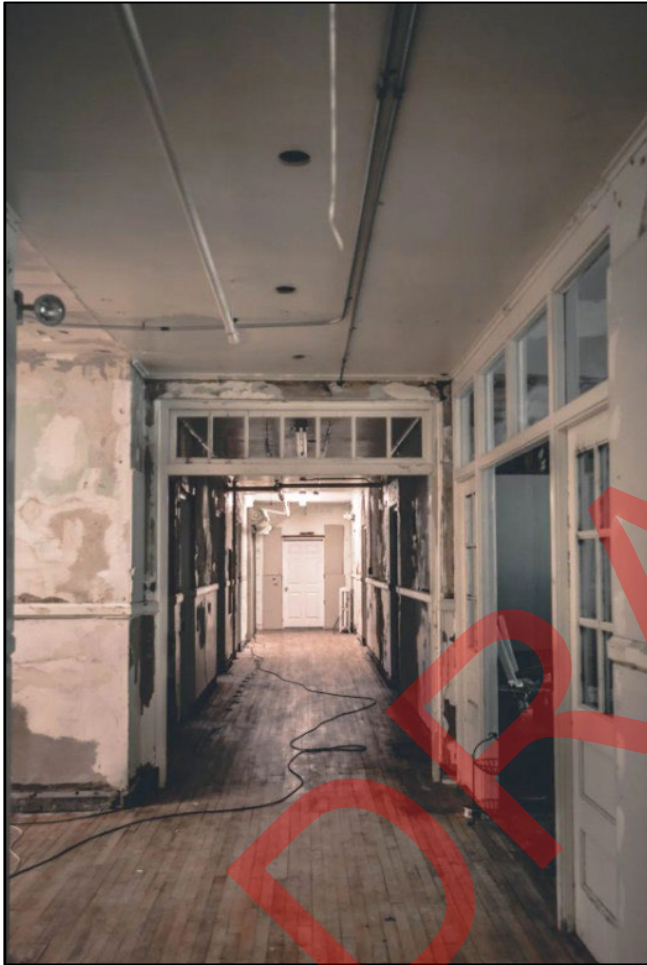


Photo 17. Infirmary (resource 1) entry, view east. Cindy Nunn, ca. 2021.

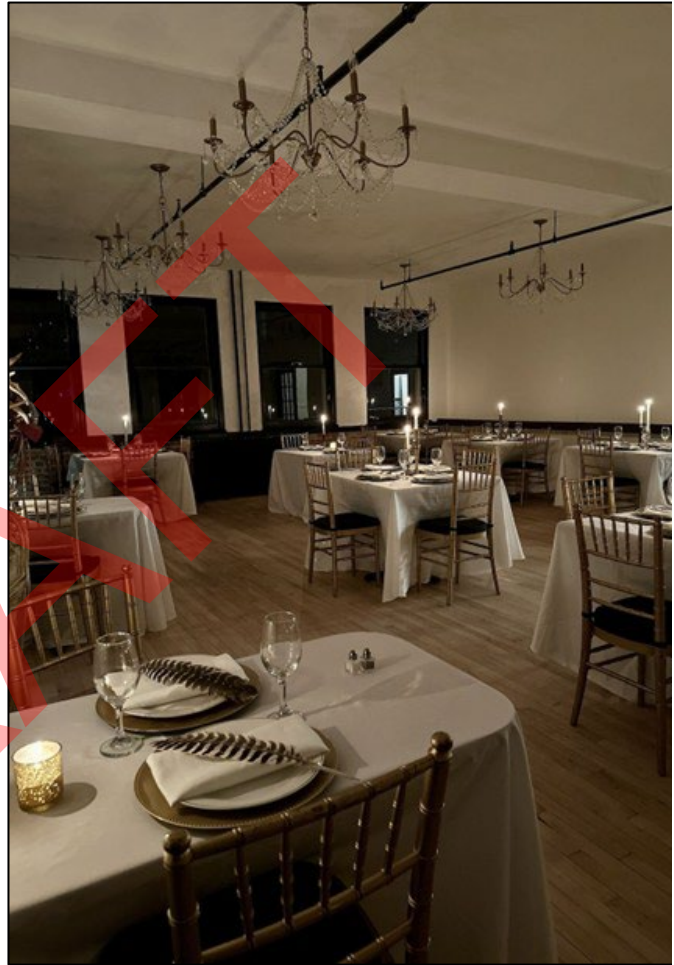


Photo 18. Infirmary (resource 1, now hotel) dining room, view southeast. Elizabeth Allison, 2023.

United States Department of the Interior
National Park Service

National Register of Historic Places
Continuation Sheet

Shoshone County Poor Farm
Name of Property
Shoshone, Idaho
County and State
Metal Mining in Idaho (1860-1977)
Name of multiple listing (if applicable)

Section number Photographs Page 78



Photo 19. Infirmary (resource 1) dining room, view northwest. Note original (1917) brick masonry walls, radiator, and windows, view northwest. 2024.



Photo 20. Otis elevator in original (1917) Infirmary (resource 1) massing, first floor, view north. 2024.

United States Department of the Interior
National Park Service

National Register of Historic Places
Continuation Sheet

Shoshone County Poor Farm

Name of Property

Shoshone, Idaho

County and State

Metal Mining in Idaho (1860-1977)

Name of multiple listing (if applicable)

Section number Photographs Page 79



Photo 21. Infirmary (resource 1) kitchen, view southwest. Cindy Nunn, 2021.

United States Department of the Interior
National Park Service

National Register of Historic Places
Continuation Sheet

Shoshone County Poor Farm

Name of Property

Shoshone, Idaho

County and State

Metal Mining in Idaho (1860-1977)

Name of multiple listing (if applicable)

Section number Photographs Page 80



Photo 22. Infirmary (resource 1) kitchen, view northeast. Cindy Nunn, 2021.

United States Department of the Interior
National Park Service

National Register of Historic Places
Continuation Sheet

Shoshone County Poor Farm
Name of Property
Shoshone, Idaho
County and State
Metal Mining in Idaho (1860-1977)
Name of multiple listing (if applicable)

Section number Photographs Page 81



Photo 23. Infirmary (resource 1) kitchen, walk-in refrigerator, view northwest. 2024.



Photo 24. Infirmary (resource 1), kitchen pantry, view east. 2024.

United States Department of the Interior
National Park Service

National Register of Historic Places
Continuation Sheet

Shoshone County Poor Farm

Name of Property

Shoshone, Idaho

County and State

Metal Mining in Idaho (1860-1977)

Name of multiple listing (if applicable)

Section number Photographs Page 82



Photo 25. Infirmary (resource 1), western end stairwell, view north. 2024.



Photo 26. Infirmary (resource 1), second-floor hallway, view east toward 1964 addition. 2024.

**United States Department of the Interior
National Park Service**

**National Register of Historic Places
Continuation Sheet**

Shoshone County Poor Farm
Name of Property
Shoshone, Idaho
County and State
Metal Mining in Idaho (1860-1977)
Name of multiple listing (if applicable)

Section number Photographs Page 83



Photo 27. Infirmary (resource 1), second-floor patient room, view south. 2024.



Photo 28. Infirmary (resource 1), first-floor north-south hallway, view south. 2024.

United States Department of the Interior
National Park Service

National Register of Historic Places
Continuation Sheet

Shoshone County Poor Farm

Name of Property

Shoshone, Idaho

County and State

Metal Mining in Idaho (1860-1977)

Name of multiple listing (if applicable)

Section number Photographs Page 84



Photo 29. Infirmary (resource 1) laundry room, view west. 2024.



Photo 30. Infirmary (resource 1) stairs from first floor to basement, view west. 2024.

United States Department of the Interior
National Park Service

National Register of Historic Places
Continuation Sheet

Shoshone County Poor Farm

Name of Property

Shoshone, Idaho

County and State

Metal Mining in Idaho (1860-1977)

Name of multiple listing (if applicable)

Section number Photographs Page 85



Photo 31. Infirmary (resource 1) basement with Ideal furnace, view north. 2024.



Photo 32. Infirmary (resource 1) basement cold storage room, view west. 2024.

United States Department of the Interior
National Park Service

National Register of Historic Places
Continuation Sheet

Shoshone County Poor Farm

Name of Property
Shoshone, Idaho

County and State
Metal Mining in Idaho (1860-1977)

Name of multiple listing (if applicable)

Section number Photographs Page 86



Photo 33. Steam Plant (resource 2), north and east elevations, view southwest. 2025.



Photo 34. Steam Plant (resource 2), east elevation, view west. 2025.

United States Department of the Interior
National Park Service

National Register of Historic Places
Continuation Sheet

Shoshone County Poor Farm

Name of Property

Shoshone, Idaho

County and State

Metal Mining in Idaho (1860-1977)

Name of multiple listing (if applicable)

Section number Photographs Page 87



Photo 35. Steam Plant (resource 2), east and south elevations, view northwest. 2025.



Photo 36. Steam Plant (resource 2), south elevation, view north. 2025.

United States Department of the Interior
National Park Service

National Register of Historic Places
Continuation Sheet

Shoshone County Poor Farm
----- Name of Property
Shoshone, Idaho
----- County and State
Metal Mining in Idaho (1860-1977)
----- Name of multiple listing (if applicable)

Section number Photographs Page 88



Photo 37. Steam Plant (resource 2), west elevation, view east. 2025.



Photo 38. Steam Plant (resource 2), west and north elevations, view southeast. 2025.

United States Department of the Interior
National Park Service

National Register of Historic Places
Continuation Sheet

Shoshone County Poor Farm

Name of Property
Shoshone, Idaho

County and State
Metal Mining in Idaho (1860-1977)

Name of multiple listing (if applicable)

Section number Photographs Page 89



Photo 39. Steam Plant (resource 2), south elevation, detail of brick cornice. 2025.



Photo 40. Steam Plant (resource 2) dining area with pass-through to office, view southeast. 2025.

United States Department of the Interior
National Park Service

National Register of Historic Places
Continuation Sheet

Shoshone County Poor Farm

Name of Property

Shoshone, Idaho

County and State

Metal Mining in Idaho (1860-1977)

Name of multiple listing (if applicable)

Section number Photographs Page 90



Photo 41. Steam Plant (resource 2) dining and living area, view northwest. 2025.



Photo 42. Steam Plant (resource 2) kitchen, view southeast. 2025.

United States Department of the Interior
National Park Service

National Register of Historic Places
Continuation Sheet

Shoshone County Poor Farm
----- Name of Property
Shoshone, Idaho
----- County and State
Metal Mining in Idaho (1860-1977)
----- Name of multiple listing (if applicable)

Section number Photographs Page 91



Photo 43. Steam Plant (resource 2) former coal room in the basement, view southeast. 2025.



Photo 44. Steam Plant (resource 2) basement, concrete beam detail, view east. 2025.

United States Department of the Interior
National Park Service

National Register of Historic Places
Continuation Sheet

Shoshone County Poor Farm
Name of Property
Shoshone, Idaho
County and State
Metal Mining in Idaho (1860-1977)
Name of multiple listing (if applicable)

Section number Photographs Page 92



Photo 45. Steam Plant (resource 2) basement, infilled smokestack opening, view northeast. 2025.

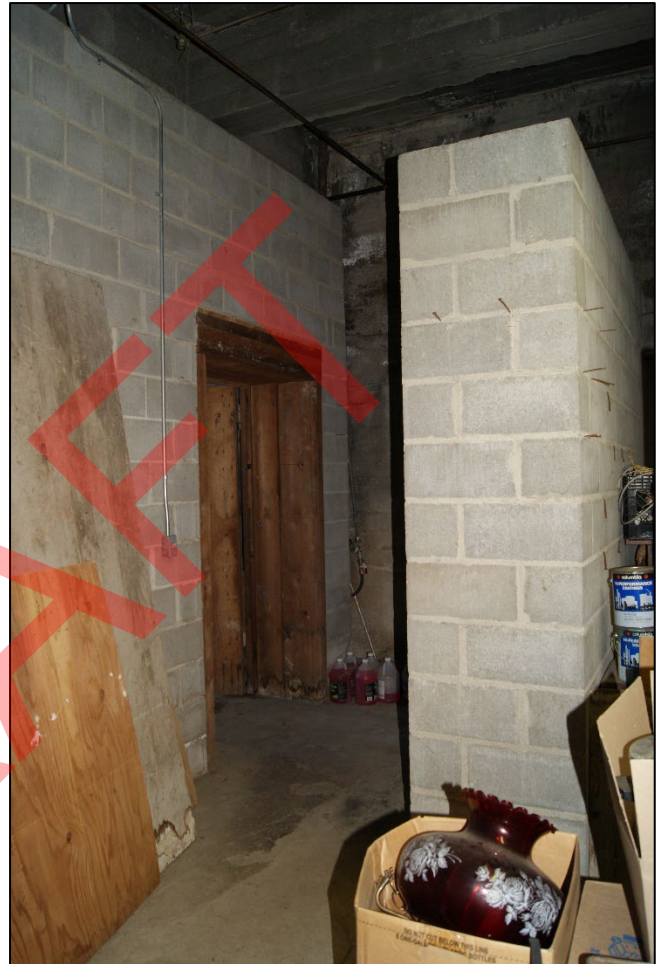


Photo 46. Steam Plant (resource 2) basement, new CMU interior wall, view north. 2025.

**United States Department of the Interior
National Park Service**

**National Register of Historic Places
Continuation Sheet**

Shoshone County Poor Farm
Name of Property
Shoshone, Idaho
County and State
Metal Mining in Idaho (1860-1977)
Name of multiple listing (if applicable)

Section number Photographs Page 93



Photo 47. Steam Plant (resource 2) basement, steel hatch, view northeast. 2025.



Photo 48. Steam Plant (resource 2) basement, equipment elevator remnants, view west. 2025.

United States Department of the Interior
National Park Service

National Register of Historic Places
Continuation Sheet

Shoshone County Poor Farm

Name of Property

Shoshone, Idaho

County and State

Metal Mining in Idaho (1860-1977)

Name of multiple listing (if applicable)

Section number Photographs Page 94



Photo 49. Shoshone County Poor Farm Isolation Hospital (Memorial Hall, resource 3), view northwest. 2024.



Photo 50. Memorial Hall (resource 3) main entry detail, view northeast. 2024.
Continuation Sheet page 94

United States Department of the Interior
National Park Service

National Register of Historic Places
Continuation Sheet

Shoshone County Poor Farm

Name of Property

Shoshone, Idaho

County and State

Metal Mining in Idaho (1860-1977)

Name of multiple listing (if applicable)

Section number Photographs Page 95



Photo 51. Memorial Hall (resource 3), west wing, south and west elevation, view northeast. 2024.



Photo 52. Memorial Hall (resource 3), north elevation (right) and north wing west elevation (left), view

United States Department of the Interior
National Park Service

National Register of Historic Places
Continuation Sheet

Shoshone County Poor Farm

Name of Property
Shoshone, Idaho

County and State
Metal Mining in Idaho (1860-1977)

Name of multiple listing (if applicable)

Section number Photographs Page 96

southeast. 2025.

DRAFT

United States Department of the Interior
National Park Service

National Register of Historic Places
Continuation Sheet

Shoshone County Poor Farm

Name of Property
Shoshone, Idaho

County and State
Metal Mining in Idaho (1860-1977)

Name of multiple listing (if applicable)

Section number Photographs Page 97



Photo 53. Memorial Hall (resource 3), north elevation, view south. 2024.



Photo 54. Memorial Hall (resource 3), east elevation, view west. 2024.

United States Department of the Interior
National Park Service

National Register of Historic Places
Continuation Sheet

Shoshone County Poor Farm

Name of Property

Shoshone, Idaho

County and State

Metal Mining in Idaho (1860-1977)

Name of multiple listing (if applicable)

Section number Photographs Page 98

DRAFT

United States Department of the Interior
National Park Service

National Register of Historic Places
Continuation Sheet

Shoshone County Poor Farm

Name of Property

Shoshone, Idaho

County and State

Metal Mining in Idaho (1860-1977)

Name of multiple listing (if applicable)

Section number Photographs Page 99



Photo 55. Memorial Hall (resource 3), east elevation (*right*) and partial north elevation (*left*), view southwest. 2024.



United States Department of the Interior
National Park Service

National Register of Historic Places
Continuation Sheet

Shoshone County Poor Farm

Name of Property

Shoshone, Idaho

County and State

Metal Mining in Idaho (1860-1977)

Name of multiple listing (if applicable)

Section number Photographs Page 100

Photo 56. Memorial Hall (resource 3) interior, main floor, view southwest. 2024.



Photo 57. Memorial Hall (resource 3) interior, west wing, view southeast. 2024.

United States Department of the Interior
National Park Service

National Register of Historic Places
Continuation Sheet

Shoshone County Poor Farm

Name of Property

Shoshone, Idaho

County and State

Metal Mining in Idaho (1860-1977)

Name of multiple listing (if applicable)

Section number Photographs Page 101



Photo 58. Memorial Hall (resource 3), northeastern corner of central hall, showing original exterior windows (enclosed, *left*) and a portion of the infill wall and former classroom space beyond, view northeast. 2024.

United States Department of the Interior
National Park Service

National Register of Historic Places
Continuation Sheet

Shoshone County Poor Farm

Name of Property

Shoshone, Idaho

County and State

Metal Mining in Idaho (1860-1977)

Name of multiple listing (if applicable)

Section number Photographs Page 102



Photo 59. Memorial Hall (resource 3) kitchen in north addition, view northeast. 2024.



Photo 60. Memorial Hall (resource 3) restroom



Photo 61. Memorial Hall (resource 3) north wing

**United States Department of the Interior
National Park Service**

**National Register of Historic Places
Continuation Sheet**

Shoshone County Poor Farm
Name of Property
Shoshone, Idaho
County and State
Metal Mining in Idaho (1860-1977)
Name of multiple listing (if applicable)

Section number Photographs Page 103

with fixtures, view west. 2024.

bedroom, view northwest. 2024.

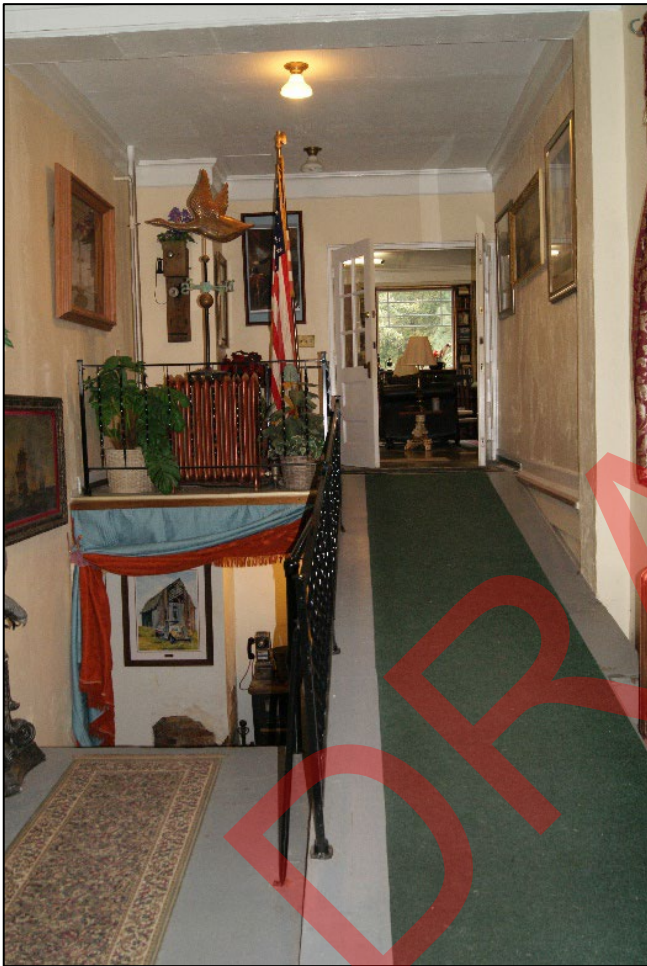


Photo 62. Memorial Hall (resource 3) interior, east entry vestibule, view west. 2024.



Photo 63. Memorial Hall (resource 3), former munitions room, view southwest. 2024.

United States Department of the Interior
National Park Service

National Register of Historic Places
Continuation Sheet

Shoshone County Poor Farm

Name of Property

Shoshone, Idaho

County and State

Metal Mining in Idaho (1860-1977)

Name of multiple listing (if applicable)

Section number Photographs Page 104



Photo 64. Memorial Hall (resource 3) Veterans of Foreign Wars (VFW) bar. Door to munitions room is behind the U.S. flag (center right), view southwest. 2024.



Photo 65. Memorial Hall (resource 3) VFW bar, view northeast. 2024.

United States Department of the Interior
National Park Service

National Register of Historic Places
Continuation Sheet

Shoshone County Poor Farm

Name of Property

Shoshone, Idaho

County and State

Metal Mining in Idaho (1860-1977)

Name of multiple listing (if applicable)

Section number Photographs Page 105

DRAFT

United States Department of the Interior
National Park Service

National Register of Historic Places
Continuation Sheet

Shoshone County Poor Farm

Name of Property

Shoshone, Idaho

County and State

Metal Mining in Idaho (1860-1977)

Name of multiple listing (if applicable)

Section number Photographs Page 106



Photo 66. Memorial Hall with garage (resource 4, right) and cyclone fence (resource 10, far left), southeast elevation, view northwest. 2025.



Photo 67. Memorial Hall garage (resource 4), southeast elevation, view west. 2025.

United States Department of the Interior
National Park Service

National Register of Historic Places
Continuation Sheet

Shoshone County Poor Farm

Name of Property
Shoshone, Idaho

County and State
Metal Mining in Idaho (1860-1977)

Name of multiple listing (if applicable)

Section number Photographs Page 107



Photo 68. Memorial Hall garage (resource 4), northeast (*left*) and northwest (*right*) elevations, view south. 2025.

United States Department of the Interior
National Park Service

National Register of Historic Places
Continuation Sheet

Shoshone County Poor Farm

Name of Property
Shoshone, Idaho

County and State
Metal Mining in Idaho (1860-1977)

Name of multiple listing (if applicable)

Section number Photographs Page 108



Photo 69. Memorial Hall garage (resource 4), northwest (*left*) and southwest (*right*) elevations, view east. 2025.

United States Department of the Interior
National Park Service

National Register of Historic Places
Continuation Sheet

Shoshone County Poor Farm
Name of Property
Shoshone, Idaho
County and State
Metal Mining in Idaho (1860-1977)
Name of multiple listing (if applicable)

Section number Photographs Page 109



Photo 70. Memorial Hall oil tank (resource 5), northeast elevation, view south. 2025.



Photo 71. Memorial Hall oil tank (resource 5), southwest and southeast elevations, view north. 2025.

United States Department of the Interior
National Park Service

National Register of Historic Places
Continuation Sheet

Shoshone County Poor Farm

Name of Property
Shoshone, Idaho

County and State
Metal Mining in Idaho (1860-1977)

Name of multiple listing (if applicable)

Section number Photographs Page 110



Photo 72. Arched canvas storage structure (resource 6) north of Memorial Hall, south and west elevations, view northeast. 2025.

United States Department of the Interior
National Park Service

National Register of Historic Places
Continuation Sheet

Shoshone County Poor Farm
Name of Property
Shoshone, Idaho
County and State
Metal Mining in Idaho (1860-1977)
Name of multiple listing (if applicable)

Section number Photographs Page 111



Photo 73. Steel vehicle shelter (resource 7) northeast of Memorial Hall, south elevation, view north. 2025.



Photo 74. Steel vehicle shelter (resource 7), west elevation, view east. 2025.

United States Department of the Interior
National Park Service

National Register of Historic Places
Continuation Sheet

Shoshone County Poor Farm

Name of Property

Shoshone, Idaho

County and State

Metal Mining in Idaho (1860-1977)

Name of multiple listing (if applicable)

Section number Photographs Page 112



Photo 75. Split-rail fence (resource 8) north of Steam Plant, view south. 2025.



Photo 76. Split-rail fence (resource 9) east of Memorial Hall, view northwest. 2025.

United States Department of the Interior
National Park Service

National Register of Historic Places
Continuation Sheet

Shoshone County Poor Farm

Name of Property

Shoshone, Idaho

County and State

Metal Mining in Idaho (1860-1977)

Name of multiple listing (if applicable)

Section number Photographs Page 113



Photo 77. Pole barn building #1 (resource 11), north and west elevations. Pole barn building #2 behind (*right*) and chicken coop (resource 13) off to *left*. Unrelated storage facility *far right*, view southeast. 2025.

United States Department of the Interior
National Park Service

National Register of Historic Places
Continuation Sheet

Shoshone County Poor Farm

Name of Property

Shoshone, Idaho

County and State

Metal Mining in Idaho (1860-1977)

Name of multiple listing (if applicable)

Section number Photographs Page 114



Photo 78. Pole barn building #2 (resource 12, center) west of Infirmary (left), view southeast. 2025.

United States Department of the Interior
National Park Service

National Register of Historic Places
Continuation Sheet

Shoshone County Poor Farm

Name of Property
Shoshone, Idaho

County and State
Metal Mining in Idaho (1860-1977)

Name of multiple listing (if applicable)

Section number Photographs Page 115



Photo 79. Galvanized-metal chicken coop (resource 13, *center*) with adjacent canvas and steel shade structure. Pole barn buildings #1 and #2 (resources 11 and 12) behind, view southwest. 2025.