



IDAHO STATE
**HISTORICAL
SOCIETY**

Preserving the Past, Enriching the Future

Essential Public Services and
Programs, Collections, and
Cultural Resources



HISTORY.IDAHO.GOV

2205 Old Penitentiary Rd. | Boise, ID 83712



IDAHO STATE
**HISTORICAL
SOCIETY**

Janet L. Gallimore

Executive Director and State Historic Preservation Officer

The Idaho State Historical Society is a trusted guide through the state's history and how it has shaped every aspect of our lives, our land, our communities, our government, and our people. Created in 1881 and established as a state agency in 1907, the Idaho State Historical Society (ISHS) is an extraordinary system of cultural and historic resources comprised of the Idaho State Museum, Idaho State Archives, Idaho State Historic Preservation Office (SHPO), and Old Idaho Penitentiary and Historic Sites Program.

The ISHS preserves and provides access to irreplaceable state-owned historic collections, including prehistoric, historic and state artifacts; photographs, maps, manuscripts and architectural drawings; territorial, county, city, and state government records. ISHS stewards and maintains 61 buildings which include historically significant structures.

The ISHS benefits Idahoans through key programs including capitol curation and exhibitions, records management through the Idaho State Archives, operation of cultural facilities of the state including the Idaho State Museum and Old Idaho Penitentiary, and management of the programs under the National Historic Preservation Act, including the National Register of Historic Places.

The ISHS serves over 110,000 people each year through educational programs, inspiring exhibitions, engaging events, genealogy and family history, research use, and technical assistance. Annually, over 15,000 school-aged children benefit from ISHS programs and visits.

The ISHS is state assisted and raises more than half of its budget to support services and programs with a mix of fees, public and private grants, memberships; and corporate and philanthropic gifts.

IDAHO STATE HISTORICAL SOCIETY BOARD OF TRUSTEES

The Idaho State Historical Society Board of Trustees is the policy-making and governance body for the agency, is appointed by the governor, and has all the powers and duties established by the Constitution of the State of Idaho. Trustees provide a statewide perspective that informs agency services and serves as a vital communication link back to their communities.

AFFILIATE BOARDS

Archaeological Survey of Idaho Board
The Foundation for Idaho History
Franklin Pioneer Association and the City of Franklin
Friends of Stricker Ranch, Hansen, ID
Governor's Lewis and Clark Trail Committee
Historic Sites Review Board
Idaho Geographic Names Advisory Council
J. Howard Bradbury Logging Museum and the City of Pierce
State Historical Records Advisory Board

For more information on ISHS affiliate boards, please visit
[HISTORY.IDAHO.GOV/ABOUT](https://history.idaho.gov/about).

PROFESSIONAL STAFF

The ISHS engages Idahoans and makes history an essential resource through the remarkable work of over 80 dedicated, professional staff members and 150 volunteers.

Our staff are experts in a range of disciplines including history, historic preservation, archaeology, education and public programming, communication and engagement, fund development and finance, maintenance and operations, human resources, information technology, marketing, and collections, archives, and records management.



**FOUNDATION
for IDAHO HISTORY**

The Foundation for Idaho History is the 501 (c) 3 fundraising engine that powers the Idaho State Historical Society, ensuring that Idaho's stories are uncovered, illuminated, and passed along to future generations.

The Foundation bridges the gap between the funding allocated by the state legislature and the revenue-based resources required to create a variety of programs, exhibits, and events. The Idaho State Historical Society (ISHS) relies on community support via donations, membership, paid admissions, fundraising events, and more to generate roughly half of the ISHS's annual budget for initiatives that touch every corner of our state. It would not be possible to safeguard the stories and artifacts of our past without time, energy, expertise, and resources from the ISHS's generous statewide members and donors.



EXECUTIVE BRANCH AGENCY OF STATE GOVERNMENT



AGENCY RESPONSIBILITIES AS OUTLINED BY IDAHO CODE

The Idaho State Historical Society is a system of cultural and historic resources comprised of the Idaho State Museum, Idaho State Archives, State Historic Preservation Office, and Old Idaho Penitentiary and statewide Historic Sites Program. The agency was established by statute in 1907 and is organized within the Executive Department of Self-Governing Agencies, reporting to the Governor of Idaho. The agency's core functions, pursuant to Chapter 41, Title 67, Idaho Code, are that the agency's trustees shall:

- 1)** Identify, preserve, and protect sites, monuments, and points of interest in Idaho of historic merit (Section 67- 4114, Idaho Code);
- 2)** Protect archeological and vertebrate paleontological sites and resources on public land (Section 67-4119, Idaho Code);
- 3)** Govern the agency and administer the powers and duties required to preserve and protect any historical record of the history and culture of Idaho (Section 67-4123, Idaho Code);
- 4)** Encourage and promote interest in the state of Idaho and collect, preserve, and exhibit artifacts/information illustrative of Idaho history, culture, and society (Section 67-4126, Idaho Code);
- 5)** Facilitate the use of records for official reference and historical research (Section 67-4126(6), Idaho Code);
- 6)** Be responsible for records management services for state government and accept archival material from local governments (Section 67-4126(7), Idaho Code);
- 7)** Serve as the Geographic Names Board of the state (Section 67-4126(15), Idaho Code);
- 8)** Carry out the preservation and protection of the state's historic, archeological, architectural, and cultural heritage resources (Chapter 46, Title 67, Idaho Code);
- 9)** Provide for the creation of an Idaho Archeological Survey (Section 33-3901, Idaho Code);
- 10)** Be responsible for consultation, determination of appropriate actions, and providing for re internment of human remains that have been disturbed (Chapter 5, Title 27, Idaho Code); and
- 11)** Administer the National Historic Preservation Act that assigns responsibility to the state historic preservation officer for administration of the national historic preservation program at the state level (54 U.S.C. 300101).
- 12)** The Idaho State Historical Society works cooperatively with the Idaho Capitol Commission to support a capitol curator to preserve, manage and protect the capitol building, and its historic collections and exhibits (Section 67-1608, Idaho Code).



ESSENTIAL GOVERNMENT SERVICES AND PROGRAMS

The Idaho State Historical Society provides preservation, rehabilitation, restoration, and reconstruction management services for the State of Idaho's historic buildings. This includes planning, maintenance, and treatment in accordance with the Secretary of the Interior's Standards for the Treatment of Historic Properties.

PUBLIC RECORDS RETENTION



ISHS provides essential management of, and day-to-day access to public records critical to ongoing legal proceedings at all levels of the Idaho judiciary. These include civil court, criminal court, estate, land, mining, tax, tax appeals, and water rights

records vital to the courts and to the operations of state, county, and city governments, including law enforcement and the Idaho Bureau of Homeland Security. Public records in the Idaho State Archives also help citizens with their legal rights by accessing vital information from birth, death, marriage, divorce and other records.

TECHNICAL ASSISTANCE OUTREACH



The Idaho State Historical Society provides statewide outreach and consultation to local museums, historical societies, libraries, cities and counties, and historic preservation commissions across Idaho on matters related to collections and archival

management, records retention, and preservation planning.

NATIONAL REGISTER OF HISTORIC PLACES (NRHP)



The National Register of Historic Places is an honorific program which recognizes those properties that are considered important in our past and worthy of preservation. The State Historic Preservation Office manages the program for the State of Idaho,

providing technical assistance to communities, property owners, organizations, and federal agencies seeking to list their properties.

CERTIFIED LOCAL GOVERNMENT PROGRAM (CLG)



Through this partnership program, the SHPO re-grants funds and provides technical assistance to local governments to pursue their own preservation priorities. Since 1982, the SHPO has passed through over \$2 million to participating cities and

counties. Idaho has forty-five Certified Local Governments as of 2022.

FEDERAL REHABILITATION TAX CREDIT PROGRAM



The Idaho State Historic Preservation Office administers the historic rehabilitation tax credit program, a federal incentive promoting urban and rural revitalization through private investment in the reuse of historic buildings. This program allows the owner

of a certified historic income-producing building to receive up to 20% of the amount spent on qualified rehabilitation costs as a federal income tax credit. The program has generated over \$30 million of private construction investment and has aided in the preservation of more than fifty historic buildings in Idaho.

FEDERAL HISTORIC PRESERVATION PROJECT REVIEW (SECTION 106)



Under the Section 106 of the National Historic Preservation Act (NHPA) and its associated federal regulations (36CFR800), federal agencies are required to consult with the Idaho State Historic Preservation Office (SHPO) in an effort to avoid, minimize, or

mitigate adverse effects to historic properties that may result from the use of federal funds, licenses, permits, or projects on federal lands. In this way, the SHPO gives local voice to federal action and works to preserve the State's cultural resources for the benefit of the citizens of Idaho. Currently, the SHPO consults on approximately 1,200 federal projects per year, though a significant increase in that number is anticipated in coming years as a result of recent federal infrastructure appropriations.

STATE HISTORIC AND ARCHAEOLOGICAL SITES RECORDS MANAGEMENT



The SHPO is the state repository for documentation of recorded historic and archaeological sites in Idaho. Currently, the inventory consists of more than 96,000 site records. This information is available to researchers and agencies at all levels of government for planning

purposes, especially as it relates to evaluation of potential project impacts to cultural resources.



ESSENTIAL SERVICES, FACILITIES, AND PROGRAMS

IDAHO STATE MUSEUM



The Idaho State Museum provides a fun, interactive experience where people of all ages come to explore the story of Idaho. Furthermore, the museum looks at how Idaho's unique landscapes have shaped, and continue to shape, our experience. The museum shows the profound relationship between Idaho's people and its land have always defined what it means to live here.

IDAHO STATE RECORDS CENTER



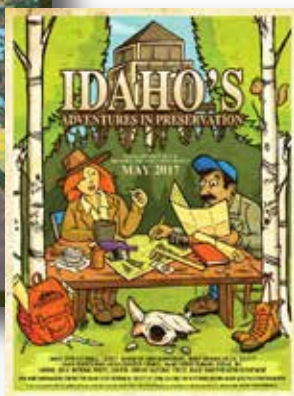
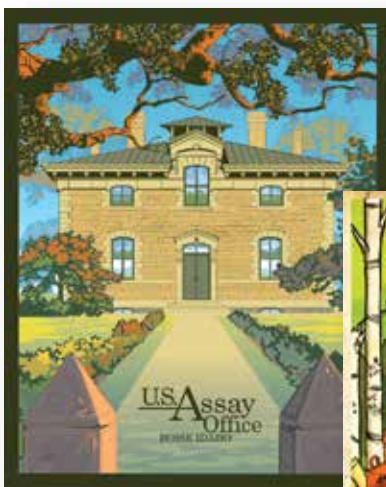
The State Records Center was created in 1989 to serve government agencies. The Center provides centralized storage and records management services to state agencies.

IDAHO STATE HISTORIC PRESERVATION OFFICE



The State Historic Preservation Office (SHPO) encourages the preservation, documentation, and use of cultural resources. Idaho SHPO educates the public about the importance of Idaho's cultural heritage. Idaho's historic, archaeological, and cultural resources

represent the physical and tangible manifestations of our history; they reflect who we were, where we came from, where we are now, and help shape our outlook for the future. These resources provide economic, educational, and intrinsic value today and for future generations. The Idaho SHPO works to ensure the state's historic and archaeological properties are preserved, interpreted, and reused.



IDAHO HISTORY CENTER

IDAHO STATE HISTORICAL SOCIETY ADMINISTRATION



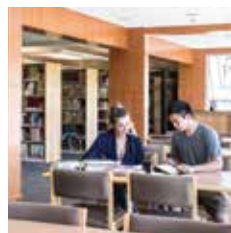
The Idaho State Historical Society administration offices provide support to all ISHS sites, in addition to facilitating grant and re-granting programs, fiscal management, human resources, maintenance operations, legislative support, marketing and communications, membership and volunteer coordination, and philanthropic support.

IDAHO STATE ARCHIVES



The Idaho State Archives (ISA) and Research Center provides public access to records of fiscal, administrative, legal, vital and long-term research value to the citizens and government of Idaho. ISA preserves a large and unique collection of materials that relate to the history of Idaho and the Pacific Northwest, including photographs, books, maps, manuscripts, oral histories, and government records.

MERLE W. WELLS RESEARCH CENTER



The Merle W. Wells Research Center offers the public access to a comprehensive library of Idaho inspired books and publications, in addition to microfilm, oral histories; and a temporary gallery space that hosts exhibitions curated by items from the

Archives' holdings. The Research Center staff assists the public, visitors, scholars, and students with their research requests.

A. LINCOLN: HIS LEGACY IN IDAHO EXHIBITION



The *Abraham Lincoln: His Legacy in Idaho* exhibition at the Idaho State Archives features over 200 artifacts and documents that reveal the intriguing and significant connections between the 16th president and the 43rd state. The exhibition opens with a

recreation of Lincoln's Cabinet Room where the Emancipation Proclamation was signed. Galleries that follow illuminate Lincoln's life from poverty to presidency, and detail his contributions to Idaho Territory's inception in 1863.



ESSENTIAL SERVICES, FACILITIES, AND PROGRAMS

HISTORICAL HIGHWAY MARKERS



Former State Historian Dr. Merle Wells initiated Idaho's Highway Historical Marker Program in 1956. Wells worked with others to install six experimental markers. Deemed a success, the program continued and is now operated cooperatively by the

Idaho Transportation Department and the Idaho State Historical Society. Over 300 state markers have been installed along Idaho's highways, connecting Idaho history to geography.

STATEWIDE HISTORIC SITES

OLD IDAHO PENITENTIARY



Built in 1870, the Old Idaho Penitentiary is one of only four territorial prisons open to the public today. During its 101 years of operation, the site saw escapes, scandals and the effects of Boise's transition from the "wild west" to a

mid-20th century capital city. Step inside the walls of this 4-acre prison campus and experience the stories that traverse 150 years.



ROCK CREEK STATION AND STRICKER HOME SITE



The site dates to 1865 and includes the Stricker House, Rock Creek Store, a pioneer cemetery, educational pavilion, and numerous outbuildings. This historic site, added to the National Register of Historic Places in 1980, tells the complete

story of the rural area south of Hansen, which served as an early transportation center for the Oregon Trail, Overland mail stage route, and the Kelton Freight Road. The site is managed in partnership with the local Friends of Stricker group.

HISTORIC FRANKLIN PROPERTIES



The properties date from 1872 and include the Lorenzo Hill Hatch house, John and Ann Doney house, Franklin Cooperative Mercantile Store, and the Relic Hall. These historic properties, listed in the National Register of Historic Places, provide a unique

orientation to travelers along the Pioneer Byway in southeastern Idaho and a comprehensive overview of the region's history. This site is managed through a community partnership with the Franklin Pioneer Association, and the city of Franklin.

TABLE ROCK MESA



The Idaho State Historical Society manages the Table Rock Mesa, located in east Boise. The Old Penitentiary Trailhead provides hiking or biking access to the mesa. Volunteer efforts to preserve the trail and the mesa are coordinated by the Old Idaho Penitentiary.

THE BISHOPS' HOUSE



The Bishops' House is managed on behalf of the Idaho State Historical Society by The Friends of The Bishops' House, a non-profit organization. This beautiful building was once home to a succession of the Episcopal Bishops of Idaho. Each of the men who served as

the head of Episcopal Diocese of Idaho lived in this home with their families while serving in the capacity as the Episcopal Bishop of Idaho. The original house was built in the late 1880's and was remodeled to its current stately, towered Queen Anne style Victorian home in 1899.

PIERCE COURTHOUSE



Shoshone County established the property in 1862. Interpretive exhibitions at this site tell the story of exploration of the Clearwater River area and prospecting and mining in what was then Washington Territory.

The courthouse is managed through a community partnership with J. Howard Bradbury Memorial Logging Museum.



ESSENTIAL SERVICES, FACILITIES, AND PROGRAMS

POLICY RESEARCH

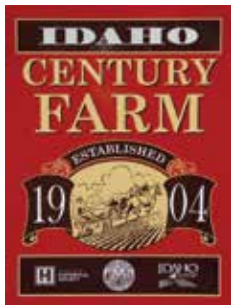


The Idaho State Historical Society provides contextual policy assistance services to Idaho's Executive Branch officials. Policy briefing reports give historical perspective to contemporary decision-making. The Idaho State Archives preserves and provides access

to official records of Idaho Government and that of its governors, affording public transparency in government and understanding of policy priorities and decisions over time.

AWARD RECOGNITION AND GRANT PROGRAMS

CENTURY FARM AND RANCH PROGRAM



A collaboration between the Idaho State Historical Society and the Department of Agriculture, the Idaho Century Farm and Ranch Program recognizes families who persevered through physical hardships, natural disasters, and economic hardship to settle this great state. The program has recognized over 450 farms and ranches

owned and operated in Idaho by the same family for at least 100 years, provided that at least 40 acres of the original parcel of land has remained in agricultural over time.

ESTO PERPETUA AWARDS



A signature ISHS program since 1999, the Esto Perpetua Awards honor significant contributions to the preservation and promotion of Idaho history. Each year organizations and individuals are recognized for professional accomplishment, public

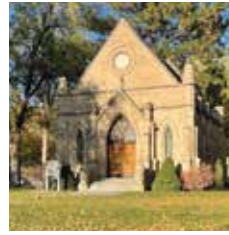
service, volunteerism, and philanthropy. Award winners exemplify excellence in preservation through innovation and demonstrated commitment to the education, protection, and interpretation of Idaho's cultural or natural assets and the integration of these assets into community life.

SISTER ALFREDA



The Sister Alfreda Elsensohn Award for Outstanding Service was initiated in 2008. It has been a joint award given annually by the Idaho Humanities Council and the Idaho State Historical Society to recognize outstanding service by an Idaho museum, historical society, or interpretive organization/association.

GRANTS AND RE-GRANTING

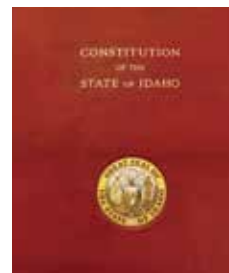


The Idaho State Historical Society invests in community development and preservation through local grant programs. The Board of Trustees oversees the Community Enhancement Grant (CEG) program. The State Historical Society also partners with the

State Historical Records Advisory Board, the Governor's Lewis and Clark Trail Committee, and the National Park Service Certified Local Government Program on grants that support museums, archives, and historic preservation.

ENVIRONMENTALLY-CONTROLLED PROTECTION OF STATE CULTURAL RESOURCES

DOCUMENT AND ARTIFACT PRESERVATION



The Idaho State Museum manages the State of Idaho's collections. This includes cataloging, photo documentation, preservation, managing private donations, and incoming and outgoing loans to organizations throughout the state.

The Idaho State Archives provides archival management for the State of Idaho's public records including photographs, manuscripts, maps, books, periodicals, and oral history interviews. Services include cataloging, digitization, preservation, and Inter-library Loan services.

ARCHAEOLOGICAL ARTIFACT STEWARDSHIP



The SHPO manages the State of Idaho's archaeological artifacts, including inventorying and cataloging, and providing fee-based curation and management services for artifacts collected from federal lands. The Repository holds over 93,000 historic

artifacts from over 4,000 archaeological sites located in the ten-county area of southwest Idaho. The collections also include associated documents such as catalogs, field notes, photographic materials, analysis records, final reports, and maps; and archaeological site context materials such as faunal and plant remains, and soil/sediment and charcoal samples.



COLLECTIONS AND CULTURAL RESOURCES

The Idaho State Archives holds and provides public access to the most comprehensive collection of Idaho and regional history materials in the state, including:

MANUSCRIPTS AND STATE ARCHIVAL MATERIAL



Manuscript and state archival material, such as the personal papers of Senator William E. Borah; records of the territorial government; gubernatorial papers from George Shoup through Butch Otter; records of the Idaho Soldiers' Home; and Snake River Basin Adjudication Water Rights records.

MICROFILM AND NEWSPAPERS



Rolls of microfilm available for reproduction, including Idaho newspapers dating from 1863 to present, county-level records (land and property, citizenship, court, vital and tax) dating from 1863, Sanborn fire insurance maps for many Idaho cities, Idaho death certificates (1911-1937),

federal census schedules (1790-1930), theses and dissertations on Idaho topics, and a variety of materials related to Idaho history.

FILM AND VIDEOS



Motion picture films and videos, including a 16mm copy of a 1916 film celebrating the 10th anniversary of the town of Buhl in south central Idaho, footage of a 1935 National Geographic Society expedition on the Salmon River, and promotional films produced

by the Idaho Department of Commerce (1960s-1990s).

THE IDAHO DIGITAL NEWSPAPER PROJECT



More than 80 historic newspapers from across the Gem State available to anyone with internet access through the Idaho Digital Newspaper Project. Researchers can browse or keyword search articles spanning 1863 to 1925, more than 60 years of Idaho's history.

The Idaho Digital Newspaper Project is a partnership between the National Endowment for the Humanities (NEH), the Library of Congress (LC) and the Idaho State Archives, with technical assistance from the Montana Historical Society. The digitized newspaper collection is located at chroniclingamerica.loc.gov.

PHOTOGRAPHS



Photographic images (prints, negatives, slides, and transparencies), including images taken by E. Jane Gay during the allotment of lands for the Nez Perce Indians; the life work of Boise photographer R. Harold Sigler; images from the Sherwood family, pioneer settlers of the Henry's Lake area of Idaho; and inmate 'mug shots' from the Idaho Territorial/State Prison.

ORAL HISTORIES



An extensive oral history collection with individual interviews (audio and video formats), projects documenting topics like African Americans in Southeast Idaho, Czechoslovakian Culture in the Buhl-Castleford Area, Women and Political Activism in Idaho, 1945-1980, saddle making in Idaho, the Bureau of Land Management in Idaho, and the Veterans History Project.

MAPS AND BLUEPRINTS



A series of hand-drawn and hand-colored maps prepared by Idaho's first surveyor general, Lafayette Cartee; state highway maps, fire insurance maps for a variety of towns and businesses, and blueprints and architectural plans from the state's premier architectural firms, such as Tourtellotte and Hummel.

REFERENCE COLLECTION



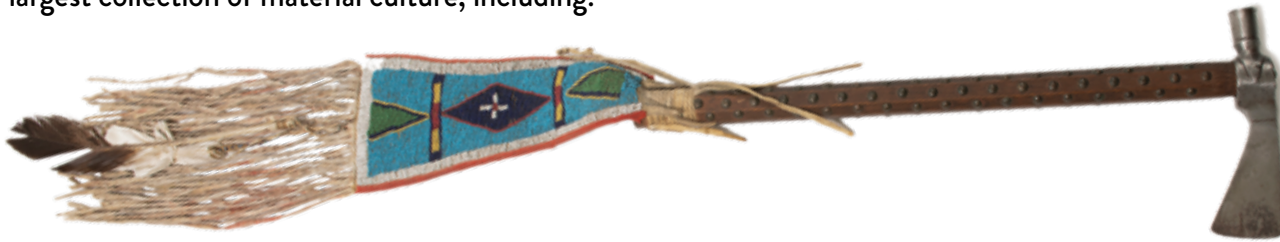
An open-stack reference collection of book and periodical titles for the study of regional, state, community, and family history.





COLLECTIONS AND CULTURAL RESOURCES

The Idaho State Museum is Idaho's official state historical museum that holds, preserves, and documents Idaho's largest collection of material culture, including:



NATIVE AMERICAN HISTORY



Native American artifacts with items like a Shoshone quilled and beaded bag, Nez Perce Chief Looking Glass's tomahawk pipe, and a traditional hand-made cradleboard.

FARMING AND AGRICULTURAL HISTORY



Artifacts documenting Idaho's agricultural industry, including a thresher used in a northern Idaho dry land farming operation, saddles from Idaho makers throughout the state, and sheep shearing equipment.

CLOTHING AND TEXTILES



Clothing and textile artifacts, including inaugural gowns of former governors' wives, over seventy-five quilts representing many eras and patterns, military uniforms from the Civil War through today, and a stage costume belonging to Paul Revere of "Paul

Revere and the Raiders" in the 1960s.

HOUSEHOLD AND HOME FURNISHINGS



Artifacts in the household and domestic collection representing all aspects of home life, including food service, preparation and processing, cleaning, furnishings and the dishware used by Governor Shoup and his wife.

SPORT AND RECREATION



Recreational artifacts, including toys, sporting and outdoor equipment, and games. Skis, polo equipment and Miss Nara, Idaho's Japanese Friendship doll are included in the collection.

TOOLS AND INDUSTRY



Pieces of tools and equipment representing many Idaho industries including a hydraulic giant from Idaho City, a hard rock drill from the Yellow Jacket Mine in Lemhi County, an iron lung used by a Boise hospital to fight polio, an autoclave used in the Japanese incarceration camp at Minidoka, and a Fresno scraper from Morrison Knudsen Company.

TRANSPORTATION



Transportation artifacts and objects used on land, air, rail, and water, including a stagecoach used to carry passengers in southwest Idaho, the "Gospel Coach" a customized mobile home used by a traveling preacher and his family, and the Leata, a gas-saving car developed in Post Falls Idaho during the 1970s.

CHINESE HISTORY



Artifacts representing Chinese immigrants that settled in Idaho, including one of the largest apothecary collections outside of China with prescriptions, recipes, objects, and ingredients from the Ah Fong family, local herb doctors from the late 1800s

through the 1960s.

WEAPONS AND MILITARY HISTORY



The artifacts in the arms and armament collection include objects from the Bronze Age to those used today for various purposes. The collection also includes medieval arms and armor, Civil War and Revolutionary War artifacts, an 1883 Gatling gun on its original carriage used on the Western frontier, 19th century pistols and rifles used in the West, and WW I and II era weapons.



EDUCATIONAL RESOURCES

NATIONAL HISTORY ACADEMY



National History Academy is an important initiative that helps students understand the foundations of American democracy and the responsibilities of citizenship through experiential learning. The Idaho State Historical Society offers scholarship

support for four Idaho students to participate in this national program annually, which is hosted in Washington DC.

G.E.M. (GUIDE, ENGAGE, MOBILIZE)



The Guide, Engage, Mobilize (GEM) High School Internship Program brings together passionate, curious, and innovative teens to make a difference in Idaho communities and get a behind the scenes look at the Idaho State Museum. Interns network with

professionals including archivists, curators, and designers as they advance important skills that will prepare them for college and career. Interns dive deeper into exciting topics and develop key skills through projects, programs, workshops, and volunteering. As a member of the museum team, students meet teens from across the Treasure Valley and work together to create exciting and educational experiences for visitors of all ages.

FIELD TRIPS



Explore historic sites like the Old Idaho Penitentiary, Rock Creek Station and Stricker Homesite, and the Franklin historic properties. Learn how Idaho's land and people shaped each other through time at the Idaho State Museum. Tour the spaces where

thousands of original documents and photographs are safely kept and learn about Abraham Lincoln's legacy in Idaho in a unique public exhibit at the Idaho State Archives.

NATIONAL HISTORY DAY IN IDAHO



National History Day in Idaho (NHD) is a year-long student-led academic program focused on historical research, interpretation, and creative expression for 4th-12th grade students across Idaho. By participating in NHD, students become writers, filmmakers, web designers, playwrights and artists as they create unique contemporary expressions of history. The experience culminates in a series of competitions at the local and state levels and an annual national contest in June.

Students who participate in NHD build skills that are key to success in college, career, and citizenship. NHD teaches critical thinking, writing, and research skills. They learn to speak publicly, collaborate with team members, communicate ideas effectively with diverse audiences, manage their time, and persevere through challenges.

RAY KNIGHT FIELD TRIP FUND



The Ray Knight Field Trip Fund helps offset admission and transportation costs to schools in Idaho, by evaluating the needs of Idaho's Title One schools.

Student admission cost for all field trips is based on the percentage of students

that qualify for free or reduced lunch. Schools that have over 40% of students that qualify for free or reduced lunch will receive \$2 off admission costs, covered by the Ray Knight Field Trip Fund. Additionally, all schools, can apply for bus funding support through the Ray Knight Field Trip Fund. Funding is awarded on a first come, first served basis and is subject to availability.

TRAVELING TRUNKS



The traveling trunk program provides an extension for the museum and its programming across Idaho, increasing access to objects, documents, photographs, and other primary sources. Thanks to the generosity of the Minidoka National Historic Site,

the Laura Moore Cunningham Foundation, and the Governor's Lewis and Clark Trail Committee, traveling trunks are currently offered free of charge to Idaho teachers.

GUIDED TOURS



Idaho State Historical Society destination sites offer guided tour programs to the public where trained guides provide additional context to further visitors' connection to Idaho's rich and diverse history.

Additional resources and public programming are built around guided tour content, like wayfinding companion books, exhibit catalogs and online exhibitions, and ISHS educational curriculum.



CAPITOL CURATION PROGRAM

The Idaho State Capitol Commission works cooperatively with the Idaho State Historical Society to support its Capitol Curation Program which manages and protects the Capitol Building's historic spaces, collections, and exhibits.



SERVICES AT THE CAPITOL

ISHS manages over 1,000 artifacts related directly to the history of the Idaho Capitol and state government. The Capitol Curator facilitates ongoing partnerships with occupants to steward the state house historic public and office spaces and a significant collection. ISHS manages artifacts that chronicle the state's story, including historic furniture that enhance the building's character, original, architectural drawings of the Capitol, and governor's portraits from the territorial and early state period.

PERMANENT EXHIBITIONS

GOVERNING IDAHO: HOW PEOPLE & POLICY SHAPE OUR STATE



The Capitol's signature exhibition orients visitors within the building and introduces the essential workings of state government. From current leadership to Idaho's relationship with tribal and federal governments, this award-winning exhibit serves as an interpretive foundation for the Statehouse.

THE LINCOLN AUDITORIUM



The Lincoln Auditorium is a functional space that features artifacts and ephemera connected to President Abraham Lincoln. In partnership with the Legislative Services Office, exhibitions at the entrance and back of the auditorium honor the legacy of our 14th president

and his connection to Idaho.

HOUSE HISTORIC EXHIBITS: HISTORIC OFFICE OF THE IDAHO STATE TREASURER



At the invitation of the Idaho State House of Representatives, the ISHS crafted permanent and special exhibition spaces in the former Idaho State Treasurer's suite. The rooms invite visitors to explore key functions of state government and provide enduring access

to the Capitol's original architectural elements.

LEGISLATIVE COMPOSITES



The Capitol Curation Program partners with the Idaho State Archives to steward Legislative Composites. These biennial photographs of House and Senate membership serve as a record of citizen legislators and framed

reproductions enhance Statehouse corridors and legislative lounges. While the oldest composites are no longer physically accessible to statehouse visitors outside of Legislative Session, the digital catalog of the Idaho State Archives allows users to get even closer to those who served.

ARCHIVAL IMAGES FOR COMMITTEE & HEARING ROOMS



During the 2007-2010 restoration of the Idaho State Capitol, the Idaho State Historical Society curated historic images from the Idaho State Archives for committee hearing rooms throughout the building. From industries key to Idaho's past to the

infrastructure projects that shaped the Gem State, these images illuminate the work of legislative committees and inspire and engage legislators and visitors to the People's House.

STEWARDED IDAHO'S TREASURES



As part of its collections portfolio, the Capitol Curation Program stewards over twenty internationally significant works of art, memorials, and statuary within the statehouse and its grounds. From Charles Ostner's gilded carving of President George Washington to

the Space Shuttle Memorial funded by Idaho Boy Scouts, these pieces connect us to a national narrative and reflect deeply held Idaho values.



IDAHO STATE
**HISTORICAL
SOCIETY**

THE IDAHO STATE HISTORICAL SOCIETY MEMBERSHIP PROGRAM

Idaho State Historical Society (ISHS) members are living the history that is preserved through the work of the Historical Society – now and for the future. The ISHS membership drives educational programs for students, families, adults, exhibits, scholarships for under-resourced students, and conservation of historic artifacts. Membership support can be seen in classrooms and communities across the state. We continue to provide access to dynamic and engaging historical content, educational resources, and meaningful Idaho stories. Through statewide and nationwide partnerships like Time Travelers and the Idaho History Reciprocal Membership Program, the ISHS creates even more opportunities for people to engage and interact with history.

The Idaho History Reciprocal Membership Program is a collaboration between the Idaho State Historical Society and participating museums and historic sites across Idaho, which provides free admission to participating museums with any membership, including additional discounts and perks. Time Travelers is a network of hundreds of historical museums and sites across the country that provides reciprocal access to participating organizations.

THE IDAHO STATE HISTORICAL SOCIETY IMPACT

- Curatorial services preserve and protect the state's irreplaceable legacy collections
- Public access to Idaho's historical resources provides information critical to decision making
- Programs of the State Historic Preservation Office give an Idaho voice to federal decision making
- Dynamic educational services advance historical and civic literacy, build 21st century skills, and directly support Idaho school curriculum
- Preservation of statewide historic sites reveal a sense of place critical to personal and community identity
- Government records management services are essential to state agencies and official jurisdictions



Scan this code or visit HISTORY.IDAHO.GOV to subscribe to the Idaho State Historical Society's monthly electronic newsletter and receive event and program updates.

